



PIV Prüfinstitut Schlösser und Beschläge Velbert
 Wallstraße 41 – D 42551 Velbert
 Director of Institute: Andrea Horsthemke (B.Eng.)
 Tel 0049-(0)2051-9506 5
 Fax 0049-(0)2051-9506 69
 eMail: info@piv-velbert.de



1309

Certificate of Constancy of Performance

1309 - CPR - 0018

(Version: 03)

In accordance with the EU Regulation No 305/2011 of the European Parliament and of the Council from 09. March 2011 (Construction Products Regulation or CPR) this certificate shall apply to the construction product

3D - Door hinge

Item numbers see product matrix

Design type: 2-part

placed on the market under the name or the trade name of

Wilh. Schlechtendahl & Söhne GmbH & Co. KG

Hauptstraße 18 – 32
 D-42579 Heiligenhaus

and produced in the manufacturing facility

D-42579 Heiligenhaus
 Hauptstraße 18 – 32

This certificate attests that all provisions of the assessment and verification of constancy of the performance according to the description in annex ZA of the standard

EN 1935:2002/AC:2003

within the scope of the system 1 for the performance according to the information given in this certificate, and that

the performance of the construction product is consistently rated as resistant.

Product classification key

4	7	6	0	1	3	1	13
- Suitability for use on doors in escape routes							

This certificate was initially created on the **23. May 2006** and shall remain valid until either the harmonized standard of the construction product, the system of assessment and verification of constancy of performance or the production conditions at the plant are changed, or suspended until the certificate of the notified certification body is suspended or revoked.

Stamp Notified body

D-Velbert, 21. February 2019

This certificate has a total of 3 pages and replaces the certificate no. 1309-CPR-0018, version 02 from 08. April 2016



Horsthemke

Andrea Horsthemke (B.Eng.)
 Manager of the Notified body



PIV Prüfinstitut Schlösser und Beschläge Velbert
 Wallstraße 41 – D 42551 Velbert
 Director of Institute: Andrea Horsthemke (B.Eng.)
 Tel 0049-(0)2051-9506 5
 Fax 0049-(0)2051-9506 69
 eMail: info@piv-velbert.de



1309

Annex for the Certificate of Constancy of Performance

1309 - CPR - 0018

(Version: 03)

Essential features	Sections of this European standard	Mandated levels and/or classes	Notes
self-closing initial measurements of the frictional torque Load-deformation Lateral / vertical displacement under load Lateral / vertical displacement after the unloading Overload Shear strength Suitability for fire and/or smoke protection doors	5.1 5.2.1 5.2.2 5.3 5.6	none	$\leq 4 \text{ Nm}$ (Class 13) laterally < 2 mm vertical < 4 mm is within the gridded area in Figure G.1 passed NPD NPD
Lasting functionality Continuous operation test Lateral / vertical wear Max. permissible friction torque - after 20 cycles - after the end of the test Corrosion resistance	5.4 5.5		Class 7 / 200,000 cycles is within the gridded area in picture G.2 $\leq 4 \text{ Nm}$ (Class 13) $\leq 4 \text{ Nm}$ (Class 13) Class 3 according to EN 1670
Dangerous substances	ZA.1		The manufacturer declares that the product contains no hazardous substances or release them beyond the maximum levels specified in European standards and national regulations.



Horsthemke

Andrea Horsthemke (B.Eng.)
 Manager of the Notified body



PIV Prüfinstitut Schlösser und Beschläge Velbert
 Wallstraße 41 – D 42551 Velbert
 Director of Institute: Andrea Horsthemke (B.Eng.)
 Tel 0049-(0)2051-9506 5
 Fax 0049-(0)2051-9506 69
 eMail: info@piv-velbert.de



1309

Annex for the Certificate of Constancy of Performance

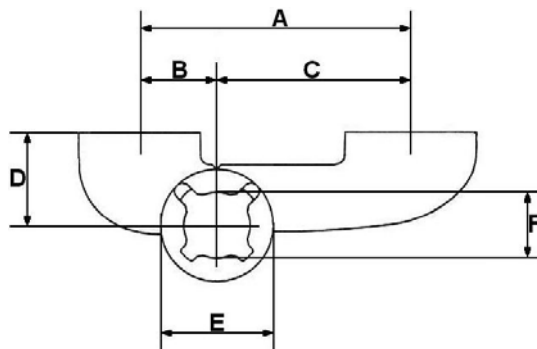
1309 - CPR - 0018

(Version: 03)

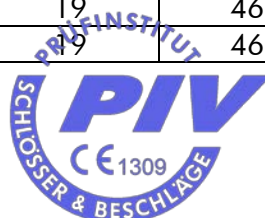
Product matrix

Product definition:

3D-Door hinge, 2-part



Item nos.	A [mm]	B [mm]	C [mm]	D [mm]	E [mm]	F [mm]
04.070.2315.	105	46	59	23	32,2	10
04.070.2365.	65	19	46	23	32,2	10
04.070.2378.	78	19	59	23	32,2	10
04.070.2392.	92	46	46	23	32,2	10
04.070.3665.	65	19	46	36	32,2	10
04.070.3678.	78	19	59	36	32,2	10
04.074.2365.	65	19	46	23	32,2	10
04.074.2378.	78	19	59	23	32,2	10
04.080.3669.	69	23	46	36	32,2	10
04.080.3682.	82	36	46	36	32,2	10
04.030.2365.	65	19	46	23	32,2	10
04.030.2378	78	19	59	23	32,2	10
04.030.2392.	92	46	46	23	32,2	10
04.030.2315.	105	46	59	23	32,2	10
04.036.2365.	65	19	46	23	32,2	10
04.036.2378.	78	19	59	23	32,2	10
118622	65	19	46	23	32,2	10
118638	65	19	46	23	32,2	10
118627	92	46	46	23	32,2	10
118642	92	46	46	23	32,2	10
118576	65	19	46	23/36	32,2	10
118630	65	19	46	23/36	32,2	10



Horsthemke
 Andrea Horsthemke (B.Eng.)
 Manager of the Notified body