




®

PD 79 and PD 99 panic push bar in accordance with DIN EN 1125, can be shortened or in a fixed length

**Assembly and maintenance instructions**

## Table of contents

Description.....	Page 3
Areas of application .....	Page 3
Description of parts .....	Page 3
Attaching the fastening axle FA.....	Page 3
Profile machining according to drilling diagram .....	Page 3
Assembly steps for push bar that can be shortened.....	Page 4
Shortening the bar.....	Page
Assembly of the fastening plate.....	Page 4
Assembly of the basic bar, single-leaf.....	Page 5
Screw the fittings tight, active leaf .....	Page 5
Fixing the square, active leaf .....	Page 5
Performance check, active leaf.....	Page 6
Performance check, fixed leaf.....	Page 6
Drill.....	Page 6
Pinning .....	Page 6
Suspending the cover bars.....	Page 7
Suspending the push bar .....	Page 7
Assembly steps for fixed length .....	Page 8
Screw the panic push bar into place .....	Page 8
Insert square.....	Page 8
Screw tight: push bar and square.....	Page 8
Performance check .....	Page 9
Drill.....	Page 9
Pinning to the fittings safety device.....	Page 9
Completing the assembly: push bar that can be shortened and fixed length	
Page 10	
Adjusting the latch protrusion .....	Page
Installing the fastening clip.....	Page 10
Mount cover cap .....	Page 10
Performance check .....	Page 10
The DIN direction only has to be changed for the PD 79.....	Page 11
 Important notes and safety measures.....	Page 11
 Maintenance recommendation .....	Page 12
Related locks and fittings PD 79 .....	Page 12
Related locks and fittings PD 99 .....	Page 12
 Documentation .....	Page 13

## Description

### PD 79 panic push bar for single and double-leaf doors in accordance with DIN EN 1125

Item no. 01.690/691.----- (active leaf),  
Item no. 01.692/693.----- (fixed leaf)

### PD 99 panic push bar for single and double-leaf doors in accordance with DIN EN 1125

Item no. 14.484 ----- (active leaf),  
Item no. 14.492 ----- (fixed leaf)



**Attention!** The products described in this document must only be used with the tested lock types listed in the certificates! See page 12.



**This product serves to protect human life.**

The safety features of this product are essential for compliance with DIN EN 1125. With the exception of the changes laid out in these instructions, no further changes are permitted.

The main purpose of this product is to save human lives in the event of panic situations. Its most important feature is making it possible to open the door by applying only minimal pressure with the hand or body, even if, for example, darkness and smoke cause a crowd of people to panic and to put pressure on the door.

To ensure constant ease of operation, it is imperative that these assembly instructions are strictly followed, and that the fittings are assembled and installed diligently and carefully by sufficiently qualified technical personnel. After the assembly and function test, the installer must hand these instructions over to the user and/or operator.

## Areas of application

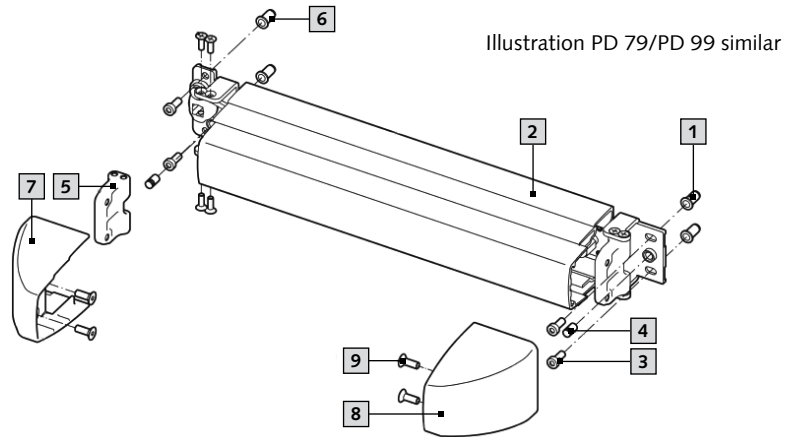
All information on the temperature range and door features can be found in the current certificates for locks, multi-point locks and accessories:

WSS: 1309-CPR-304

Fuhr: 1309-CPR-422

## Description of parts

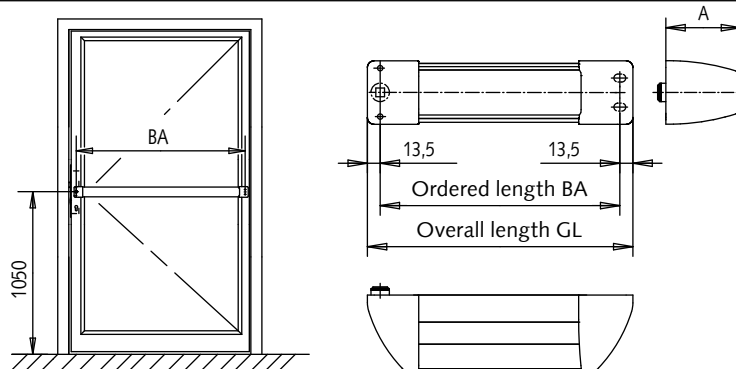
- 1 Nut rivet with flat head (4x)
- 2 Panic push bar
- 3 Socket-head cap screw DIN 7984 M5x14 (4x)
- 4 Dowel pin D6x13 (2x)
- 5 Fastening clip (2x)  
Pay attention to the position of the fastening clip – see also illustration N
- 6 Countersunk screw DIN 965, M4x12 (8x)
- 7 Cover cap, lock side (1x)
- 8 Cover cap hinge side (1x)
- 9 Countersunk screw DIN 7991 M5x14 (4x)



## Attaching the fastening axle FA

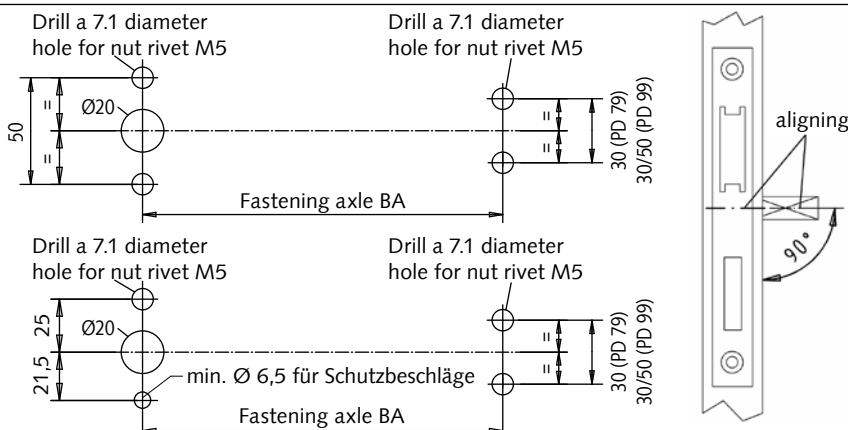
**A**

The assembly steps found on the following pages refer to the active leaf. The assembly steps for the fixed leaf are the same.



## Profile machining according to drilling diagram

**B**



## Assembly steps for push bar that can be shortened

### Shortening the bar

**C** only push bar that can be shortened

Dimension  $X = BA \text{ max.} - BA$

Example  $BA = 1,150 \text{ mm}$   
 $BA \text{ max.} = 1,250 \text{ mm}$   
 $X = 1,250 \text{ mm} - 1,150 \text{ mm}$   
 $X = 100 \text{ mm}$

**!** Profiles can only be shortened individually and only on the hinge side!

**!** Deburr all sawn edges!

Pay attention to the saw side!  
 max. 150mm

Only fit parts with the same serial number!  
 XXX/X/XX  
 YYYYY

**!** **Attention!** Due to their swivel angle in the curved cover cap, all profiles (1, 2, 3 and 4) have different length dimensions when delivered and must therefore all be shortened individually (dick) by the same dimension X to obtain the desired BA dimension. Simultaneous sawing of all profiles in assembled and folded condition is therefore not possible and is not permitted!

1. Basic profile
2. Pressure bar profile
3. Coverage profile (top)
4. Coverage profile (bottom)

### Assembly of the fastening plate

**D** only push bar that can be shortened

Screw into 5 flush.

SW2.5

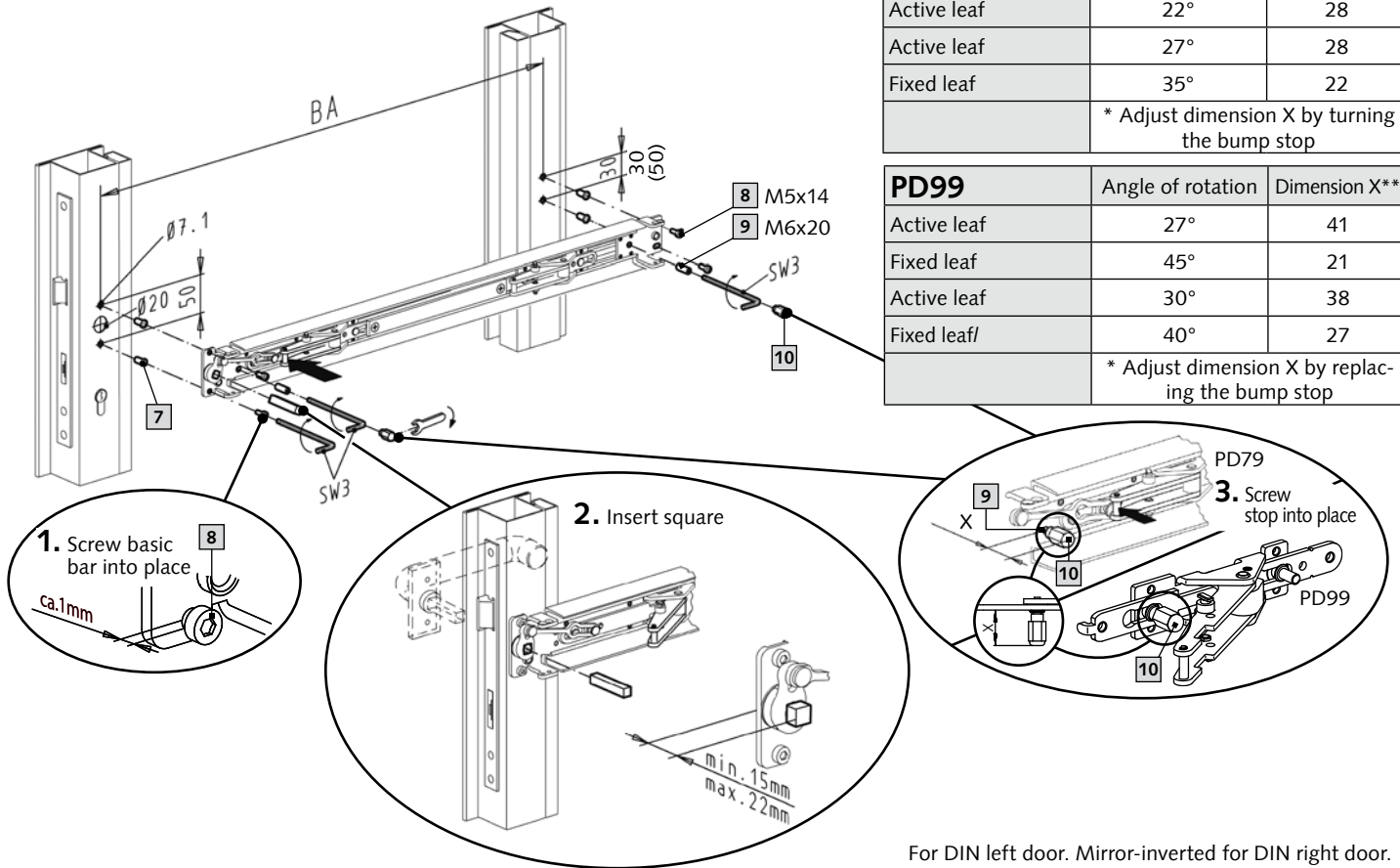
7.5-8.5mm

## Assembly of the basic bar, single-leaf

**E** only push bar that can be shortened

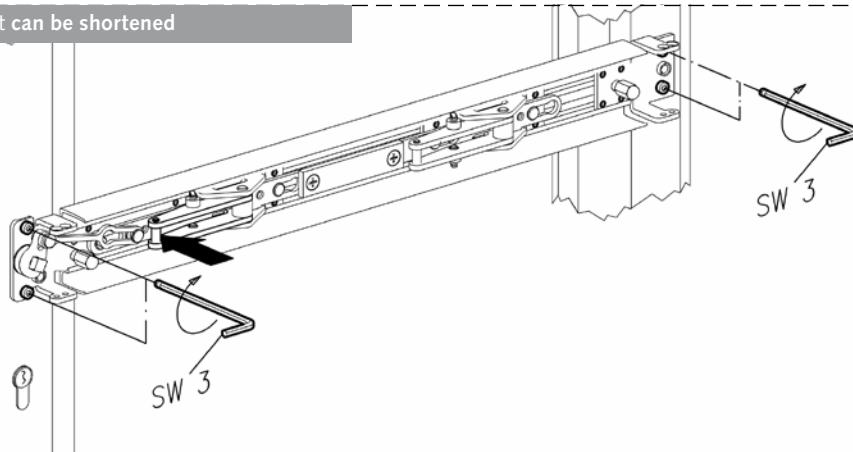
PD79	Angle of rotation	Dimension X*
Active leaf	22°	28
Active leaf	27°	28
Fixed leaf	35°	22
* Adjust dimension X by turning the bump stop		

PD99	Angle of rotation	Dimension X**
Active leaf	27°	41
Fixed leaf	45°	21
Active leaf	30°	38
Fixed leaf/	40°	27
* Adjust dimension X by replacing the bump stop		



## Screw the fittings tight, active leaf

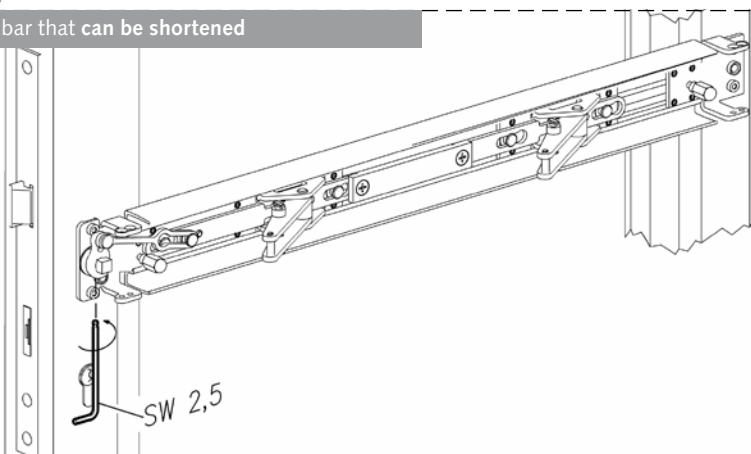
**F** only push bar that can be shortened



Mirror-inverted installation on fixed leaf.  
Illustration PD 79/PD 99 similar

## Fixing the square, active leaf

**G** only push bar that can be shortened



Mirror-inverted installation on fixed leaf.  
Illustration PD 79/PD 99 similar

### Performance check, active leaf

**H<sub>1</sub>** only push bar that can be shortened

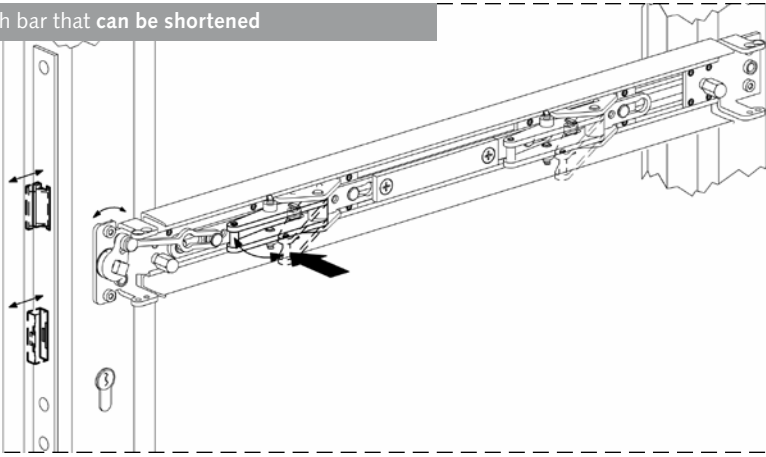


Illustration PD 79/PD 99 similar

### Performance check, fixed leaf

**H<sub>2</sub>** only push bar that can be shortened

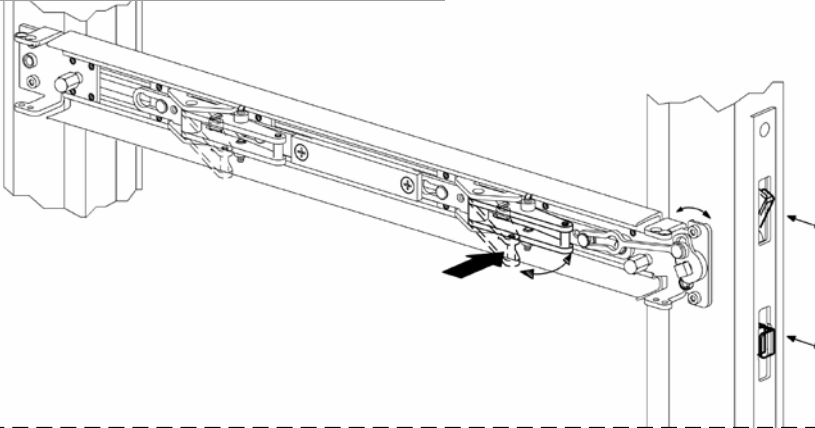


Illustration PD 79/PD 99 similar

### Drill

**I** only push bar that can be shortened

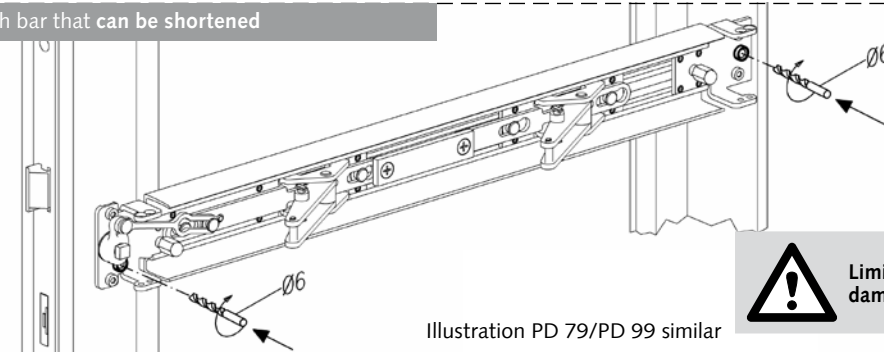
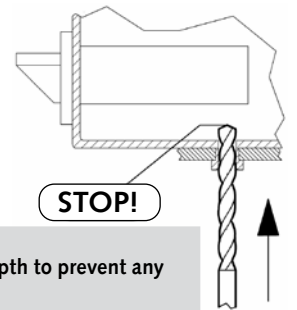


Illustration PD 79/PD 99 similar



Limit the drilling depth to prevent any damage to the lock.

### Pinning

**J** only push bar that can be shortened

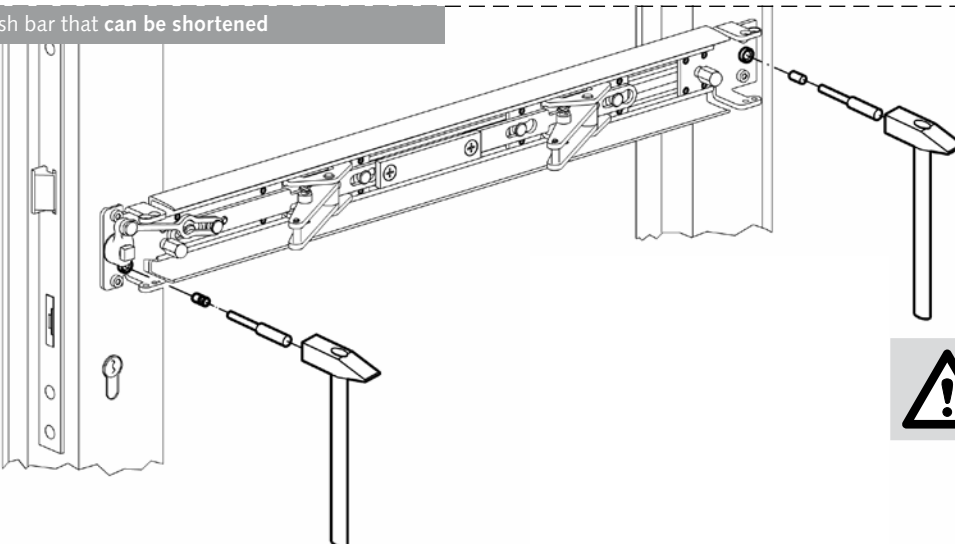
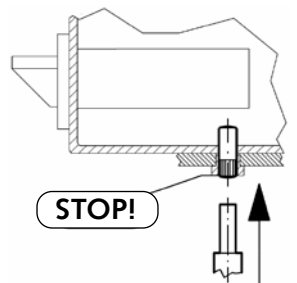


Illustration PD 79/PD 99 similar



Do not knock the knurled head right through.

### Suspending the cover bars

**K** only push bar that can be shortened

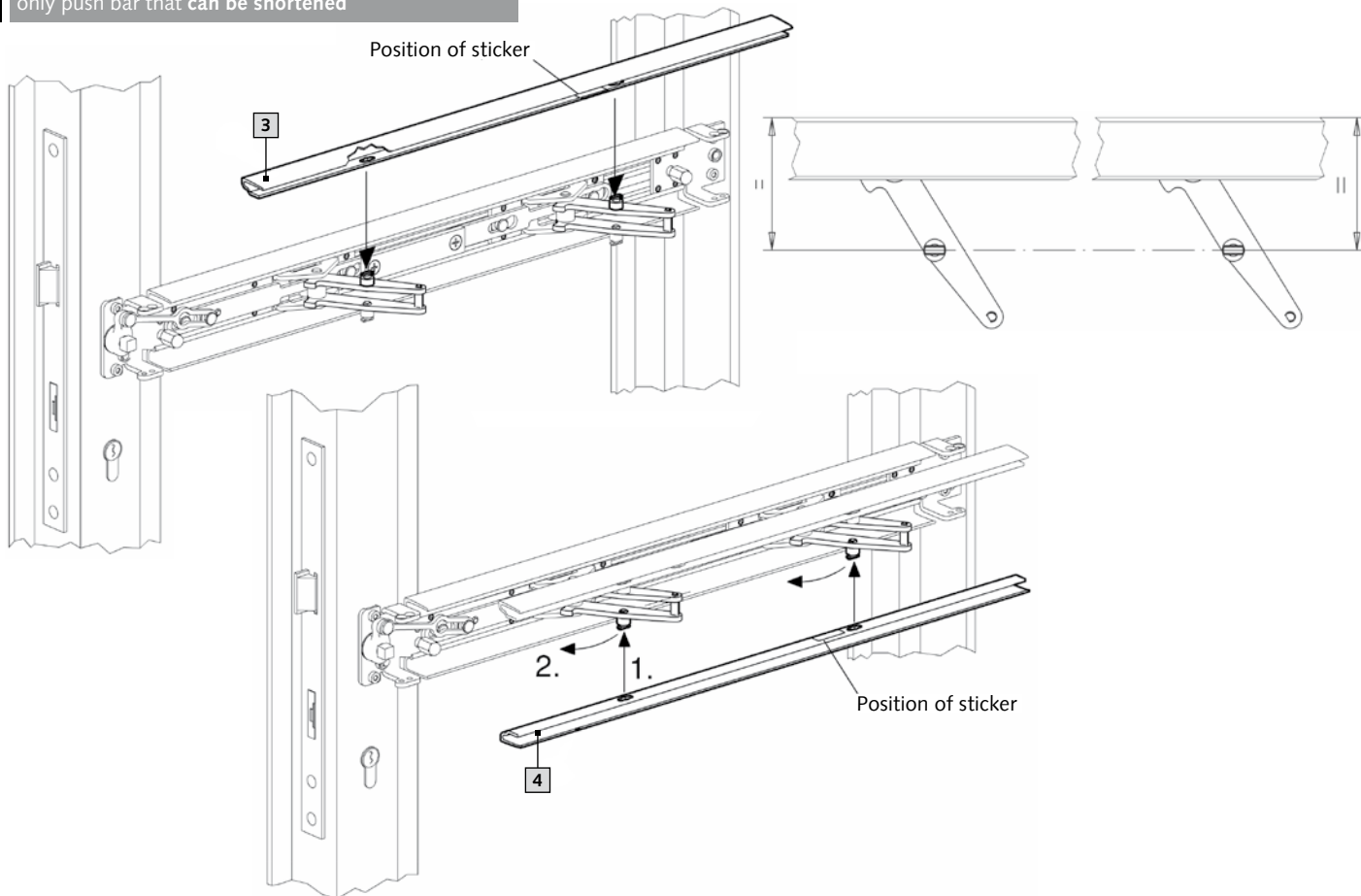


Illustration PD 79/PD 99 similar

### Suspending the push bar

**L** only push bar that can be shortened

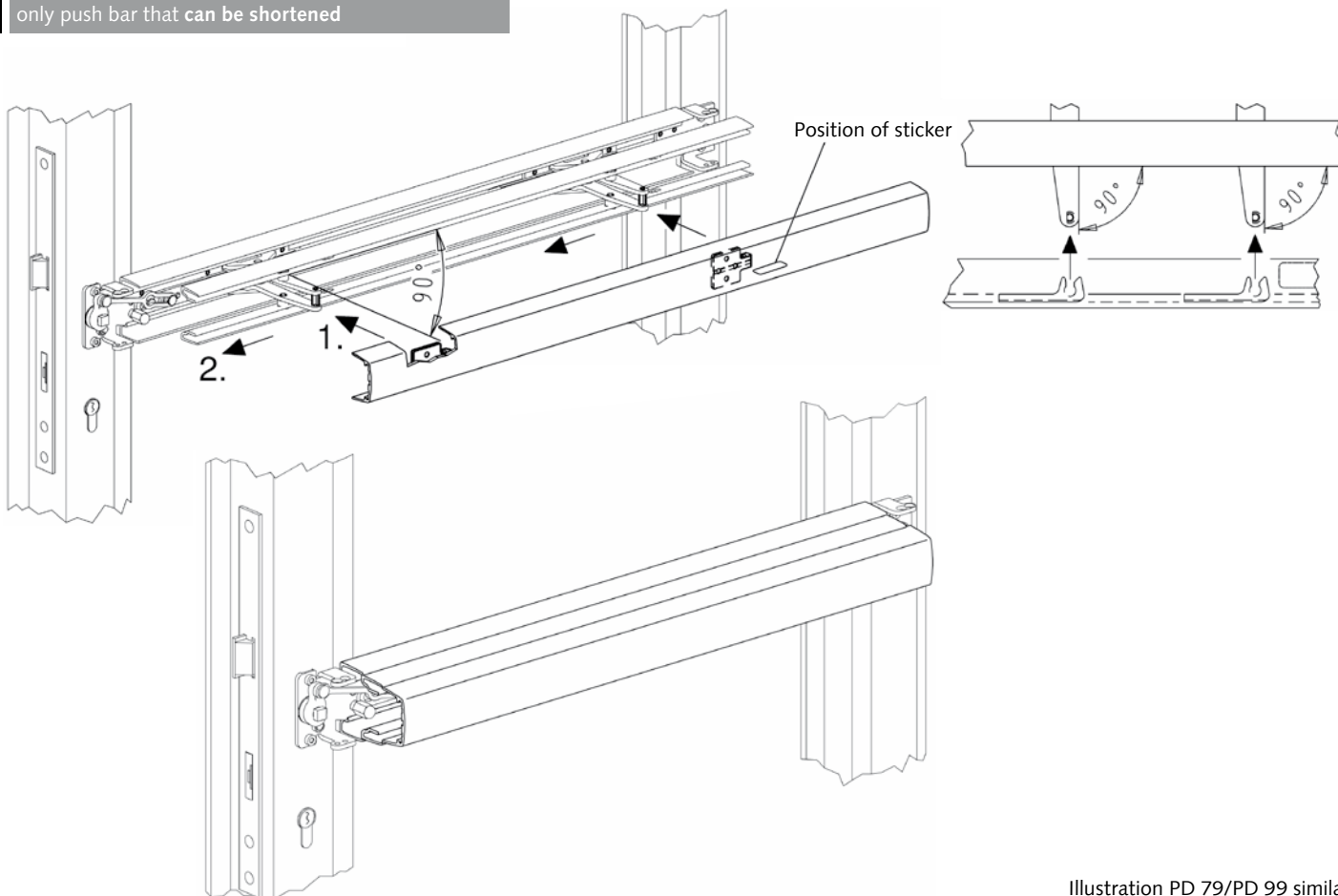
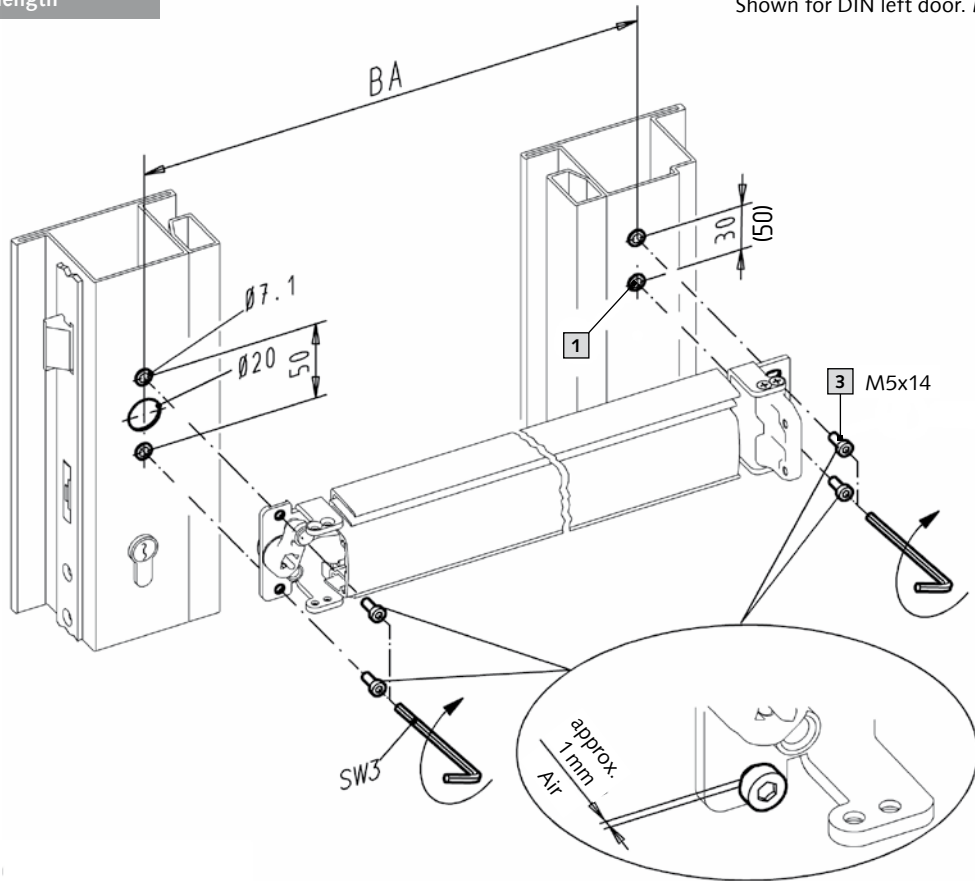


Illustration PD 79/PD 99 similar

## Assembly steps for fixed length

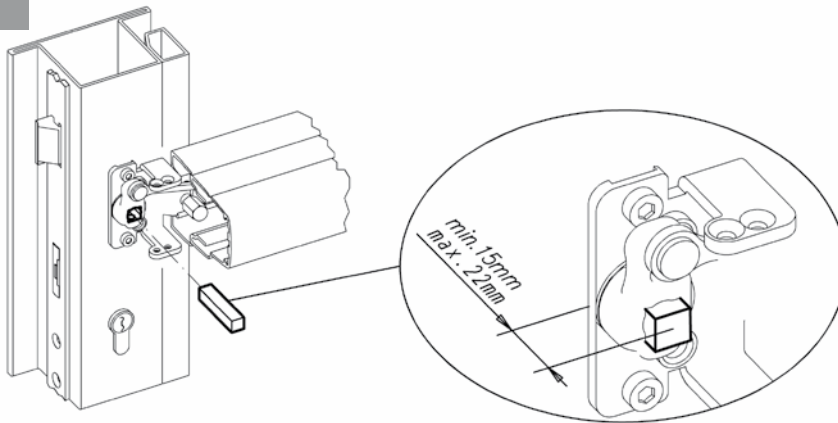
### Screw the panic push bar into place

**C** only fixed length



### Insert square

**D** only fixed length



### Screw tight: push bar and square

**E** only fixed length

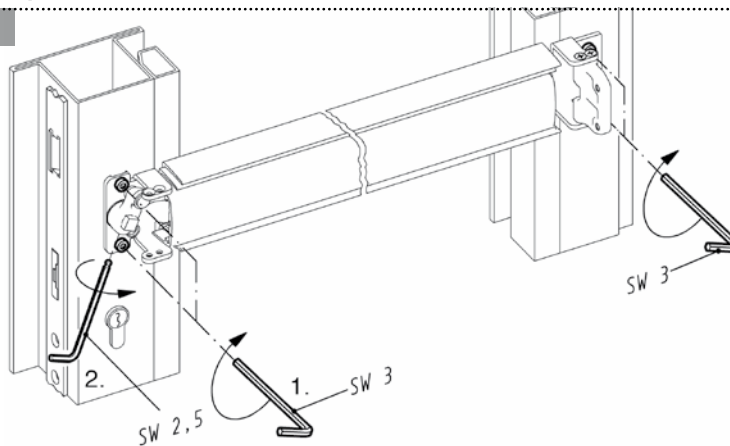


Illustration PD 79/PD 99 similar



### Performance check

**F** only fixed length

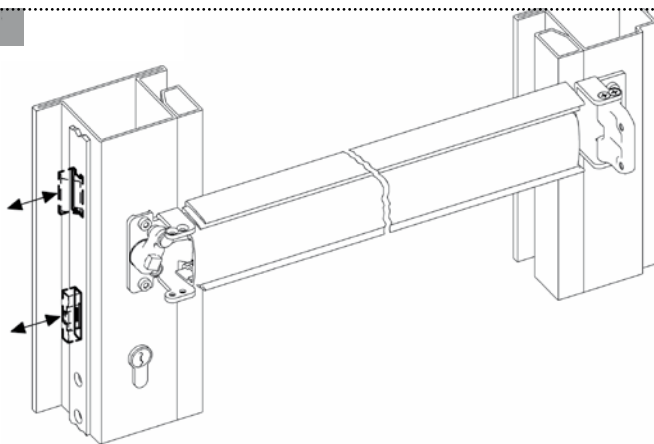
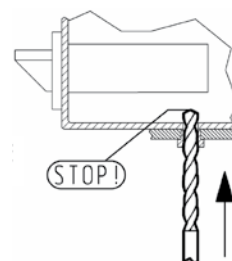
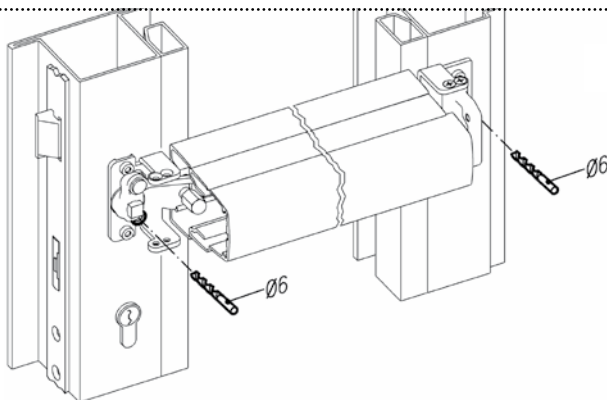


Illustration PD 79/PD 99 similar

### Drill

**G** only fixed length

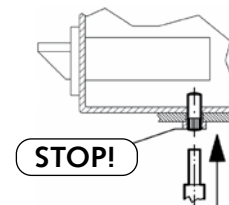
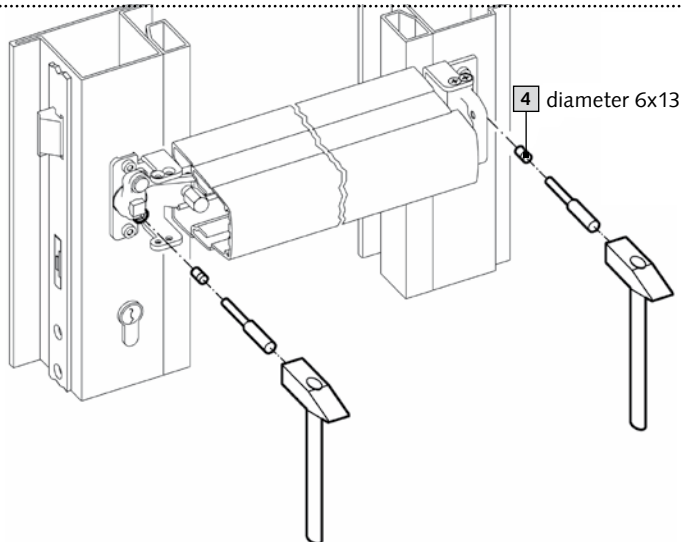


Limit the drilling depth to prevent any damage to the lock.

Illustration PD 79/PD 99 similar

### Pinning to the fittings safety device

**H** only fixed length



Do not knock the knurled head right through.

Illustration PD 79/PD 99 similar

## Completing the assembly: push bar that can be shortened and fixed length

### Adjusting the latch protrusion

**M**

PD79	Angle of rotation	Dimension X*
Active leaf	22°	28
Active leaf	27°	28
Fixed leaf	35°	22
* Adjust dimension X by turning the bump stop		

PD99	Angle of rotation	Dimension X**
Active leaf	27°	41
Fixed leaf	45°	21
Active leaf	30°	38
Fixed leaf/	40°	27
* Adjust dimension X by replacing the bump stop		

Illustration PD 79/PD 99 similar

### Installing the fastening clip

**N**

Illustration PD 79/PD 99 similar

### Mount cover cap

**O**

7 Cover cap\* Lock side  
 8 Cover cap\* Hinge side

\*standard cover cap for lock and hinge side for the PD 99

Illustration for PD 79/PD 99 similar

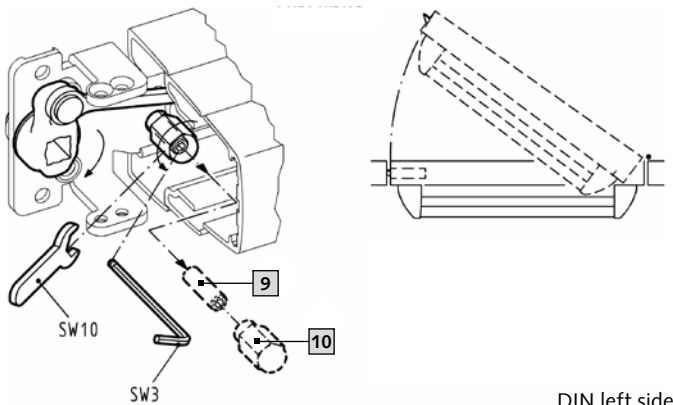
### Performance check

**P**

Illustration PD 79/PD 99 similar

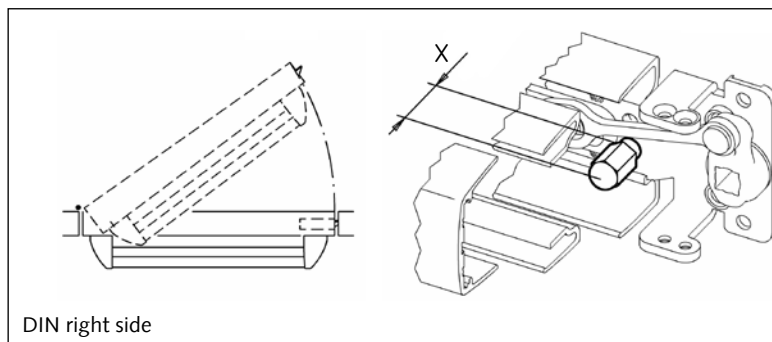
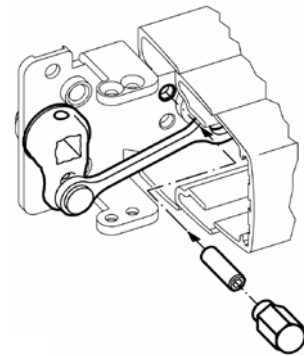
## The DIN direction only has to be changed for the PD 79

Unscrew the stop Pos.10 and threaded pin Pos. 9 and swivel the lever arm around 180°!



DIN left side

1. Press the push bar slightly and screw the threaded pin in up to the end
2. Screw stop in!



DIN right side


PD79	Angle of rotation	Dimension X*
Active leaf	22°	28
Active leaf	27°	28
Fixed leaf	35°	22
* Adjust dimension X by turning the bump stop		



### Important notes and safety measures

- The aforementioned WSS products according to DIN EN 1125 ensure very high quality and safety standards. In order to maintain this high standard, the doors must be in perfect condition both during and after assembly. The door must be checked to make sure it opens correctly, easily and is unobstructed. It should display no signs of warping.
- Before the emergency exit/panic lock is installed in a fire or smoke protection door, it should be checked that the emergency exit lock is suitable and authorised to be used for that particular door (see attachment B, DIN EN 1125).
- When putting on file and door seals, it must be ensured that these do not impair the proper operation of the door and/or the functioning of the emergency exit/panic lock.
- On double leaf doors with rebated half overlay, on which both leaves are equipped with emergency exit/panic locks, each door must open when its lock is activated. It must be ensured that the door leaves and fittings are free of tension. If necessary, a pushing flap is to be used.
- For panic locks in accordance with DIN EN 1125, it must be ensured that the correct length is mounted. The most effective possible rod length is to be chosen; at least 60% of the door's width must still be free.
- Doors with glazed panels which are equipped with an emergency exit/panic lock should be equipped with safety glazing (safety glass or laminated safety glass).
- When mounting an emergency lock on different types of doors, different mounting parts are required, which differ from those included in the items supplied. In this case, the installer should choose a durable, solid fastening in accordance with requirements, or should consult WSS.
- Emergency locks are not suitable for use on swing doors, unless they were manufactured specifically for that purpose.
- The handle or the panic push bar/panic pressure bar should normally be installed at a height of between 900 mm and 1,100 mm above finished floor level. If it is known that the majority of users will be small children, a reduction in the height of the handle should be considered.
- The latch, bolt and locking bars should be installed and secured in such a way that safe action is guaranteed. It should be ensured that, when in the closed position, the overhang does not prevent the door from moving

freely.

- If the emergency exit/panic locks to be mounted onto double leaf doors have been provided with rebated half-overlay and door closers, a door selector in accordance with DIN EN 1158 with pushing flap should be installed, or a latch sequence control integrated into the locking system, in order to ensure the correct closing sequence. This recommendation is particularly important for fire and smoke protection doors.
- If a door closer is installed, it must be ensured that this does not unnecessarily make activating the door harder for children, handicapped persons and elderly persons.
- Any provided floor locking troughs, striking plates and/or locking troughs should be installed according to the instructions, so that they conform with the certified standard. Deviations due to different door profiles determined by the system are only allowed in consultation with WSS.
-  On panic doors according to DIN EN 1125, there should be a sign on the inner side of the door, directly above the horizontal activation bar or on the activation bar itself, which says 'Push' or 'Push bar to open', or there should be a pictogram demonstrating this. The colour should be white on a green background, similar to the pictogram Picture A1 in the DIN EN 1125 (point A.19).
- The panic function is only guaranteed when the key is pulled out.
- Knob and electronic cylinders that can be used as well as suitable and approved e-openers are listed in the latest certificate at: [www.wss.de/service/download/zertifikate.html](http://www.wss.de/service/download/zertifikate.html)

### Maintenance recommendation

The following ongoing maintenance is to be carried out by the operator or by a third party commissioned by the operator, at intervals of no more than a month:

- Inspection and activation of the emergency lock, in order to make sure that every part of the lock is in perfect condition.
- Additionally, a force measurement is to be taken at least once a year. With a dynamometer (pressure box etc.), the actuating force required to activate the emergency escape door lock is to be measured and recorded.
- It must be checked and/or ensured, that the latch, bolt and locking bars are not blocked.
- It is to be checked that the door/s is/are easy to open and is/are unobstructed, and there must not be any signs of warping.
- It must be ensured that all screws are firmly tightened, and that all parts of the emergency exit/panic lock are mounted properly.
- Using these instructions, the fittings components must be checked for completeness.
- It must be checked that no additional locking devices were attached after assembly, as this could lead to an impairment of the panic function (e.g. kicking the door holder...).
- Make sure that all locking pieces are completely enclosed, and that the contact areas of the latch on the striking plate and the locking bar in the locking components are well oiled.

### Related locks and fittings PD 79

The panic push bar must only be installed as an entire panic door latch in connection with the following WSS products.

	Tubular frame	Full blade screw
<b>Single leaf</b>	<b>Panic exit devices</b> Item no.: 01.112.xx 01.113.xx 01.114.xx 01.115.xx 01.116.xx 01.117.xx 01.132.xx* 01.133.xx* 01.134.xx* 01.135.xx*	<b>Panic exit devices</b> Item no.: 01.508.6500.426 01.509.6500.426 01.510.6500.426 01.511.6500.426 01.512.6500.426 01.513.6500.426
<b>Double leaf</b>	<b>Panic exit devices</b> Item no.: 01.118.xx 01.119.xx 01.120.xx 01.121.xx 01.122.xx 01.123.xx 01.136.xx* 01.137.xx* 01.138.xx* 01.139.xx*	<b>Panic exit devices</b> Item no.: 01.516.6500.426 01.517.6500.426 01.518.6500.426 01.519.6500.426 01.520.6500.426 01.521.6500.426
<b>Fixed leaf</b>	<b>Panic strike box*:</b> Item no.: 01.144.xx 01.141.xx <b>Panic strike box with e-opener 5000 8303, 5000 8304*:</b> Item no.: 01.146.xx 01.147.xx	<b>Panic strike box*:</b> Item no.: 01.536.6500.426 <b>Switching lock:</b> Item no.: 01.141.0000.010 01.141.0512.010

\*Locking bar with accessories and striking plate, according to enclosed requirements.

The aforementioned items each have their own respective assembly and operating instructions, which are to be followed.

**Installing additional or other fastenings, not included in the items listed above and/or not within the DIN EN 1125 standard, is forbidden, unless express permission from the responsible licensing agency has been obtained.**

This does not apply to the installation of door closers.

### Related locks and fittings PD 99

The panic push bar must only be installed as an entire panic door latch in connection with the following products.

	WSS	
	Series 200 self-locking panic locks	Series 200 panic locks
<b>Single leaf</b>	Item no.: 14.250.xx 14.252.xx 14.260.xx 14.262.xx 14.270.xx 14.272.xx	Item no.: 14.160.xx 14.162.xx 14.164.xx 14.172.xx 14.174.xx 14.176.xx
<b>Double leaf</b>	Item no.: 14.254.xx 14.256.xx 14.264.xx 14.266.xx 14.274.xx 14.276.xx	Item no.: 14.166.xx 14.168.xx 14.170.xx 14.178.xx 14.180.xx 14.182.xx
<b>Fixed leaf</b>	<b>Panic strike box*:</b> Item no.: 14.280.xx, 14.284.xx, 14.285.xx <b>Switching lock:</b> Item no.: 14.288.xx	

\*Locking bar with accessories and striking plate, according to enclosed requirements.

	Fuhr
<b>Single leaf</b>	Multi-point locks, anti-panic counter boxes and accessories according to 1309-CPR-422
<b>Double leaf</b>	
<b>Fixed leaf</b>	

The aforementioned items each have their own respective assembly and operating instructions, which are to be followed.

**Installing additional or other fastenings, not included in the items listed above and/or not within the DIN EN 1125 standard, is forbidden, unless express permission from the responsible licensing agency has been obtained.** This does not apply to the installation of door closers.



## Documentation

### Handover report of the function check for the initial commissioning

Door number	Tester	Date	Signature

### Documentation of maintenance

	Door number	Tester	Date	Signature
1				
2				
3				
4				
5				
6				
7				
8				
9				
10				
11				
12				
13				
14				
15				
16				
17				







**Wilh. Schlechtendahl & Söhne**  
GmbH & Co. KG

Hauptstraße 18–32  
42579 Heiligenhaus  
Germany

Tel: +49 (0) 20 56 / 17-0  
Fax: +49 (0) 20 56 / 51 42

wss@wss.de  
www.wss.de