

Special-purpose Vehicle Construction

Door-hinges

Door lockings

Accessories



Table of Contents

General Information Page 3

Door-hinges..... Page 4

Door lockings Page 8

Accessories Page 10



Our quality is your competitive advantage!

As one of the leading manufacturers of locks and fittings, WSS has set standards for highest quality and innovations for decades.

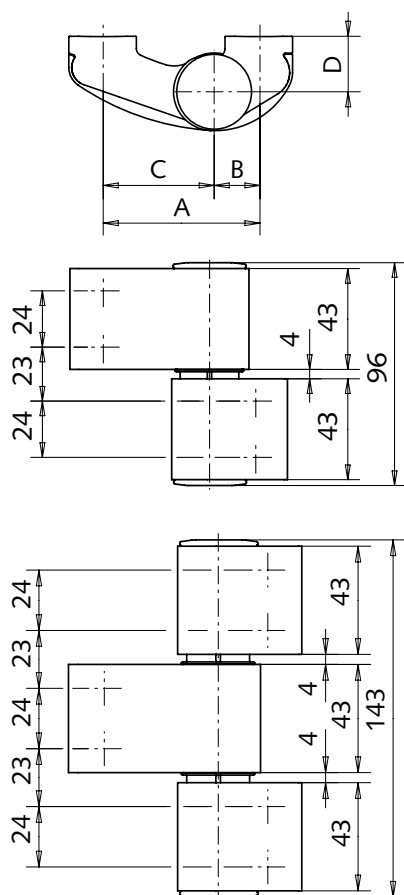
High-quality materials, precise manufacture and constant quality control ensure that you are using durable, safe and perfect products.

High and frequently stress are the normal case especially in the vehicle construction, particularly for emergency vehicles. In order to ensure the compliance with these requirements, we have one of the largest European test stands – construction and production are certified according to DIN EN ISO 9001:2008.

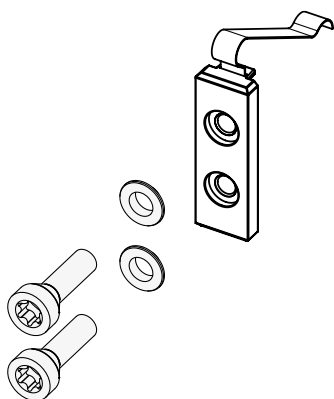
Quality, innovation and experience: Discover in WSS the reliable partner for your business success.







A	B	C	D
65	19	46	23
78	19	59	23
92	46	46	23
105	46	59	23
65	19	46	36
78	19	59	36



Aluminium Door Hinge 3D-PLUS



- Stepless adjustable in 3 dimensions
- Tested according to DIN EN 1935, class 13/14
- Sash weight max. 180 kg
- Suitable for left or right hand installation
- Screwable/maintenance free

Art.-N°	Type	Center of rotation	Axis-center distance
04.070.2365.---	2-parted	23	65
04.070.2378.---	2-parted	23	78
04.070.2392.---	2-parted	23	92
04.070.2315.---	2-parted	23	105
04.070.3665.---	2-parted	36	65
04.070.3678.---	2-parted	36	78
04.072.2365.---	3-parted	23	65
04.072.2378.---	3-parted	23	78
04.072.2392.---	3-parted	23	92
04.072.2315.---	3-parted	23	105
04.072.3665.---	3-parted	36	65
04.072.3678.---	3-parted	36	78

Indication:

Packing unit = 2 pieces

Surface Key	Material/Surface
---.114	Al, E6/C-0 anodized
---.154	Al, E6/C-34 anodized
---.198	Al, Stainless Steel finish
---.255	Al, RAL 9016 powder-coated
---.299	Al, special surface

Fixation-set with Counter Plates

For 2-parted hinges, consisting of:

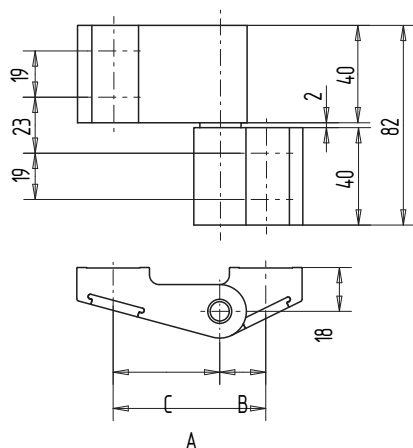
- 2x counter plate 20 mm width, 4x countersunk screw, 4x guide bushing

Art.-N°	Material/Finish
04.097.0000.010	Steel, zinc-plated

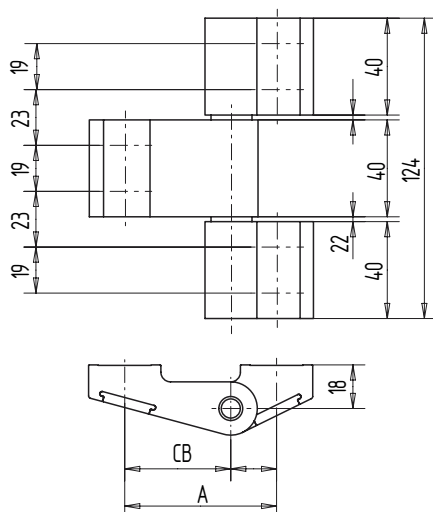
For 3-parted hinges, consisting of:

- 3x counter plate 20 mm breit, 6x countersunk screw, 6x guide bushing

Art.-N°	Material/Finish
04.098.0000.010	Steel, zinc-plated



A	B	C
65	19	44
88	44	44



A	B	C
65	19	44
88	44	44

Aluminium Door-hinge

- Center of rotation distance = 18 mm
- With covering slider
- Suitable for left or right hand installation

2-parts

Art.-N°	Axis-center distance	Material/Finish
04.250.1863.114	63	Al, E6/C-0 anodized
04.250.1863.154	63	Al, E6/C-34 anodized
04.250.1863.198	63	Al, Stainless Steel finish
04.250.1863.255	63	Al, RAL 9016 powder-coated
04.250.1863.299	63	Al, special surface
04.250.1888.114	88	Al, E6/C-0 anodized
04.250.1888.154	88	Al, E6/C-34 anodized
04.250.1888.198	88	Al, Stainless Steel finish
04.250.1888.255	88	Al, RAL 9016 powder-coated
04.250.1888.299	88	Al, special surface

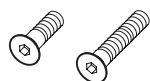
3-parts

Art.-N°	Axis-center distance	Material/Finish
04.252.1863.114	63	Al, E6/C-0 anodized
04.252.1863.154	63	Al, E6/C-34 anodized
04.252.1863.198	63	Al, Stainless Steel finish
04.252.1863.255	63	Al, RAL 9016 powder-coated
04.252.1863.299	63	Al, special surface
04.252.1888.114	88	Al, E6/C-0 anodized
04.252.1888.154	88	Al, E6/C-34 anodized
04.252.1888.198	88	Al, Stainless Steel finish
04.252.1888.255	88	Al, RAL 9016 powder-coated
04.252.1888.299	88	Al, special surface

Information:

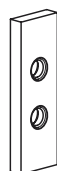
Without any further specifications, WSS supplies the hinges pre-assembled in right handed version and with the following standard-accessories:

- Counter plates Art.-N° 04.180.0300.705
- Fastening screws Art.-N° 04.254.0028.010



Fixing Screw

Art.-N°	Measurement	Material/Finish
04.254.0028.010	M8 x 28	Steel, zinc-plated
04.254.0050.010	M8 x 50	Steel, zinc-plated



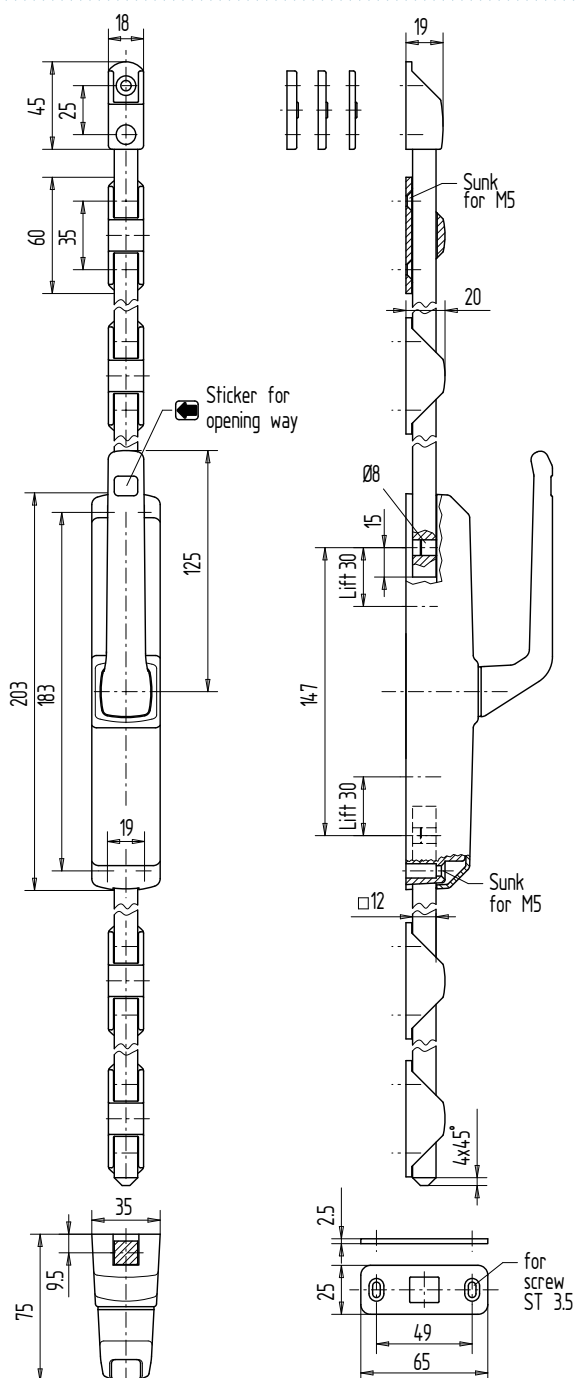
Counter Plate

- Centric fixing holes

Art.-N°	Dimension	Material/Finish
04.174.0100.010	60 x 20 x 6	Steel, zinc-plated







Cremone Bolt, Concealed Screwing

- Face-mounted lock
- For 12 mm aluminium square rods
- With cover cap
- Suitable for left or right hand installation with:
 - 4 rod guides and PVC-guide-pieces
 - 1 upper locking piece
 - 1 locking plate
 - 3 PVC-distance plates (without square rod)

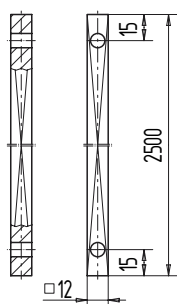
Art.-N°	Direction	Material/Finish
07.154.0000.730	right rotating	Zink cast, silver powder-coated
07.154.0000.740	right rotating	Zink cast, dark-bronze powdercoated
07.154.0000.750	right rotating	Zink cast, RAL 9010 powder-coated
07.154.0000.755	right rotating	Zink cast, RAL 9016 powder-coated
07.154.0000.780	right rotating	Zink cast, yellow chromated
07.154.1000.730	left rotating	Zink cast, silver powder-coated
07.154.1000.740	left rotating	Zink cast, dark-bronze powdercoated
07.154.1000.750	left rotating	Zink cast, RAL 9010 powder-coated
07.154.1000.755	left rotating	Zink cast, RAL 9016 powder-coated
07.154.1000.780	left rotating	Zink cast, yellow chromated

Information:

Material/Finish Zink cast, yellow chromated, suitable for coating by customer.

Accessories:

- Aluminium-square rod



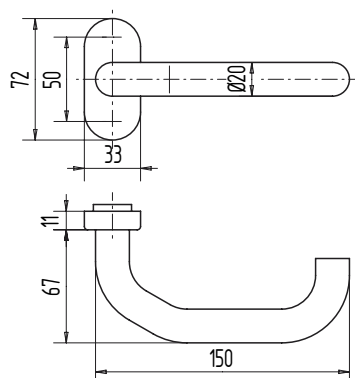
Aluminium Square Rod

- 12 mm square
- Both-sided drilled
- Length 2,500 mm

Art.-N°	Material/Finish
07.156.0000.105	Al, bright
07.156.0000.230	Al, silver powder-coated
07.156.0000.240	Al, dark-bronze powder-coated
07.156.0000.250	Al, RAL 9010 powder-coated
07.156.0000.255	Al, RAL 9016 powder-coated

Suitable for:

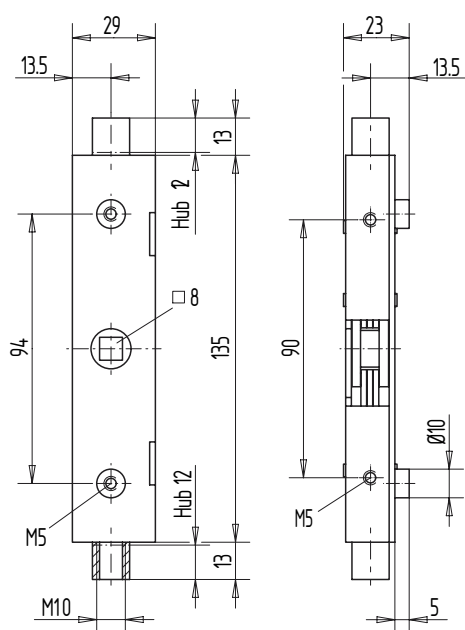
Cremone bolt, surface mounted



Lever Handle, model 138 GF

- With 8 oder 9 mm square hole
- Retraction mechanism
- With concealed screw holes
- Firmly installed and turnable
- With oval escutcheon

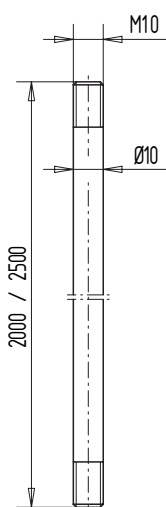
Art.-N°	Square	Installation Height	Material/Finish
02.160.1100.112	8	78	Al, E4/C-0 anodized
02.160.1100.255	8	78	Al, RAL 9016 powder-coated
02.160.1100.426	8	78	St/St V2A, brushed



Flush Bolt without Front Plate

- Stroke 12 mm
- 8 mm square follower
- Rod connectors M10
- Thread M5 for fastening

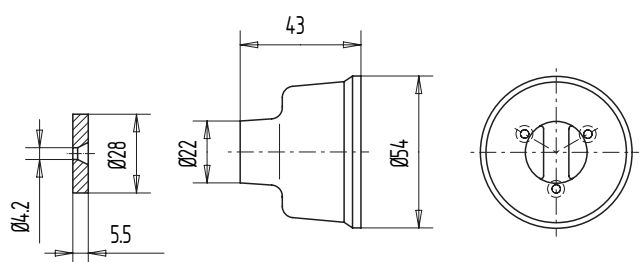
Art.-N°	Material/Finish
07.360.0000.010	Steel, zinc-plated



Round Rod

- 10 mm diameter
- Both sides with thread M10
- Length 2,000 or 2,500 mm

Art.-N°	Length	Material/Finish
07.210.2000.010	2000	Steel, zinc-plated
07.210.2000.105	2000	Al, bright
07.210.2000.114	2000	Al, E6/C-0 anodized
07.210.2000.405	2000	Stainless Steel V2A, bright
07.210.2500.010	2500	Steel, zinc-plated
07.210.2500.105	2500	Al, bright
07.210.2500.114	2500	Al, E6/C-0 anodized
07.210.2500.405	2500	Stainless Steel V2A, bright



Magnetic Door Stay Fastener, wall-mounted

- Magnetic power 200 N
- PVC case
- With counterpiece

Art.-N°

06.351.0000.570

Material/Finish

PVC, grey

Cable Spiral 370

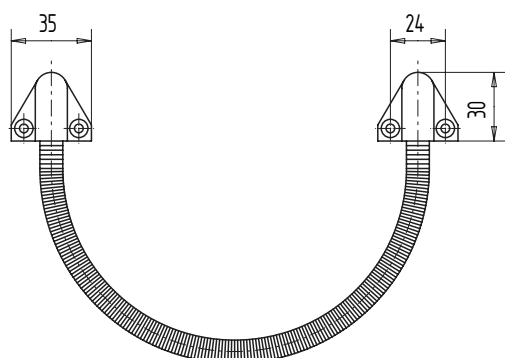
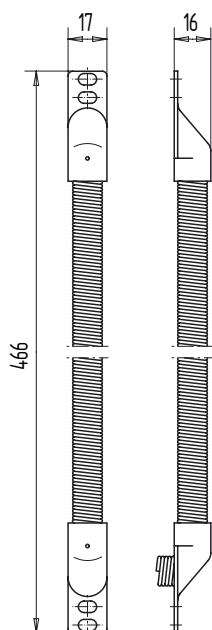
- Up to 180° opening width at max. 36 mm center of rotation
- Concealed without holding case
- Inner thread 10 mm/up to max. 9 mm cable diameter
- Spiral 370 mm long

Art.-N°

05.811.0000.026

Material/Finish

Steel, chrome-plated



Cable Transition, 200 mm long

- Surface mounted
- With PVC end pieces

Art.-N°

05.813.0079.325

Cable-Ø

max. 7 mm

Outer-Ø

9

Material/Finish

Brass, matt nickel plated

05.813.0710.550

max. 7 mm

10

PVC, white



Wilh. Schlechtendahl & Söhne
GmbH & Co. KG

Hauptstrasse 18–32
42579 Heiligenhaus
Germany

Phone: +49 (0) 20 56/17-0
Fax: +49 (0) 20 56/51 42

wss@wss.de
www.wss.de

based in 42579 Heiligenhaus,
Local court Wuppertal, HRA 20804

Managing Directors: Guido Lücker, Robin Fasel

VAT No: DE 121546484
Tax ID: 13957280071

All image, product, dimension and design information is correct at the time of going to press. We reserve the right to make any changes that may be required for technical and further development. We assume no liability for printing or other errors. Legal claims, regardless of their nature, may not be inferred from the use of our documents. No part of this document may be reproduced without our prior written consent.