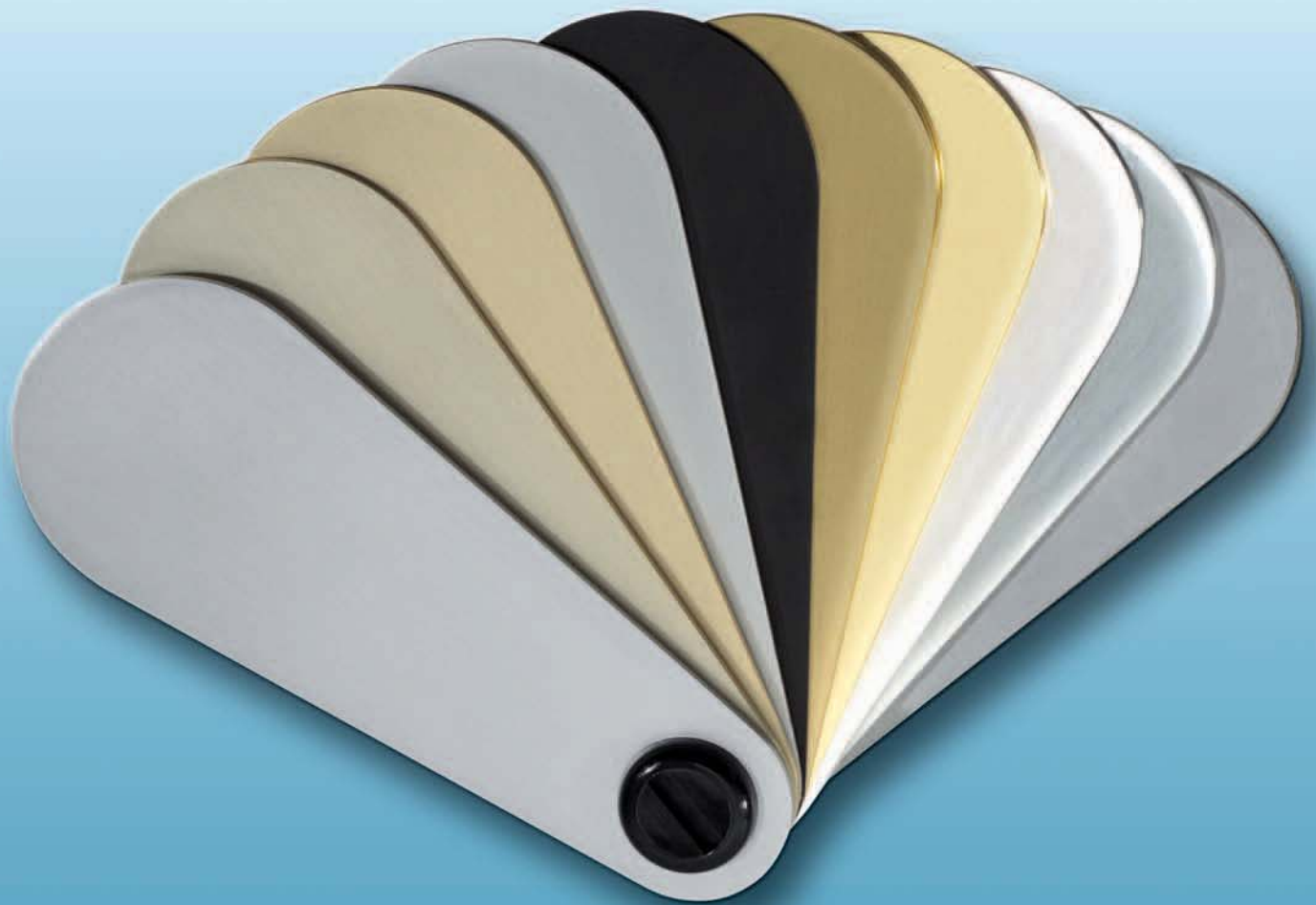


General Information

CONTENTS

Sales promotion	350 - 351
Code of material and surface finishes	352
Examples of colours	353
Imprint	354





Sales promotion



Sample display

ca. 350 x 400 mm

„STUDIO - Private Line“

99.100.0400.____



Sample display

ca. 350 x 400 mm

„ATELIER F/R - Business Line“

99.102.0400.____



Colour swatch

Aluminium, brass and stainless steel

99.110.0000.999



Colour chart

ca. 450 x 450 mm

Aluminium, brass and stainless steel

99.120.0000.999

Sales promotion



Sample display

ca. 400 x 720 mm

Fittings for internal doors

99.130.0000.999



Sample display

ca. 400 x 720 mm

Fittings for external doors

99.132.0000.999



Sample case

ca. 520 x 430 x 200 mm

Fittings for internal and external doors

99.140.0000.999

The resources shown are provided to support our customers own sales and marketing activities when using the WSS range of products.

- photos and drawings for your presentation
- DXF-drawings for CAD-systems
- installation drawings and instructions
- further catalogues and brochures available on request
- reference samples for architects
- sales training support
- homepage with additional information
- high-gloss poster

- Data-files are available on CD-Rom

Contents:

presentation
catalogue
price list
DXF-drawings
TIFF-drawings
installation instructions



code of material and surface finishes

STEEL

- 010 = galvanized
- 025 = matt nickel plated
- 050 = RAL 9010 pure white
- 055 = RAL 9016 traffic white
- 095 = RAL coated
- 099 = special colours

ALUMINIUM

Anodizing
after Euras standard colour swatch and standard colours
(dip colouring)

- 105 = mill finish
- 112 = E4/C-0 silver
- 114 = E6/C-0 silver
- 122 = E4/EV 2 champagne
- 124 = E6/EV 2 champagne
- 127 = E4/EV 3 similar brass
- 129 = E6/EV 3 similar brass
- 132 = E4/S5/EV 5 similar gold
- 134 = E6/S5/EV 5 similar gold
- 137 = E4/C 31 similar stainless steel
- 139 = E6/C 31 similar stainless steel
- 142 = E4/C 32 light bronze
- 144 = E6/C 32 light bronze
- 147 = E4/C 33 medium bronze
- 149 = E6/C 33 medium bronze
- 152 = E4/C 34 dark bronze
- 154 = E6/C 34 dark bronze
- 157 = E4/C 35 black
- 159 = E6/C 35 black
- 199 = special anodized

Coating

- 250 = RAL 9010 pure white
- 255 = RAL 9016 traffic white
- 295 = RAL coated
- 299 = special coated

BRASS

- 305 = mill finish
- 310 = galvanized
- 316 = polished, without lacquer
- 318 = polished, with lacquer
- 325 = matt nickel plated
- 326 = matt brushed, without lacquer
- 328 = matt brushed, with lacquer
- 350 = RAL 9010 pure white
- 355 = RAL 9016 traffic white
- 372 = satin chrome
- 374 = polished chrome
- 376 = velour nickel plated
- 395 = RAL coated
- 399 = special colours

STAINLESS STEEL

- 405 = mill finish (bright)
- 416 = polished
- 426 = satin
- 499 = special colours

PLASTIC

- 505 = plastic
- 550 = white
- 565 = black
- 599 = special colours

MALLEABLE CAST IRON

- 605 = mill finish
- 610 = galvanized
- 699 = special colours

ZINC CASTING

- 705 = mill finish
- 725 = matt nickel plated
- 730 = silver coated
- 740 = dark brown coated
- 750 = RAL 9010 pure white
- 755 = RAL 9016 traffic white
- 772 = satin chrome
- 774 = polished chrome
- 795 = RAL coated
- 799 = special colours

GLASS

- 805 = clear

INFORMATION

- E4** finished and brushed
- E6** chemical etched
- C-0** equivalent to EV1

All anodized fittings can also be delivered with a polished surface.

Fittings ordered in HEWI colours will be supplied painted to the nearest RAL colour match.

Slight deviations in colour are due to the manufacturing process and cannot be eliminated completely.

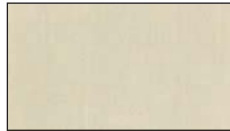
Brass fittings are sealed with a clear lacquer as a standard finish, but can be delivered without this coating.

Examples of colours

ALUMINIUM



E4/C-0
silver



E4/EV 2
champagne



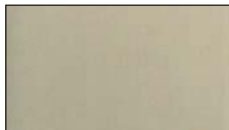
E4/EV 3
similar brass



E4/S5/EV 5
similar gold



E4/C 31
similar stainless steel



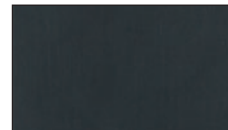
E4/C 32
light bronze



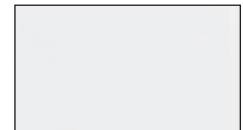
E4/C 33
medium bronze



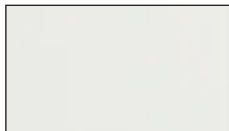
E4/C 34
dark bronze



E4/C 35
black



RAL 9010
pure white



RAL 9016
traffic white



RAL 1023
traffic yellow



RAL 3003
ruby red



RAL 3007
black red



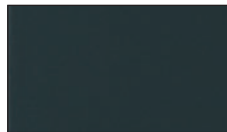
RAL 5002
ultramarine blue



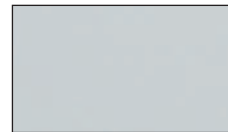
RAL 5011
steel blue



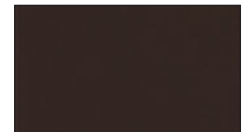
RAL 6029
mint green



RAL 7016
anthracite grey



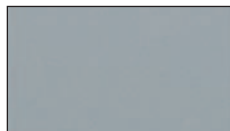
RAL 7035
light grey



RAL 8014
sephia brown



RAL 9005
jet black



RAL 9006
white aluminium

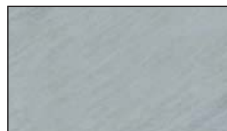
BRASS



matt brushed
with lacquer



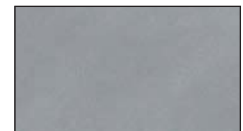
polished,
with lacquer



satin chrome

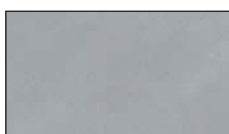


polished chrome



velour nickel plated

STAINLESS STEEL



satin



polished

INFORMATION

Please refer to "Materials and surface finishes" for details of finishes available in each product range.

These examples of colours are only for your guidance. **Differences in colour are determined by the printing.**

Further surface finishes are available. If required please contact our sales department.



Imprint

Phone	+49 (0) 20 56 / 17 - 0	
Fax	+49 (0) 20 56 / 51 42	
Internet	www.wss.de	
E-mail	wss@wss.de	
Factory 1 and Administration:	Mozartstraße 4 - 12 Postfach 10 05 52/62	DE-42579 Heiligenhaus DE-42570 Heiligenhaus
Factory 2:	Hauptstraße 18 - 32	DE-42579 Heiligenhaus

Bank correspondents

	Account	Sortcode	Swift-Code (BIC)	IBAN
Postbank Essen	26 500-434	360 100 43	PBNKDEFF360	DE38 3601 0043 0026 5004 34
Kreissparkasse Düsseldorf	0018007278	301 502 00	WELADED1KSD	DE39 3015 0200 0018 0072 78
National-Bank AG, Velbert	685 100	360 200 30	NBAGDE3E	DE46 3602 0030 0000 6851 00
Deutsche Bank AG, Wuppertal	4878 500	330 700 90	DEUTDEDW	DE10 3307 0090 0487 8500 00

Kommanditgesellschaft, Sitz Heiligenhaus, Amtsgericht Velbert, Handelsregister: HRA 233

Persönlich haftende Gesellschafter: WSS-Verwaltungs-Gesellschaft mit beschränkter Haftung,
Sitz Heiligenhaus und Petra Wevers-Adam, Velbert, HRB 136

Geschäftsführer: Hermann Fasel, Manfred Meerkamp, Edith Maas

We cannot give any guarantee regarding misprints or other technical mistakes.

Legal claims, no matter which kind, cannot be derived from using our catalogue.

The reprint of this catalogue, also in parts, needs our special permission.

Heiligenhaus, September 2003
Wilh. Schlechtendahl & Söhne
GmbH & Co. KG



Notes



Notes