

STUDIO Exclusiv - Private Line



STUDIO Exclusiv - Private Line

Designer finishes which exceed the demands of the discerning user.

4



CONTENTS



Technical details

22 - 25

Product information

Locks, lever handles
and hinges

116 - 117



Glass preparation

60 - 61



4





Locks, lever handles and hinges

■ suitable for 8 (10) mm glass / 24 (26) mm frame rebate depth

■ frame pivots

Page 57 – 59

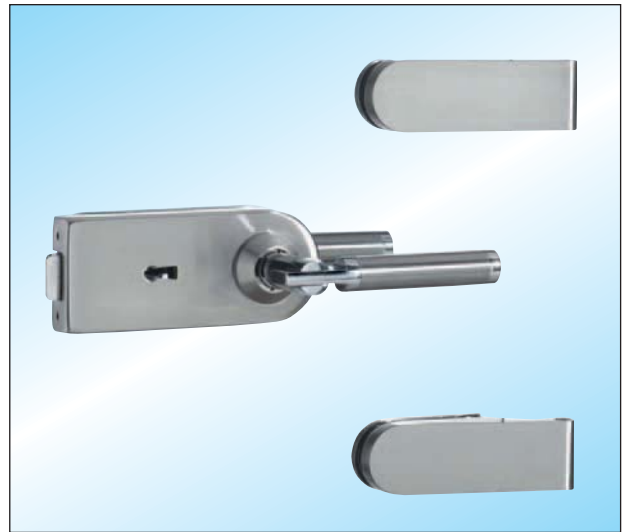


STUDIO Exclusiv / Set 1

lock and hinges: brass polished chrome

lever handles: brass polished chrome / satin nickel

latch lock, non locking, lever handles/rear position	23.100.0500.399
latch lock, non locking, lever handles/forward position	23.102.0500.399
warded lock with 2 keys	23.104.0500.399
lock prepared for profile cylinder	23.106.0500.399



STUDIO Exclusiv / Set 3

lock and hinges: brass velour nickel plated

lever handles: brass polished chrome / satin stainless steel

latch lock, non locking, lever handles/rear position	23.300.0500.399
latch lock, non locking, lever handles/forward position	23.302.0500.399
warded lock with 2 keys	23.304.0500.399
lock prepared for profile cylinder	23.306.0500.399



STUDIO Exclusiv / Set 2

lock and hinges: brass polished

lever handles: brass polished / brass polished chrome

latch lock, non locking, lever handles/rear position	23.200.0500.399
latch lock, non locking, lever handles/forward position	23.202.0500.399
warded lock with 2 keys	23.204.0500.399
lock prepared for profile cylinder	23.206.0500.399



STUDIO Exclusiv / Set 4

lock and hinges: brass polished

lever handles: brass polished

latch lock, non locking lever handles/rear position	23.400.0500.318
latch lock, non locking, lever handles/forward position	23.402.0500.318
warded lock with 2 keys	23.404.0500.318
lock prepared for profile cylinder	23.406.0500.318

Locks, lever handles and hinges

■ suitable for 8 (10) mm glass / 24 (26) mm frame rebate depth

■ frame pivots

Page 57 – 59



STUDIO Exclusiv / Set 5

lock and hinges: brass polished chrome
lever handles: brass polished chrome

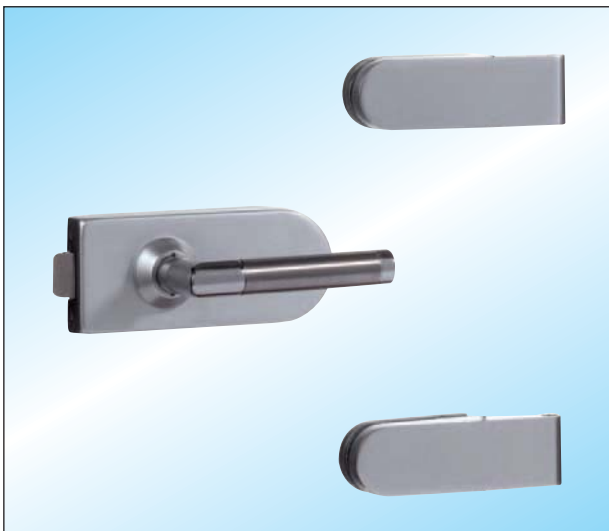
latch lock, non locking, lever handles/rear position	23.500.0500.374
latch lock, non locking, lever handles/forward position	23.502.0500.374
warded lock with 2 keys	23.504.0500.374
lock prepared for profile cylinder	23.506.0500.374



STUDIO Exclusiv / Set 7

lock and hinges: aluminium similar satin stainless steel
lever handles: brass polished chrome / satin stainless steel

latch lock, non locking, lever handles/rear position	23.700.0500.399
latch lock, non locking, lever handles/forward position	23.702.0500.399
warded lock with 2 keys	23.704.0500.399
lock prepared for profile cylinder	23.706.0500.399



STUDIO Exclusiv / Set 6

lock and hinges: aluminium silver fine polished
lever handles: brass polished chrome / satin stainless steel

latch lock, non locking, lever handles/rear position	23.600.0500.399
latch lock, non locking, lever handles/forward position	23.602.0500.399
warded lock with 2 keys	23.604.0500.399
lock prepared for profile cylinder	23.606.0500.399



STUDIO Exclusiv / Set 8

lock and hinges: brass satin chrome
lever handles: brass polished chrome / brass satin chrome

latch lock, non locking, lever handles/rear position	23.800.0500.399
latch lock, non locking, lever handles/forward position	23.802.0500.399
warded lock with 2 keys	23.804.0500.399
lock prepared for profile cylinder	23.806.0500.399



Notes

