

Surface keys	516
Color samples	518
Icons which can help you	519
Index	520
Terms of Business	524



1



2



3



4



5



6



7



8



9



i

**1**

## Surface keys

**2****3****4****5****6****7****8****9****i**

### STEEL

- 005 = Steel bright
- 008 = Steel hot dipped
- 010 = Steel galvanized
- 011 = Steel sendzimir zinc plated
- 012 = Steel yellow chromated
- 015 = Steel black chromated
- 020 = Steel black lacquered
- 025 = Steel satin nickel plated
- 026 = Steel chrome plated
- 030 = Steel silver powder coated
- 035 = Steel silver lacquered
- 040 = Steel dark bronze powder coated
- 045 = Steel dark bronze lacquered
- 048 = Steel RAL 9010 pure white lacquered
- 050 = Steel RAL 9010 pure white powder coated
- 054 = Steel RAL 9016 traffic white lacquered
- 055 = Steel RAL 9016 traffic white powder coated
- 060 = Steel dark grey powder coated
- 065 = Steel deep black powder coated
- 095 = Steel RAL powder coated
- 099 = Steel special surface

### Brass

- 305 = Brass bright
- 308 = Brass bronzed
- 310 = Brass galvanized
- 316 = Brass polished
- 318 = Brass polished, with clear lacquer
- 325 = Brass satin nickel plated
- 326 = Brass satin
- 328 = Brass satin, with clear lacquer
- 330 = Brass silver lacquered
- 340 = Brass dark bronze powder coated
- 350 = Brass RAL 9010 pure white powder coated
- 355 = Brass RAL 9016 traffic white powder coated
- 371 = Brass chrome plated
- 372 = Brass satin chrome plated
- 374 = Brass polished chrome plated
- 375 = Brass nickel plated
- 376 = Brass velour nickel plated
- 377 = Brass polished nickel plated
- 395 = Brass RAL powder coated
- 399 = Brass special surface

### ALUMINIUM

#### Anodizing

#### acc. to EURAS and standard colors

- 105 = Aluminium bright
- 110 = Aluminium E2/C-0 silver
- 111 = Aluminium E3/C-0 silver
- 112 = Aluminium E4/C-0 silver
- 113 = Aluminium E5/C-0 silver
- 114 = Aluminium E6/C-0 silver
- 122 = Aluminium E4/EV 2 German silver
- 123 = Aluminium E5/EV 2 German silver
- 124 = Aluminium E6/EV 2 German silver
- 127 = Aluminium E4/EV 3
- 129 = Aluminium E6/EV 3
- 137 = Aluminium E4/C-31
- 139 = Aluminium E6/C-31
- 142 = Aluminium E4/C-32
- 144 = Aluminium E6/C-32
- 147 = Aluminium E4/C-33
- 149 = Aluminium E6/C-33
- 152 = Aluminium E4/C-34 dark bronze
- 153 = Aluminium E5/C-34 dark bronze
- 154 = Aluminium E6/C-34 dark bronze
- 157 = Aluminium E4/C-35 black
- 158 = Aluminium E5/C-35 black
- 159 = Aluminium E6/C-35 black
- 198 = Aluminium stainless steel effect

#### Powder coating

- 230 = Aluminium silver
- 240 = Aluminium dark bronze
- 250 = Aluminium RAL 9010
- 255 = Aluminium RAL 9016
- 260 = Aluminium RAL 3026
- 267 = Aluminium RAL 9006
- 295 = Aluminium RAL
- 299 = Aluminium special surfaces

#### Lacquer

- 220 = Aluminium black
- 235 = Aluminium silver
- 245 = Aluminium dark bronze
- 251 = Aluminium RAL 9010
- 256 = Aluminium RAL 9016

## STAINLESS STEEL

- 405 = Stainless steel V2A 304 bright
- 408 = Stainless steel V4A 316 bright
- 416 = Stainless steel V2A 304 polished
- 418 = Stainless steel V4A 316 polished
- 426 = Stainless steel V2A 304 satin
- 428 = Stainless steel V4A 316 satin
- 429 = Stainless steel V2A 304 PVD/Titan coated
- 455 = Stainless steel V2A 304 RAL 9016 powder coated

## PVC

- 505 = PVC natural
- 510 = PVC transparent
- 535 = PVC silver lacquered
- 550 = PVC white
- 556 = PVC RAL 9016 traffic white lacquered
- 558 = PVC blue
- 560 = PVC bronze
- 565 = PVC black
- 570 = PVC grey
- 572 = PVC stainless steel effect
- 573 = PVC brass effect
- 575 = PVC green
- 580 = PVC metalized

## GLASS

- 805 = Glass clear

## RUBBER

- 825 = Rubber grey

## MALLEABLE CAST IRON

- 605 = Malleable cast iron untreated
- 608 = Malleable cast iron hot zinc dipped
- 610 = Malleable cast iron galvanized
- 620 = Malleable cast iron black lacquered
- 625 = Malleable cast iron nickel plated
- 699 = Malleable cast iron special surface

## ZINC DIE CASTING

- 705 = Zinc die casting untreated
- 710 = Zinc die casting galvanized
- 715 = Zinc die casting black chromated
- 725 = Zinc die casting satin nickel plated
- 730 = Zinc die casting silver powder coated
- 735 = Zinc die casting silver lacquered
- 737 = Zinc die casting white lacquered
- 740 = Zinc die casting dark bronze powder coated
- 750 = Zinc die casting RAL 9010 pure white powder coated
- 755 = Zinc die casting RAL 9016 traffic white powder coated
- 770 = Zinc die casting RAL 9005 black powder coated
- 772 = Zinc die casting satin chrome plated
- 773 = Zinc die casting stainless steel effect
- 774 = Zinc die casting polished chrome plated
- 780 = Zinc die casting yellow chromated
- 795 = Zinc die casting RAL powder coated
- 799 = Zinc die casting special surface

## BRONZE

- 905 = Bronze natural

## INFORMATION

- E2 = satin
- E3 = polished
- E4 = grinded and brushed
- E5 = grinded, brushed and polished
- E6 = chemically pickled
- C-0 = corresponds EV 1

The assortment of colors is different in each chapter. You will find details in the respective chapters.

Due to different materials and treatments, there might be little color differences.

Further surface treatments are possible on request.



1

# Color samples

2

## ALUMINIUM



E4/C-0  
silver anodizing



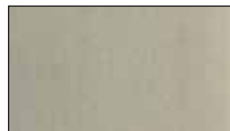
E4/EV 2  
German silver anodizing



E4/EV 3  
brass color anodizing



E4/S5/EV 5  
goldfarbig

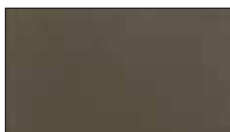


E4/C 31  
stainless steel color anodizing

3



E4/C 32  
light bronze anodizing



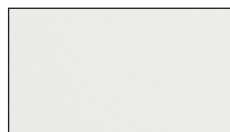
E4/C 33  
mid bronze anodizing



E4/C 34  
dark bronze anodizing

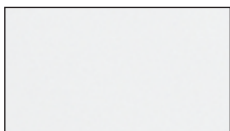


E4/C 35  
black anodizing



RAL 9010  
pure white powder coating

4



RAL 9016  
traffic white powder coating



RAL 1023  
traffic yellow powder coating



RAL 3003  
ruby red powder coating



RAL 3007  
dark red powder coating



RAL 5002  
ultramarine blue powder coating

5



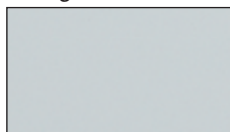
RAL 5011  
steel blue powder coating



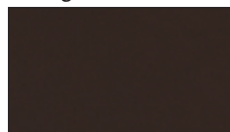
RAL 6029  
mint green powder coating



RAL 7016  
anthracite grey powder coating



RAL 7035  
light grey powder coating

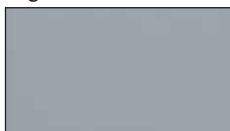


RAL 8014  
sepia brown powder coating

6



RAL 9005  
deep black powder coating



RAL 9006  
white aluminium powder coating

7

## MESSING



satin finish,  
with clear lacquer



polished,  
with clear lacquer



satin chrome plated



polished chrome plated

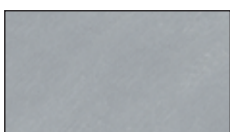


velour nickel plated

8

9

## EDELSTAHL



satin grinded



polished

## INFORMATION

The variety of available colors is different in each chapter. Details you can find in each product description under „Material/Surface“.

These color samples are only for orientation. Color differences are caused typographically.

Further surfaces/colors are possible. Please ask our staff.

i

## Icons which can help you

1

2

3

4

5

6

7

8

9

i

### Symbols and their meaning



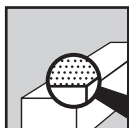
#### Frequently asked questions (FAQ)

The symbol for frequently asked questions guides the way to various answers in each chapter.



#### Technical information

There are many technical information about different products mentioned in this catalogue. This symbol guides you to the most important information about each product.



#### Surface

There are many technical information about different products mentioned in this catalogue. This symbol guides you to the most important information about each product.



#### Certifikate European

This sign indicates the usability acc. to the guidelines of a European harmonized standard in combination with further information (e.g. standard codes etc.).



#### Panic function

Enables the escaping from the inside to the outside, even when the door is locked.



#### EN 179

EN standard for emergency exit doors



#### EN 1125

EN standard for panic doors



#### RAL

This quality label shows that the product has been tested on durability, burglary resistance etc. acc. to a RAL-guideline.



#### MPA-tested

This quality label indicates that the product was tested on durability and smoke- and fire resistance.

# Index

<b>A</b>	<b>Page</b>
3-latch-locks	103
Accordion cremone bolts	283 - 288
Accordion door handles	217
Accure support	299
Actuator hatches	106, 374
Adhesion lubricant	173
Adjustment bush	275
Adjustment key	322, 334, 338
Adorn ring	234

<b>B</b>	<b>Page</b>
Balcony door handles	217
Barrel bolts	443, 444
BB-insert	173
BB-key	173
Bearing ring	346
Blind cylinder	192
Blind rose	241
Bow nut	494

<b>C</b>	<b>Page</b>
Cable spiral	376, 377
Cable transition	375 - 378
Cone hinge	353
Connection rods	169, 173
Console for hollow profiles	494
Consoles, aluminium	491 - 493
Construction hinges	339, 340, 345, 347 - 349
Counter boxes	116
Coupé door handles	217
Cover for bolt hole	135
Cremone bolt	417 - 425
Cremone bolt	426
Cremone bolt locks	116, 117
Current transmitter	379
Cylinder keys	192
Cylinder pad locks	193
Cylinders	174, 189 - 191

<b>D</b>	<b>Page</b>
Dead bolt lock	89
Dead bolt locks	88, 89, 101, 111
Dead bolt locks, security-	87
DIN EN 1125	120 - 123
DIN EN 179	59, 61, 63, 65, 67, 69, 71, 73, 97, 99

Door bumper	402 - 410
Door closer, Direct	370
Door closing bumper	371, 372
Door closing spring	359
Door coordinator device	105, 374
Door handles	267, 268
Door holder	385 - 395, 401
Door opening limiter	105, 373
Door snap-ins	118
Double action door latch lock	92
Double action hinge	356, 357
Drilling gauges for aluminium hinges	311, 320, 321
Drilling gauges for corner post constructions	311, 321

<b>E</b>	<b>Page</b>
Electric strike	178, 179, 181 - 183
Espagnollette lock	440

<b>F</b>	<b>Page</b>
Finger protect curtain system	455
Finger protect profiles	455, 456
Fire-rescue triangle	174
Fire-rescue triangle key	174
Floor bush	431
Floor bushes for accordion gate cremone bolts	291
Floor bushes for cremone bolts	170, 171, 428, 429
Floor locking hatches for cremone bolts	171, 429
Flush bolt	434 - 440
Flush bolt	435 - 440
Follower contact	379
Forcing rods	169, 170

<b>G</b>	<b>Page</b>
Gate hinge	355
Gate holder	396 - 399
Gate roller	299
Gear boxes for snap-in bolts	441
Glass holders, aluminium	499, 500
Glass holders, brass/stainless steel (V2A)	501
Glass holders, stainless steel (V4A)	502 - 504
Glass holders, zinc diecasting	496 - 498
Guidance rollers	298

<b>H</b>	<b>Page</b>
Hand rail supports	505 - 508
Handle roses for full door frames	250
Handles	269, 296
Handles for 2 horizontal separated PZ-holes	259, 260

Handles for full door frames	235, 236, 238, 240, 241, 243 - 245, 249, 250
Handles for full door frames	235, 236, 238, 240, 241, 243 - 245, 249, 250
Handles for parallel laying PZ-holes	259, 260
Handles, push/pull	221, 469
Handles, push/pull, aluminium	468, 483, 484, 489, 490
Handles, push/pull, brass	488
Handles, push/pull, crystal glass	479, 480
Handles, push/pull, glass	485
Handles, push/pull, PVC	486
Handles, push/pull, stainless steel	462 - 471, 474, 475, 481, 482, 489
Handles, push/pull, wood	487, 490
Handles, WSS	203 - 216
Handles, WSS	203 - 216
Hanging rollers	294, 295
Hinge guard	364
Hinge, inlaid	361, 362
Hinges	359, 360
Hinges	363
Hinges for sliding-gate rollers	294
Hinges, aluminium, 2D	315, 316
Hinges, aluminium	328
Hinges, aluminium	326
Hinges, aluminium, 3D	308, 309
Hinges, stainless steel	336, 337, 340 - 344
Hinges, steel	333
Hinges, steel	332
Hollow profiles	491
<b>I</b>	<b>Page</b>
Intermediate rings	346
<b>K</b>	<b>Page</b>
Key	192
Knobs, WSS	218 - 220, 222 - 226
Knobs, WSS	218 - 220, 222 - 226
<b>L</b>	<b>Page</b>
Latch locks	90, 102, 111
Lever handle	445, 446, 451, 452
Lever locks	447 - 452
Lip sealing profile	363
Lock bolts	290, 291
Lock for shaft cover	453

Locking bolt	444
Locking hutch	172

<b>M</b>	<b>Page</b>
Magnetic contact	379
Mortise door locks	25, 30, 37, 100 - 103, 110
Mortise door locks for separated locking systems	93, 112
Mortise-, security-	26, 29
Mounting bar	323
Multi-point-locks	74, 76, 77, 79, 82 - 86

<b>P</b>	<b>Page</b>
Pad locks	193
Panic 3-latch-lock	104
Panic bars	124
Panic bars	122 - 124
Panic counter boxes	42, 43, 109
Panic locks for full door frames	107, 108
Panic mortise locks	27, 31 - 36, 38 - 41
Panic mortise locks for separated locking systems	94, 112
Panic multi-point-locks	75, 78, 79
Panic push bars	120, 121
Panic security mortise locks	28
Panic-devices, DIN EN 179	59, 61, 63, 65, 67, 69, 97, 99
Profile cylinders	174, 189 - 191
Pull ring handle	264
Pull ring handle	268
Pull ring handle	263, 265, 266
Pull ring handles	263, 264
PZ-Roses	242
PZ-roses for 2 horizontal separated PZ-holes	262
PZ-roses for 2 vertical separated PZ-holes	261
PZ-roses for full door frames	239, 246
PZ-roses, WSS	227, 229 - 233, 250

<b>R</b>	<b>Page</b>
Reed contacts	379
Rod connectors for accordion cremone bolts	289
Rod connectors for cremone bolts	427
Roller latch locks	92
Roller locking bolts	444
Rollers	297
Roses, adhesive	232
Roses, rain resistant	233, 234, 261
Rounded rod for cremone bolts	427

1

2

3

4

5

6

7

8

9

i

1

**S** **Page**

Safety bolt	364
Scissor rim locks	119
Security dead bolt lock	87
Security fittings	253 - 258
Security mortise locks	26, 29
Security roses	228
Security roses, WSS	229, 230
Security roses, WSS	229, 230
Set for passive leaf	237, 239, 247, 248

2

3

Short plates	252
Sliding door locks	114, 115
Sliding door pull ring handles	264, 265
Sliding gate handles	264
Sliding gate locks	113, 114

4

SI-panic counter boxes	54
SI-panic devices, DIN EN 179	71, 73
SI-panic locks	45, 46
SI-panic motor locks	50, 51
SI-panic multi-point-locks	52, 53

5

Snap-in bolts	442
Special door handle WSS	249
Spiky bar	299
Spring hinges	358
Square rod	425, 431

6

Square spindle	270 - 275
Square spindles	273, 274
Square spindles	270 - 275
Stable door lock	118
Strike plates	80, 131, 133 - 165, 167, 453

7

Swing bolt locks	91
Switching contacts for dead bolts	185

**T** **Page**

Thread pin	494
Top locks	166
Tubular bolts	433
Tubular door closers	370

8

**U** **Page**

U-flush bolt	434
--------------	-----

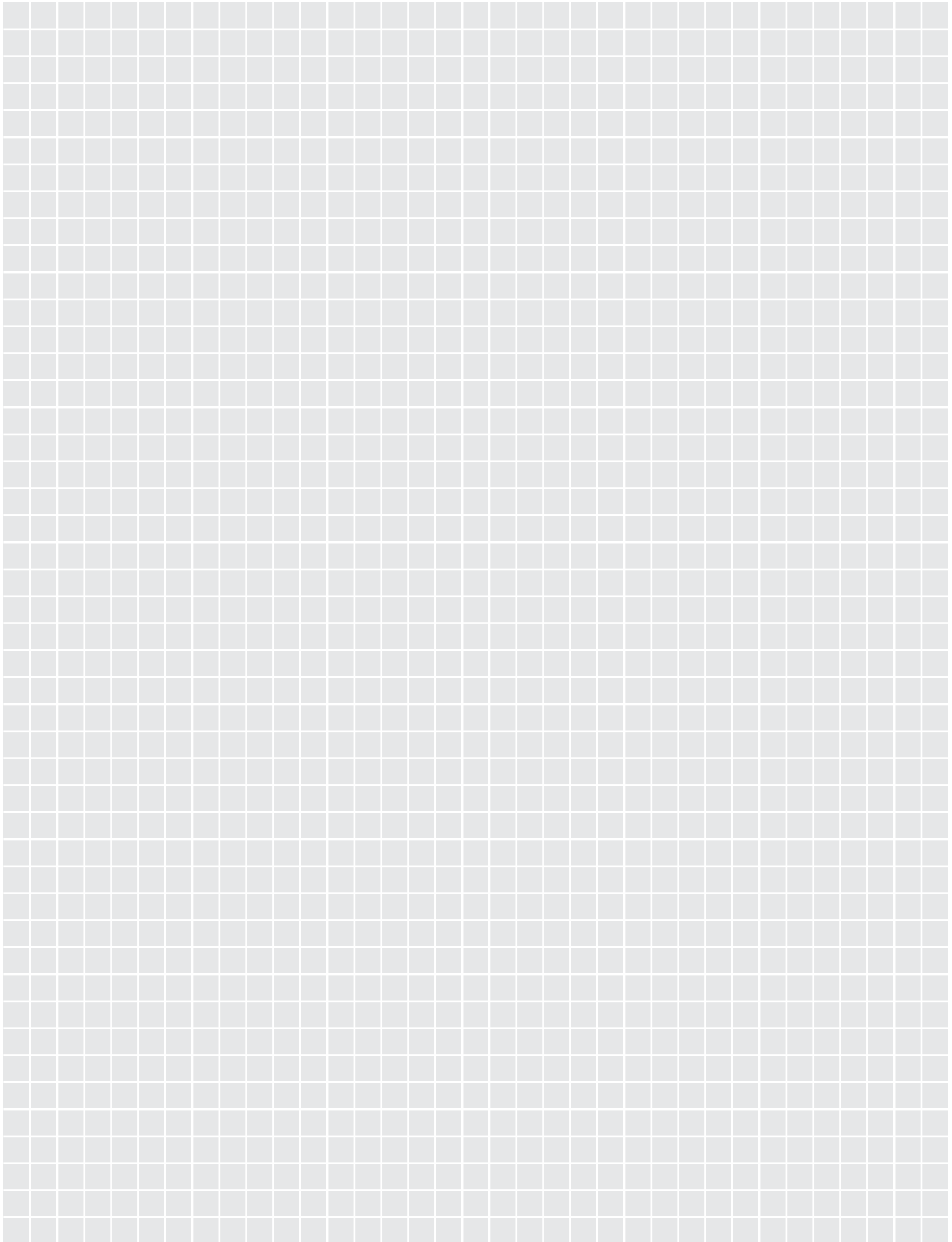
9

**W** **Page**

Weld on hinge, stainless steel V2A	352, 353
Weld on hinge, steel galvanized	350 - 352, 354
WSS blind roses	231

i

## Notes





# Terms of Business

Version: Februar 2009

## I. Scope, General

- (1) All offers, confirmations, deliveries and services to or on behalf of traders, legal entities under public law and special assets under public law are exclusively based on our Terms of Business set forth below. The delivery and assembly of smoke and heat exhaust systems is additionally governed by our respective Special Conditions. Anterior versions of our Terms shall be rendered ineffective for new contracts. This is also applicable for existing business connections.
- (2) Any deviations from or changes to our Terms of Business shall be subject to our prior written confirmation. In the context of existing business connections, the Terms set forth below are also applicable for future orders if we do not expressly refer to their applicability in each individual case. Any divergent terms that may be applied by the purchaser are also excluded if we do not expressly disagree with them or execute the delivery without reservation, being fully aware of such divergent terms.
- (3) If any provision or parts thereof be held impracticable or invalid, the effectiveness of other provisions shall remain unaffected. For this case, the Parties agree to replace the impracticable or invalid provisions with provisions as similar in economic terms to such invalid provision as may be legally possible. The same applies for any unintended omissions by one of the Parties.

## II. Offer, Order, and Conclusion of the Contract

- (1) Unless expressly limited, our offers are valid for an appropriate period of time and subject to change without notice. The goods are subject to prior sale.
- (2) Unless both Parties sign a document to that effect, contracts require our written confirmation in order to come into effect. Any changes, amendments, subsidiary agreements, in particular warrants and guarantees, are subject to our express written prior consent in order to become effective. This also applies for business transactions submitted to us by the purchaser through mediation of sales agents acting on our behalf. Provided our customers' order can be classified as an offer within the meaning of § 145 BGB (~ German Civil Code), the order can be accepted with a fortnight.
- (3) The purchaser shall review the contents of written order confirmations and shall notify us of any inconsistencies without undue delay.
- (4) Information on the subject of the delivery or service as well as their specifications do not represent warranted characteristics, but are mere descriptions.

## III. Prices

- (1) Unless expressly stated otherwise, our prices are calculated in euros and as a matter of principle refer to the net value of the goods quoted ex works (excluding transport packaging, transport costs, insurance, customs duties and taxes). The current VAT rate will be indicated separately and added to the net value.
- (2) We shall be entitled to pass on the charges for increased labour expenses as well as our cost price for materials and external services in proportion to the increase in such charges since the time the contract was concluded, provided a period of at least 4 months has passed between the conclusion of the contract and the delivery date (including delays which we are not accountable for). Unless expressly otherwise agreed, this provision shall also be applicable for master agreements and call-off purchase agreements. The delivery time within this meaning is deemed to be the time at which the goods are/can be provided for delivery/collection.
- (3) We reserve the right to raise a surcharge for quantities below minimum for orders of individual locks and fittings, especially for products with particular measurements or specifications.
- (4) To the extent that we grant discounts on our catalogue prices, no legal right shall be constituted as to the granting and amount of discounts. This shall also apply for the nonrecurring granting of special or quantity discounts or special prices. Prior to concluding the contract, we reserve the right to change our prices and discount policy at any time, in line with the cost situation. No discounts are granted for orders below € 200 in order to cover – at least partially – our handling costs.

## IV. Changes, Special Parts

- (1) Technically required changes and deviations from the specifications of an order are admissible on our part, provided the quality remains unaffected and such changes and deviations are reasonable with regard to the purchaser's justified concerns.
- (2) Any tools, equipment, moulds, models etc. manufactured for the production of special parts will always remain our property and cannot be released, even if the purchaser paid part of the production costs. We are under no obligation to accept follow-up orders.

## V. Delivery and Delays in Delivery

- (1) Unless otherwise agreed, our delivery terms are ex works.
- (2) Unless expressly stipulated as binding, our delivery terms are approximate dates which we will strive to observe. As soon as we can foresee that goods will not be ready for delivery within the given time period / at the given time, we will notify the purchaser immediately and in writing, indicating the reason for the delay and, if possible, the prospective delivery date. The notification of readiness for dispatch or collection is relevant for adherence to delivery dates, unless the goods have already left the warehouse within the indicated delivery period. We shall be entitled to deliver parts of the order within the delivery time if it can be reasonably expected of the purchaser to accept such deliveries. Each partial delivery constitutes a separate business transaction which can be invoiced separately.
- (3) The beginning of the delivery time indicated by us / the compliance with a fixed delivery date is subject to the clarification of all technical details as well as timely performance of the purchaser's duties. All rights of defence of non-performance are reserved.
- (4) The purchaser shall only have the right of rescission from the contract on grounds of non-performance on our part after a period of grace for provision of the service has expired. Granting a period of grace and rescission from the contract are to be made in writing.
- (5) Should the operation of our or our suppliers' business be disturbed by industrial disputes (strike or lock-out) or due to force majeure, such as natural disasters, war, riots, acts of sabotage, boycott or blockade, accidents, failure of machinery and loading units, interruption of energy supply or government action, or should the

supplier file for insolvency, and should this result in considerable obstruction or even a standstill in production, the delivery terms shall be extended by the duration of the disruption as well as a suitable start-up period. Unless prevented by the type and scope of the disruption, we undertake to notify the purchaser of the disruption, its type and time of occurrence within a period of 7 days following the occurrence of the event.

This period shall be deemed adhered to at the time the notification is dispatched. The same shall be applicable when the disruption has ended. Should the disruption be of a permanent nature, we shall be entitled to withdraw from the contract by written declaration. Otherwise the purchaser shall be obliged to accept the goods, provided this can be reasonably expected and a suitable period of grace has expired without results. In cases of unreasonableness and if the period of grace has expired, the purchaser shall be entitled to withdraw from the contract by written declaration. Any further claims against us shall be excluded in such cases.

- (6) Call-off purchase orders are valid for a maximum of 8 months after date of order confirmation. Following the expiration of this period, we shall be entitled to send any products that have not been called up to the purchaser and invoice them or to invoice for materials kept in our store, plus surcharges for costs and profit.
- (7) In case of delays in call-off purchases, collection or dispatch of goods for reasons within the purchaser's responsibility, we shall be entitled to charge a storage fee amounting to 0.5% of the invoice amount. The storage fee shall be charged one month after the readiness of the goods for dispatch was announced and shall be payable per opened month. The storage fee shall be limited to a maximum of 5% of the net value of the goods, plus VAT.

## VI. Dispatch, Packaging, Transfer of Risk, Insurance

- (1) For consequential losses caused by the transit / carrier such as loss or stealing of a whole consignment, burning of a consignment etc. we assume no liability of penalties with regards to deadlines which may have occurred etc.
- (2) The dispatch shall normally be effected at the purchaser's cost and risk, according to our best judgement with no obligation of cheapest and safest means of transport.
- (3) A charge will be raised for the packaging. Once the shipment has been accepted by the carrier without objections, evidence of appropriate packaging shall be deemed to be provided. The risk of deterioration or accidental loss shall be transferred to the purchaser as soon as the goods have been put at his disposal or have been handed over to the forwarder or carrier, however no later than 7 days following receipt of the notification that the goods are ready for dispatch.
- (4) Transport packaging
  - a) All forwarders provide iron-barred boxes on loan on a swapping basis.
  - b) Cardboard boxes: We exclusively use cardboard boxes that correspond to the latest packaging regulations and have the RESY label. The adhesive tape used to close the boxes is made from paper of the same type, and straps are made of recyclable polypropylene.
  - c) We invoice for transport packing at cost price. Packaging can be returned to us and recycled at no extra cost for us, provided return shipments are sent free domicile. Packaging materials will be recycled into filler materials and can only be accepted when dry and free from third-party boxes or straps. Any boxes not fulfilling these criteria will be rejected.

## VII. Returns

- (1) Returns require our permission and have to be made free of forwarding costs to our works.
- (2) If we are not responsible for the return, we may reduce the credit note up to 30% for the incurred expenses depending on the extent and manner of the return.

## VIII. Terms of Payment

- (1) All invoices are payable within 14 days with a 2 percent cash discount or 30 days net. Invoices shall be deemed settled on receipt of payment at our end. A cash discount is only granted if all invoices due for net payment have been settled. Invoices for assembly and wage labour are payable strictly net within 10 days. Furthermore, we shall be authorized to determine how payments are to be offset, according to §§ 366, 367 BGB (~ German Commercial Act).
- (2) Our sales representatives are not authorized to collect any payments.
- (3) Discounting of drafts is subject to special agreement. Drafts and cheques shall always be discounted in fulfilment.

## IX. Delay in Payment

- (1) On expiration of the date of payment, we shall, without the requirement of prior reminders, charge interest to the amount of the costs we incur for bank loans, however no less than 8% above the applicable base rate. We reserve the right to claim potential further damages.
- (2) All outstanding receivables (including those resulting from bills of exchange) shall become due for payment immediately in cases of delay in payment, pending suspension of payment, or unfavourable credit information on the purchaser (in particular in case of bill protests or compulsory execution).
- (3) Should the aforementioned case occur, we shall be entitled, for cautionary reasons, to retrieve goods that have already been delivered. The purchaser's obligation to pay shall remain unaffected in such cases. The purchaser shall grant us access, for this purpose, to the premises in which the goods are stored and shall surrender the goods. If no delivery has been made, we shall be entitled to produce and deliver goods subject to payment in advance or provision of a security. We shall also be entitled to withdraw from the contract and assert claims for damages.

## X. Material Defects and Liability for Other Claims

- (1) The quality of the goods to be delivered is exclusively based on our technical specifications and the technical specifications agreed upon. No contractual guarantees as to the quality of the goods to be delivered can be deducted from advertising or targeting. If production and delivery of the goods are based on drawings, samples, specifications etc. provided by the purchaser, it shall be the purchaser's sole risk that the goods are suitable for their intended use. The contractual status of the goods to be delivered shall be effective at the time of transfer of risks.

- (2) We exclude liability for material defects occurring due to unsuitable or improper use or handling, incorrect assembly, fair wear and tear or faulty or insufficient maintenance. We further exclude liability for the consequences of improper amendments or repairs by the purchaser or third parties or such changes or repairs as have been made without our consent. The same shall be applicable for defects that represent an insubstantial impairment of the product's value or suitability.
- (3) If a formal acceptance procedure has been agreed upon or if specimen sampling was carried out, claims for such defects are excluded as the purchaser should have recognized and identified in the course of a thorough acceptance procedure or specimen sampling.
- (4) Unless the law calls for extended time periods, in particular for goods whose intended use was for construction of a building and which, in line with that use, have deteriorated the quality of the building, entitlement to damages for defects become time-barred 12 months from the time the goods were delivered to the purchaser or a third party appointed for this purpose by the purchaser.
- (5) Unless expressly stipulated otherwise in writing, we exclude liability for the suitability of the goods offered or delivered by us for any purpose intended by the purchaser other than the general, intended use stipulated by us. It is exclusively incumbent upon the purchaser to test application of the goods for other than the intended use prior to their use.
- (6) To the extent that we offer or deliver locks with the specification "varied locking", this specification does not guarantee that locking might not be repetitive.
- (7) The purchaser shall arrange for inspection of the goods immediately upon receipt, either by himself or by a third party appointed as recipient of the goods by the purchaser, in order to establish that the goods are free of defects, corresponding to the order confirmation, and complete. The delivery or service is deemed accepted if no complaint is received by us within a maximum of 8 days following delivery, in writing or by fax. Should a defect not be recognized in the course of the inspection carried out upon the receipt of the goods, the same deadline of 8 days shall be applicable as from the time the defect is detected.
- (8) Goods rejected by the purchaser (or samples, if possible) are to be kept at our disposal for inspection or to be returned to us on request. If the claims are justified, the purchaser shall be entitled to receive compensation for the costs incurred in connection with returning the goods. Should the purchaser fail to meet his obligations within a reasonable time frame set by us, or should the purchaser or external third parties make any changes to the rejected goods without our prior consent, any claims for damages will be forfeited.
- (9) We shall be entitled to decide, at our own discretion, whether to mend the rejected goods or to replace them with flawless substitutes.
- (10) If the supplementary performance entails disproportionately high costs, we shall be entitled to refuse it, in which case the purchaser is free to withdraw from the contract or demand abatement of the purchasing price. If supplementary performance is feasible and does not entail disproportionately high costs, but we fail to meet our contractual obligation within an appropriate period of time, the purchaser shall set a final deadline within which we are to comply with our contractual obligations. Following expiration of such deadline, the purchaser shall be entitled to demand abatement of the purchasing price, to withdraw from the contract or to commission a third party with the repair works at our cost. We shall not be obliged to bear any additional costs incurred by the transportation of the goods to a different location, be it the purchaser's head office or branches, unless this corresponds to the intended use of the goods, which we were made aware of.
- (11) We shall accept liability for claims for damages asserted on the part of the purchaser in line with applicable law, provided we are charged with intent or gross negligence on our part or on the part of our legal representatives or our auxiliary persons. If no intent is given, our liability shall be limited to the typical, foreseeable damages.
- (12) We shall accept liability in line with applicable law for the violation of cardinal duties on our part or on the part of our legal representatives or our auxiliary persons. However, liability shall be limited to the typical, foreseeable damages.
- (13) Statutory liability for damages incurred to a person's life, body or well-being, as well as liability in line with the Product Liability Act shall remain unaffected by the aforementioned provisions. However, it shall be incumbent upon the purchaser to communicate the information provided by us on the respective goods (product information and intended use, improper use, product capacity, maintenance, information and instruction duty) to his customer and to observe such information vis-à-vis his customer and to commit his customers to do the same vis-à-vis his customers in turn. Otherwise our liability shall be excluded to the extent that is legally admissible.
- (14) To the extent that this is legally admissibly, we exclude all further liability for claims no matter for what reason. This applies in particular for claims arising from culpa in comprehendo, other breaches of duty or tort action according to § 823 BGB (~ German Civil Code) as well as for lost profit and other material damages. § 444 BGB (~ German Civil Code) shall remain unaffected.  
 We are by no means bound by recourse law to any agreements made between the purchaser and his customer that are beyond legal liability claims. To the extent that our liability is excluded or limited, the same shall be applicable for any personal liability on the part of our legal representative, staff and auxiliary persons.
- (15) Unless otherwise stipulated by relevant, conclusive law, our contractual and noncontractual liability (also from tort law) shall be limited to the amount of our insurance cover:  
 EUR 2,555,000 for material damages  
 EUR 51,000 for financial losses

#### XI. Retention of Title

- (1) All deliveries are executed subject to retention of title. All goods delivered shall remain our property until all claims vis-à-vis the purchaser have been settled.
- (2) If the purchaser uses the goods supplied by us for the processing of a new object, such processing shall be effected on our behalf without any obligations on our part. The purchaser stores the goods on our behalf. The acquisition of property on the part of the purchaser according to § 950 BGB (~ German Civil Code) shall be excluded. If the goods are processed together with other goods not delivered by us, we shall acquire partial property of the new object, in proportion to the value of the goods delivered by us and the other goods at the time of processing. The new object shall be deemed subject to retention of title within the meaning of these Terms.
- (3) The right to sell the goods subject to retention of title in ordinary business transactions shall be limited to purchasers who are also resellers. The purchaser herewith assigns his claims from reselling the goods subject to retention of title to us, the amount being equivalent to the value of the goods subject to retention of title; for the sale of goods processed together with other goods not delivered by us, or for other sale at a total price, the amount shall be calculated on the basis of the provisions of paragraph 3 above. If the goods subject to retention of title are integrated as integral parts into a third party construction project, the purchaser herewith assigns his claims against the third party or the party concerned to us, the amount being equivalent to the value of the goods subject to retention of title. If we are partial owners of the goods subject to retention of title, the assignment of claims shall be limited to the amount that is equivalent to the value of our share of the joint property. If the purchaser is entitled to create a cautionary mortgage in accordance with § 648 BGB (~ German Commercial Code), this claim shall be assigned to us to the amount that corresponds to the value of the goods subject to retention of title. The value of the goods subject to retention of title in this sense represents the value of our total receivables, including incidental claims (in particular cost and interest), plus a 20% cautionary surcharge. We herewith accept all aforementioned assignments and agree to all transfers of claims. We shall establish the rank of a partial amount that has been assigned in connection with the total receivables accruing to the purchaser.
- (4) The purchaser shall only be authorized to sell or install the goods subject to retention of title with the proviso that all payment, wage or other compensation requests according to paragraph 3 are assigned to us. The purchaser shall not be authorized to dispose of the goods subject to retention of title in any other manner (including pledging and cautionary assignment) or to dispose of the claims that have been or are to be assigned to us according to paragraph 3 in any other manner (including assignment, cautionary assignment and pledging).
- (5) We conditionally authorize the purchaser to collect the receivables from the sale of the goods, the wage requests or other compensation claims. The purchaser thus acts as debt collector on our behalf and shall submit all amounts collected up to the amount of our receivables (including incidental claims, such as costs and interest). We shall refrain from making use of our authority to collect debts as long as the purchaser continues to meet his payment obligations. If requested to do so, the purchaser shall disclose to us the debtors of the claims that have been assigned and shall announce the assignment to them. We are herewith authorized to announce the assignment to the debtors on the purchaser's behalf.
- (6) In case of garnishment or other third party access to the goods subject to retention of title, the purchaser shall notify us without undue delay and, if required, initiate intervention that cannot be delayed, immediately and at his own expense.
- (7) If the value of the securities granted to us exceeds the value of our receivables by more than 20%, we shall be obliged, at the purchaser's request, to transfer or release securities in that respect. We shall determine the securities to be transferred or released at our own discretion. Once the full amount of all receivables from the business transaction has been settled.

#### XII. Lien, Set-off and Cession

- (1) Lien shall be excluded if the purchaser is obliged to make payment in advance; for the rest it shall only be admissible to the extent that it is based on the same contractual agreement.
- (2) The purchaser may only set off indisputable or legally established claims.
- (3) The purchaser's cession of any claims held against us to third parties requires our express prior consent.

#### XIII. Patents

If production of the goods is based on information, drawings or sketches provided by the purchaser, it shall be incumbent upon the purchaser to ensure that no third party patent or other trademark rights are infringed. Our liability is excluded in the legal relationship to the purchaser. The purchaser shall indemnify us from any third party claims and shall reimburse all costs incurred in connection with our defence against such third party claims.

#### XIV. Place of Performance, Jurisdiction and Applicable Law

- (1) The place of performance shall be in Heiligenhaus.
- (2) The legal venue for all claims arising to the Parties from this agreement, including action on a bill of exchange or a cheque, shall be the competent local court at the location of our head office. We may also choose to file action at the competent local court at the purchaser's location.
- (3) The legal relationship with the purchaser shall be exclusively based on the jurisdiction of the Federal Republic of Germany. The execution of the United Nation Convention of 11 April 1980 on Contracts of the International Sale of Goods (CISG) shall be excluded.

1

2

3

4

5

6

7

8

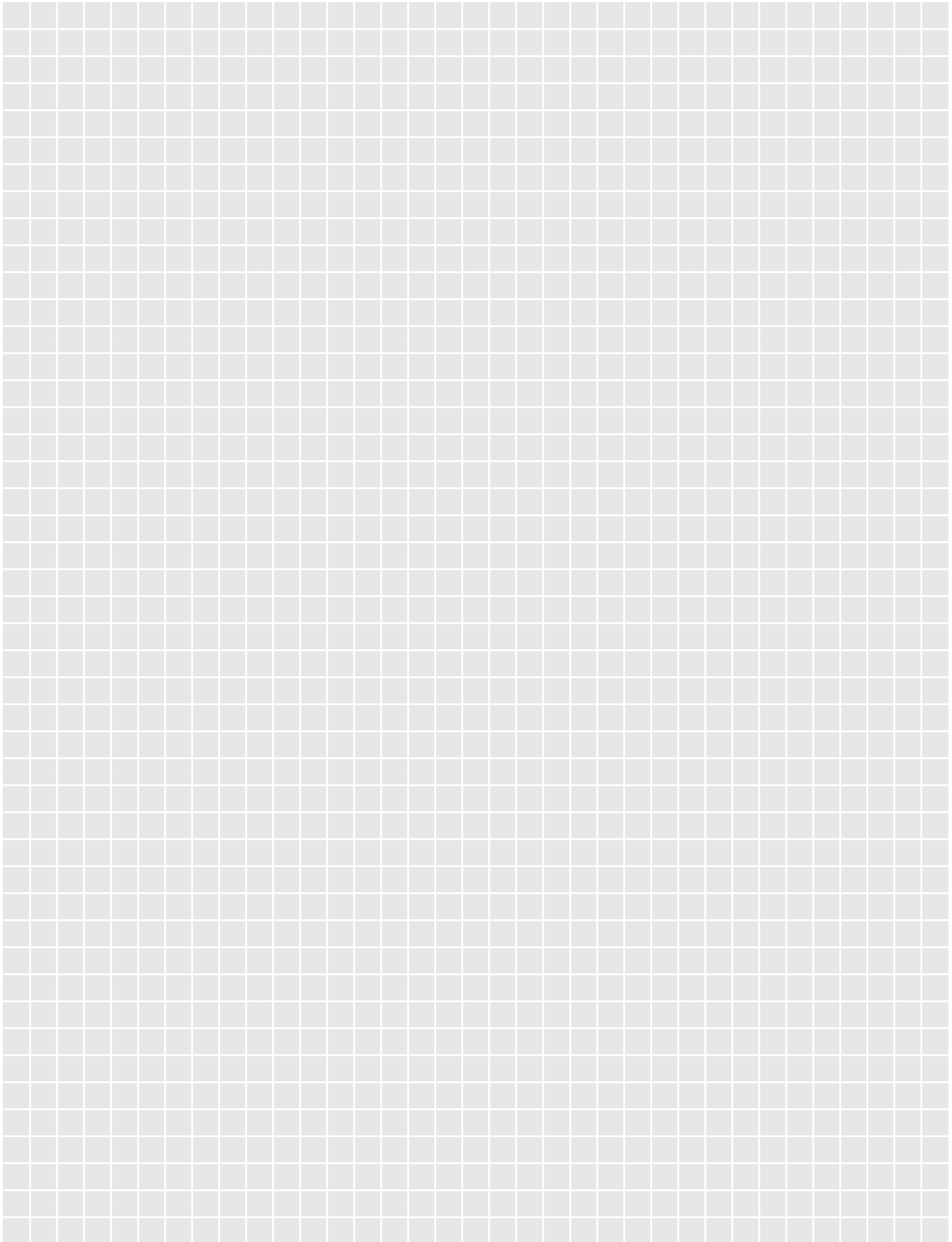
9

i

## Notes

A large grid of graph paper for taking notes, consisting of 20 columns and 30 rows of small squares.

## Notes



## Hardware for windows and facades

Standard window hardware, fanlight opening systems as well as special solutions for facade windows made of aluminium- or steel profiles are the range of WSS.

Nowadays, modern designed facades have not only to represent the building, but also to be energy-saving and sustainable.

As a developing and producing company, WSS stands for high-quality and supplies system solutions for facade constructions among other things.

### Content of the catalogue FK 1

- Standard window hardware
- Fanlight opening systems
- Special opening solutions



## Locks and hardware for all glass doors

Glass is a special material for the design of interior rooms and entrance areas. Openness and transparency. Free view and the impression of largeness. Closing rooms, without separating them, that sets glass.

More than 50 years experience with glass door hardware makes WSS a specialist for the design of all glass door hardware.

WSS provides the suitable solution for your interior glass doors or system solutions.

### Content of the catalogue GK 1

- Interior glass door hardware
- Exterior glass door hardware