

General information		
	■ Frequently asked questions (FAQ)	416
Cremona bolts		
	■ Concealed rods	417
	■ Surface-mounted rods	427
Flush bolts		
	■ Tubular flush bolts	433
	■ U-shape flush bolts	434
	■ With front plate	435
	■ Without front plate	438
Latch bolts		
	■ Gear boxes	441
	■ Latch bolt	442
Barrel bolts		
	■ To weld-on	443
	■ To screw-on	444
	■ Roller locking bolts	444
Lever handles		
	■ One-sided	445
	■ For chute cover	453
Finger protection devices	■ Technical product information	454
	■ Rollosystem	455
	■ Profiles	455



1



2



3



4



5



6



7



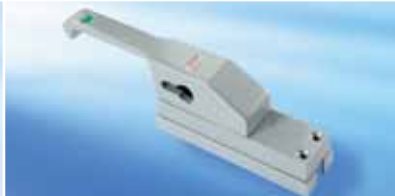
8



9



i



Surface mounted or concealed.
Cremone bolts for any demand.

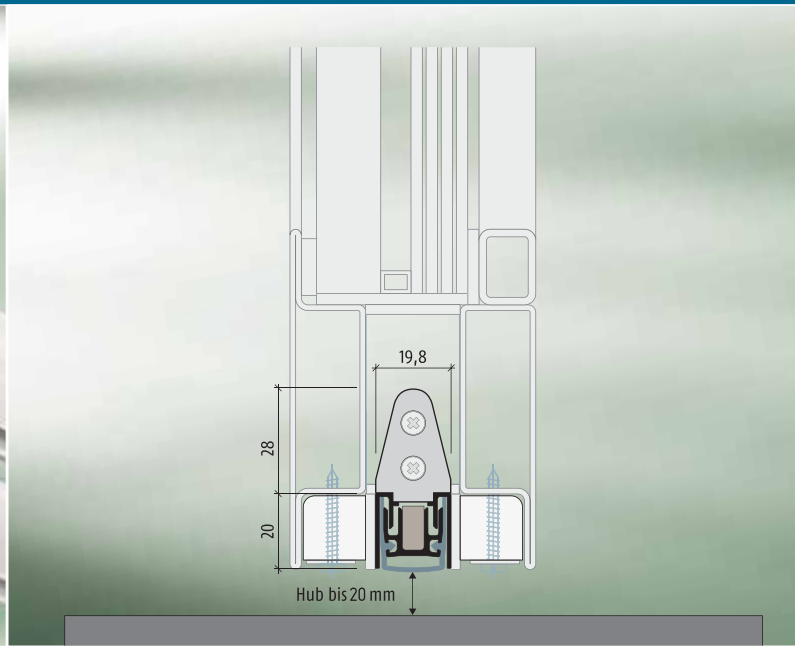
- with visible or concealed fixing
- stainless steel, brass or light alloy
- also as lockable version
- wide range of accessories available

The huge variety of models made from different materials enables the solution for any problem concerning cremone bolts.

With fold lever or square-follower.
Concealed locking.

- 20 mm maximum travel
- displaced rod connectors up to 65 mm backset
- single- and double-sided acting
- Actuation by light alloy fold lever or 8 mm square-follower

The maximum stroke of 20 mm guarantees a safe locking and prevents the distortion of the door.



No chance for sound and smoke.

For sound-, smoke- and fire resistant doors

- right and left usable
- maximum tightening height 16 mm
- with one- and both-sided release
- up to 125 mm cuttable by customer

Private households

- patented version for tighter doors
- right and left usable
- maximum tightening height 15 mm
- simple pre-installation for time saving installation on-site
- easy installation - also on sliding doors

Due to the both-sided release of the floor seals, the grinding area is reduced about approx. 80 %, which means a lower abrasion and higher durability.

Keeps everything tight.

- for sound-, smoke- and fire resistant doors
- parallel lowering of the whole leaf width
- Parallel lowering on the whole leaf-width
- maximum tightening up to 20 mm
- one-sided release on hinge-side
- up to 125 mm cuttable by customer
- Heavy-duty silicone-profile

The maximum tightening height of 20 mm allows the use of these floor seals also when there are large floor ducts.

1

Frequently asked questions (FAQ).

- **Where are flush-/cremone bolts used?**

Flush-/cremone bolts are used to lock the passive leaf of double-leaf doors.

- **What has to be considered while installation of flush- and cremone bolts?**

In order to avoid locking blockages and damages, you have to look after the alignment of the hardware. The ends of the rods should additionally be beveled. By using floor bushes, the ideal locking to the floor is ensured.



- **Which guidelines must be kept in mind for usage of floor seals?**

The guidelines of the system manufacturer must be considered when using door seals.



- **Are floor seals cuttable to any length?**

It is possible to shorten the lengths, acc. to the manufacturer's guidelines, for the different types.

- **What is a safety catch?**

A safety catch is a passive-leaf locking device with a square bar and a springy latch on a full frame double-leaf door. The operation is done by a gear-box on the door leaf.



2

3

4

5

6

7

8

9

i

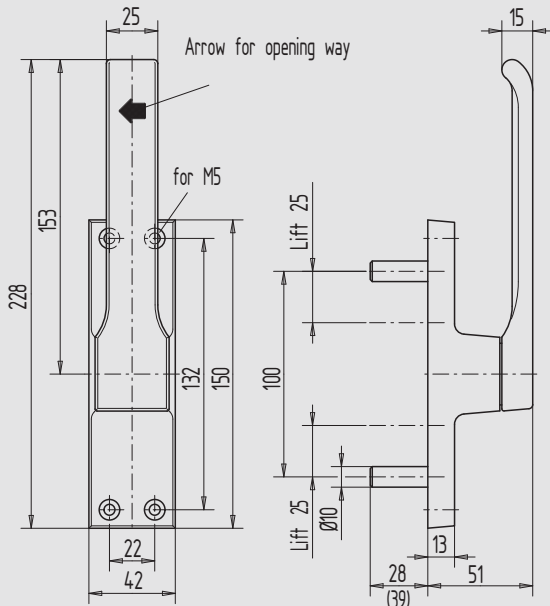


Illustration shows cremone bolt turning to the left

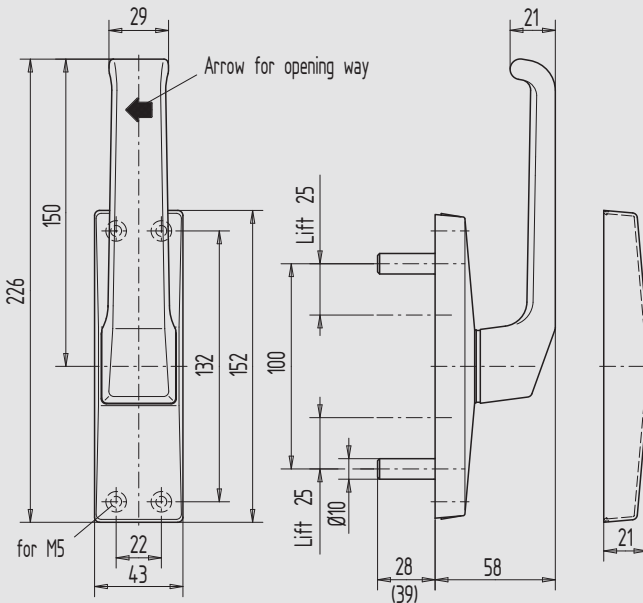


Illustration shows cremone bolt turning to the left

Cremone bolt, visible screwing

- stroke 25 mm
- bolt 28 mm protruding

Art.-no.	DIN direction	Material/Surface
07.100.2800.112	right rotating	Aluminium, E4/C-0 anodized
07.100.2800.152	right rotating	Aluminium, E4/C-34 anodized
07.100.2800.230	right rotating	Aluminium, silver powder-coated
07.100.2800.250	right rotating	Aluminium, RAL 9010 powder-coated
07.100.2800.255	right rotating	Aluminium, RAL 9016 powder-coated
07.100.2800.299	right rotating	Aluminium, special surface
07.101.2800.112	left rotating	Aluminium, E4/C-0 anodized
07.101.2800.152	left rotating	Aluminium, E4/C-34 anodized
07.101.2800.230	left rotating	Aluminium, silver powder-coated
07.101.2800.250	left rotating	Aluminium, RAL 9010 powder-coated
07.101.2800.255	left rotating	Aluminium, RAL 9016 powder-coated
07.101.2800.299	left rotating	Aluminium, special surface

Special Cremone bolt also with 39 mm bolt available.

Accessories:

Rod connectors and round rod see [page 427](#)
Guiding-/floor bushes and floor closing hutch see [page 428](#)

Cremone bolt, concealed screwing

- with cover cap
- stroke 25 mm
- bolt 28 mm protruding

Art.-no.	DIN direction	Material/Surface
07.102.2800.112	right rotating	Aluminium, E4/C-0 anodized
07.102.2800.152	right rotating	Aluminium, E4/C-34 anodized
07.102.2800.250	right rotating	Aluminium, RAL 9010 powder-coated
07.102.2800.255	right rotating	Aluminium, RAL 9016 powder-coated
07.102.2800.299	right rotating	Aluminium, special surface
07.103.2800.112	left rotating	Aluminium, E4/C-0 anodized
07.103.2800.152	left rotating	Aluminium, E4/C-34 anodized
07.103.2800.250	left rotating	Aluminium, RAL 9010 powder-coated
07.103.2800.255	left rotating	Aluminium, RAL 9016 powder-coated
07.103.2800.299	left rotating	Aluminium, special surface

Special Cremone bolt also with 39 mm bolt available.

Accessories:

Rod connectors and round rod see [page 427](#)
Guiding-/floor bushes and floor closing hutch see [page 428](#)

1

2

3

4

5

6

7

8

9

i



1

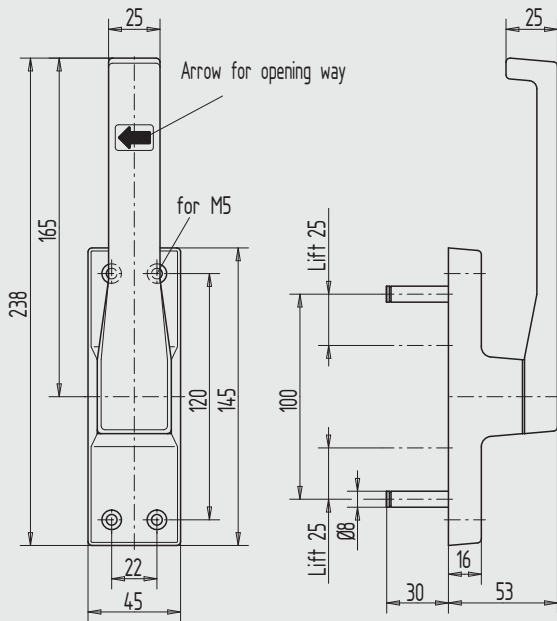


Illustration shows cremone bolt turning to the left

2

3

4

5

6

7

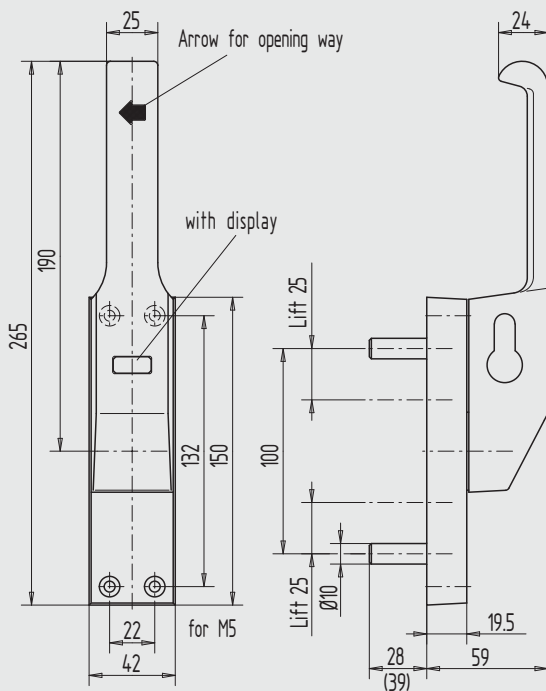


Illustration shows cremone bolt turning to the left

8

9

i

Cremone bolt, stainless steel

- stroke 25 mm
- bolt 30 mm protruding

Art.-no.	Direction	Material/Surface
07.104.3000.426	right rotating	Stainless Steel V2A, matt brushed
07.105.3000.426	left rotating	Stainless Steel V2A, matt brushed

Special Cremone bolt also with 39 mm bolt available.

Accessories:

Rod connectors and round rod see **page 427**
Guiding-/floor bushes and floor closing hutch see **page 428**

Cremone bolt, lockable

- stroke 25 mm
- bolt 28 mm protruding
- prepared for profile-short-single cylinder
- with display, red = locked / green = released

Art.-no.	Direction	Material/Surface
07.106.2800.112	right rotating	Aluminium, E4/C-0 anodized
07.106.2800.152	right rotating	Aluminium, E4/C-34 anodized
07.106.2800.230	right rotating	Aluminium, silver powder-coated
07.106.2800.250	right rotating	Aluminium, RAL 9010 powder-coated
07.106.2800.255	right rotating	Aluminium, RAL 9016 powder-coated
07.106.2800.299	right rotating	Aluminium, special surface
07.107.2800.112	left rotating	Aluminium, E4/C-0 anodized
07.107.2800.152	left rotating	Aluminium, E4/C-34 anodized
07.107.2800.230	left rotating	Aluminium, silver powder-coated
07.107.2800.250	left rotating	Aluminium, RAL 9010 powder-coated
07.107.2800.255	left rotating	Aluminium, RAL 9016 powder-coated
07.107.2800.299	left rotating	Aluminium, special surface

Special Cremone bolt also with 39 mm bolt as well as with lever position "below", at drawn-in rods, lockable available.

Accessories:

Rod connectors and round rod see **page 427**
Guiding-/floor bushes and floor closing hutch see **page 428**
Profile-short-single cylinder **page 195**

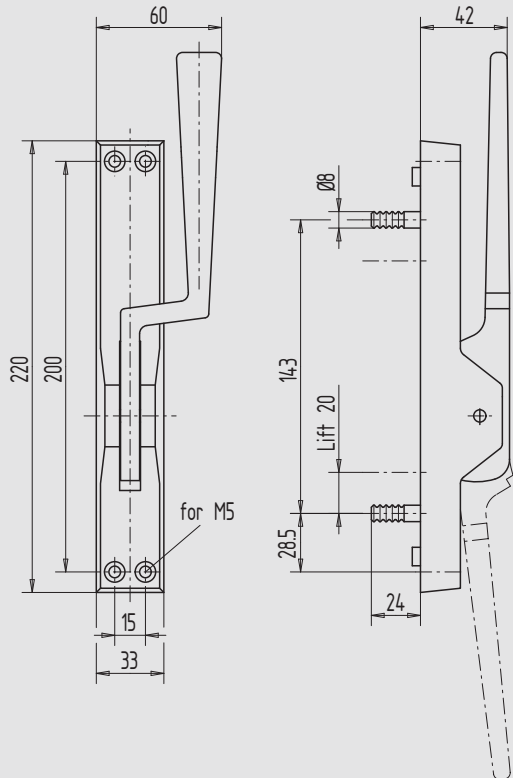
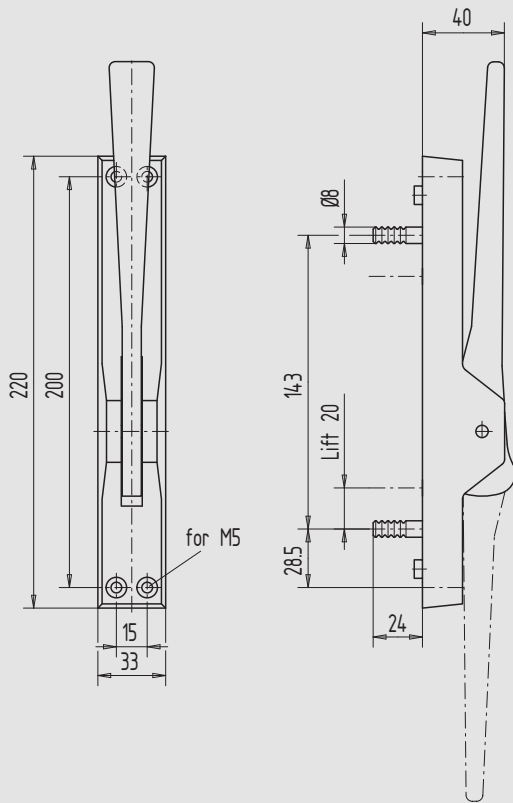


Illustration shows cropped lever to the right.

Cremone bolt, straight lever

- aluminium or brass
- stroke 20 mm
- bolt 24 mm protruding

Art.-no.	Material/Surface
07.108.2400.112	Aluminium, E4/C-0 anodized
07.108.2400.152	Aluminium, E4/C-34 anodized
07.108.2400.230	Aluminium, silver powder-coated
07.108.2400.250	Aluminium, RAL 9010 powder-coated
07.108.2400.255	Aluminium, RAL 9016 powder-coated
07.108.2400.299	Aluminium, special surface
07.108.2400.316	Brass, polished
07.108.2400.325	Brass, matt nickel plated
07.108.2400.326	Brass, matt brushed

Special Cremone bolt also with 39 mm bolt available.

Accessories:

Rod connectors and round rod see [page 427](#)
Guiding-/floor bushes and floor closing hutch see [page 428](#)

Cremone bolt, cropped lever

- aluminium or brass
- stroke 20 mm
- bolt 24 mm protruding

Art.-no.	Direction
07.110.2400.---	right cropped
07.111.2400.---	left cropped

Surface codes	Material/Surface
---.112	Aluminium, E4/C-0 anodized
---.152	Aluminium, E4/C-34 anodized
---.230	Aluminium, silver powder-coated
---.250	Aluminium, RAL 9010 powder-coated
---.255	Aluminium, RAL 9016 powder-coated
---.299	Aluminium, special surface
---.316	Brass, polished
---.325	Brass, matt nickel plated
---.326	Brass, matt brushed

Special Cremone bolt also with 39 mm bolt available.

Accessories:

Rod connectors and round rod see [page 427](#)
Guiding-/floor bushes and floor closing hutch see [page 428](#)



1

2

3

4

5

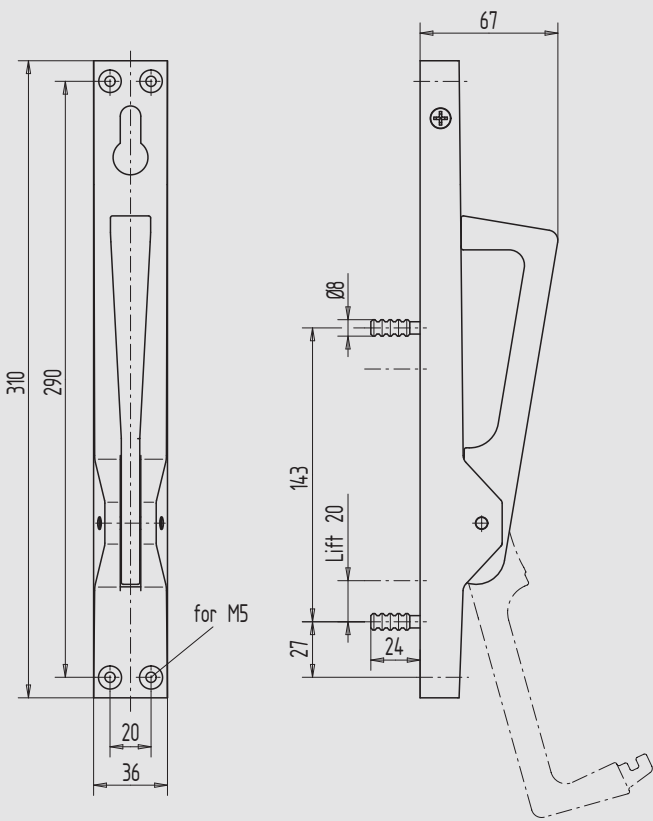
6

7

8

9

i



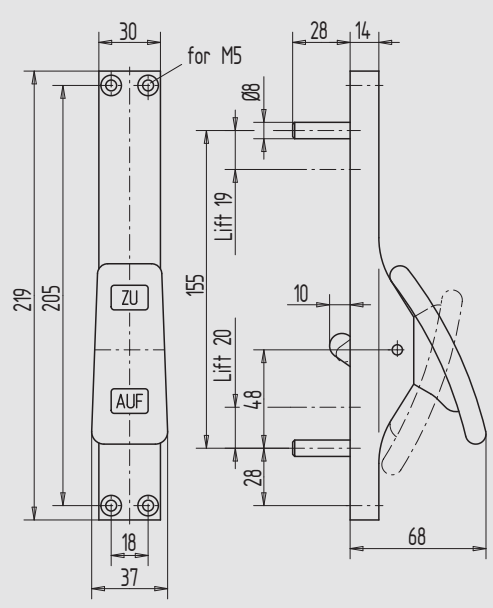
Cremone bolt, lockable

- aluminium or brass
- stroke 20 mm
- bolt 24 mm protruding
- prepared for profile-short-single cylinder

Art.-no.	Material/Surface
07.112.2400.112	Aluminium, E4/C-0 anodized
07.112.2400.152	Aluminium, E4/C-34 anodized
07.112.2400.230	Aluminium, silver powder-coated
07.112.2400.250	Aluminium, RAL 9010 powder-coated
07.112.2400.255	Aluminium, RAL 9016 powder-coated
07.112.2400.299	Aluminium, special surface
07.112.2400.316	Brass, polished
07.112.2400.325	Brass, matt nickel plated
07.112.2400.326	Brass, matt brushed

Special Cremone bolt also with 39 mm bolt available.

Accessories:
Rod connectors and round rod see [page 427](#)
Guiding-/floor bushes and floor closing hutch see [page 428](#)
Profile-short-single cylinder [page 195](#)

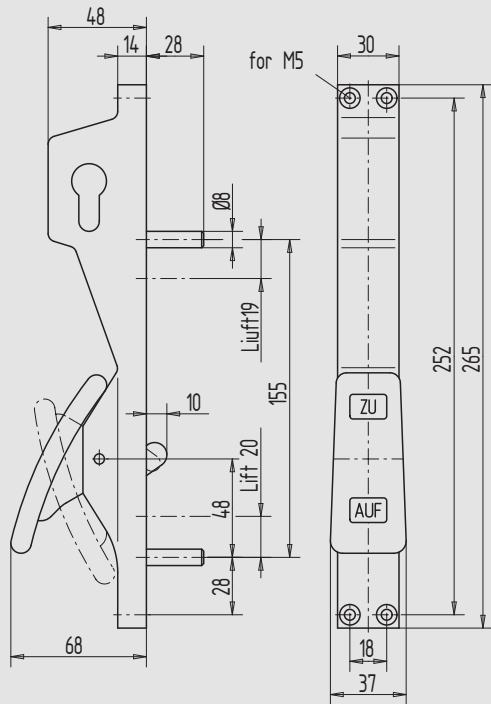


Cremone bolt

- bolt 28 mm protruding
- push plate with labelling "Auf" / "Zu"

Art.-no.	Material/Surface
07.113.2800.112	Aluminium, E4/C-0 anodized
07.113.2800.152	Aluminium, E4/C-34 anodized
07.113.2800.250	Aluminium, RAL 9010 powder-coated
07.113.2800.255	Aluminium, RAL 9016 powder-coated
07.113.2800.299	Aluminium, special surface

Accessories:
Rod connectors and round rod see [page 427](#)
Guiding-/floor bushes and floor closing hutch see [page 428](#)



Cremone bolt, lockable

- bolt 28 mm protruding
- prepared for profile-short-single cylinder
- push plate with labelling "Auf" / "Zu"

Art.-no.	Material/Surface
07.114.2800.112	Aluminium, E4/C-0 anodized
07.114.2800.152	Aluminium, E4/C-34 anodized
07.114.2800.250	Aluminium, RAL 9010 powder-coated
07.114.2800.255	Aluminium, RAL 9016 powder-coated
07.114.2800.299	Aluminium, special surface

Accessories:

Rod connectors and round rod see [page 427](#)
Guiding-/floor bushes and floor closing hutch see [page 428](#)
Profile-short-single cylinder [page 190](#)

1

2

3

4

5

6

7

8

9

i



1

2

3

4

5

6

7

8

9

i

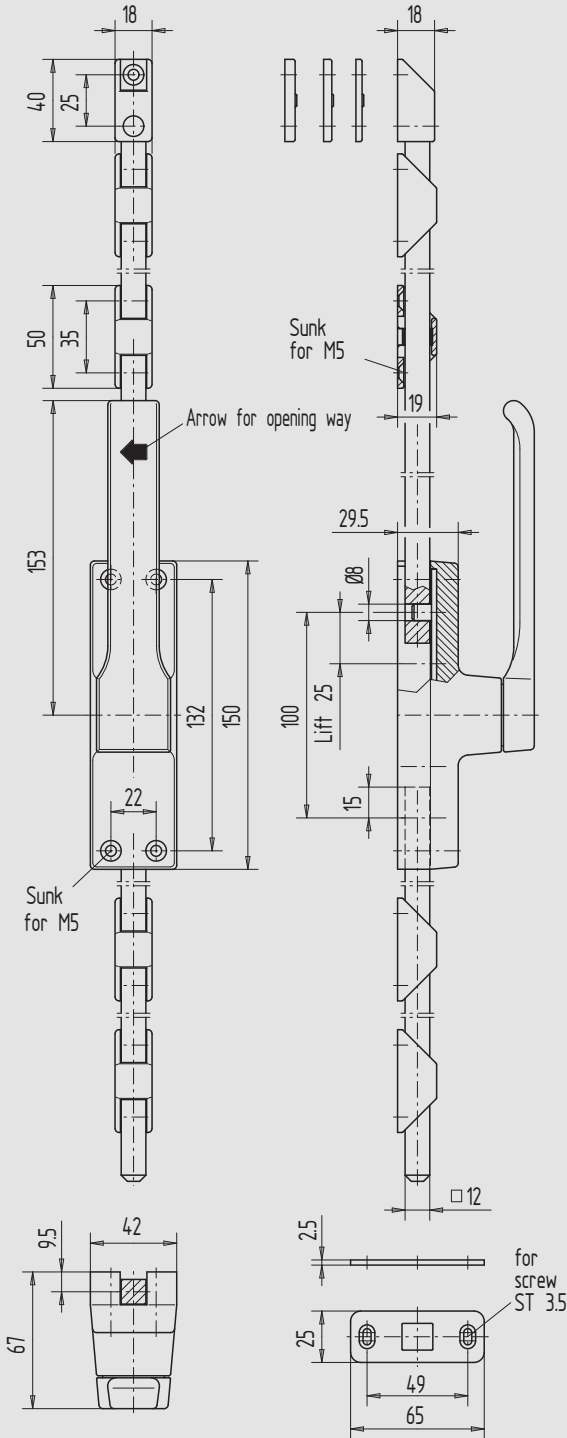


Illustration shows cremone bolt turning to the left

Cremone bolt

- face-mounted lock
- for 12 mm aluminium square rods
- with:**
- 4 rod guides and PVC-guide-pieces
- 1 upper locking piece
- 1 Locking plate
- 3 PVC-distance plates (without square rod)

Art.-no.	DIN direction	Material/Surface
07.150.0000.230	right rotating	Aluminium, silver powder-coated
07.150.0000.240	right rotating	Aluminium, dark-bronze powder-coated
07.150.0000.250	right rotating	Aluminium, RAL 9010 powder-coated
07.150.0000.255	right rotating	Aluminium, RAL 9016 powder-coated
07.150.0000.299	right rotating	Aluminium, special surface
07.151.0000.230	left rotating	Aluminium, silver powder-coated
07.151.0000.240	left rotating	Aluminium, dark-bronze powder-coated
07.151.0000.250	left rotating	Aluminium, RAL 9010 powder-coated
07.151.0000.255	left rotating	Aluminium, RAL 9016 powder-coated
07.151.0000.299	left rotating	Aluminium, special surface

Accessories:

Aluminium square rod [page 425](#)



1

2

3

4

5

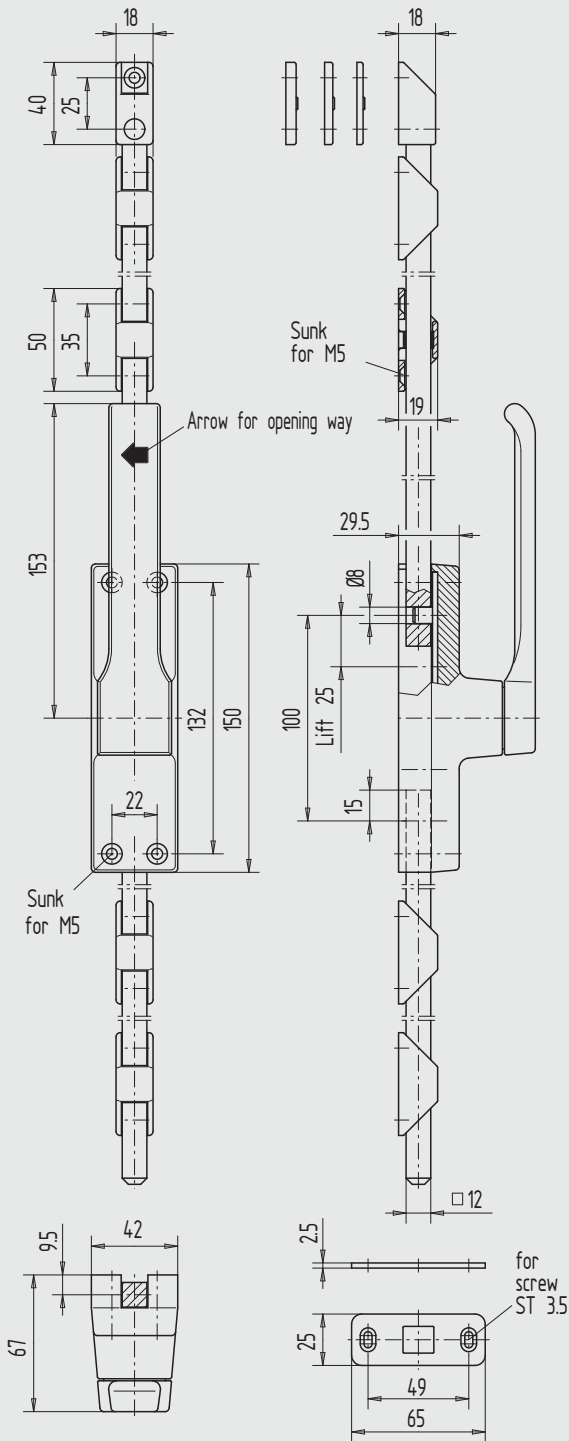
6

7

8

9

i



Cremone bolt

- face-mounted lock
- for 12 mm aluminium square rods
- with:**
 - 4 rod guides and PVC-guide-pieces
 - 1 upper locking piece
 - 1 Locking plate
 - 3 PVC-distance plates (without square rod)

Art.-no.	Direction	Material/Surface
07.150.0000.230	right rotating	Aluminium, silver powder-coated
07.150.0000.240	right rotating	Aluminium, dark-bronze powder-coated
07.150.0000.250	right rotating	Aluminium, RAL 9010 powder-coated
07.150.0000.255	right rotating	Aluminium, RAL 9016 powder-coated
07.150.0000.299	right rotating	Aluminium, special surface
07.151.0000.230	left rotating	Aluminium, silver powder-coated
07.151.0000.240	left rotating	Aluminium, dark-bronze powder-coated
07.151.0000.250	left rotating	Aluminium, RAL 9010 powder-coated
07.151.0000.255	left rotating	Aluminium, RAL 9016 powder-coated
07.151.0000.299	left rotating	Aluminium, special surface

Accessories:

Aluminium square rod [page 425](#)



1

2

3

4

5

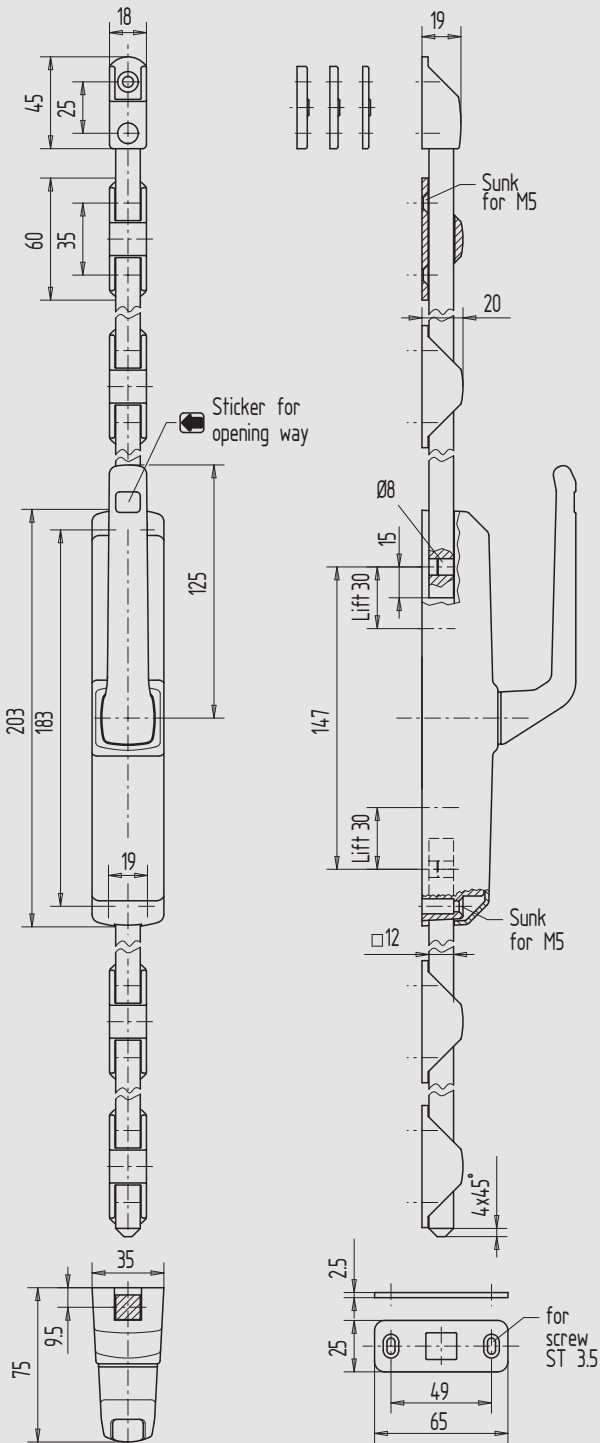
6

7

8

9

i



Cremone bolt, concealed screwing

- face-mounted lock
- for 12 mm aluminium square rods
- with cover cap
- right and left hand usable

with:

- 4 rod guides and PVC-guide-pieces
- 1 upper locking piece
- 1 Locking plate
- 3 PVC-distance plates (without square rod)

Art.-no.	Direction	Material/Surface
07.154.0000.730	right rotating	Zinc Die Casting, silver powder-coated
07.154.0000.740	right rotating	Zinc Die Casting, dark-bronze powder-coated
07.154.0000.750	right rotating	Zinc Die Casting, RAL 9010 powder-coated
07.154.0000.755	right rotating	Zinc Die Casting, RAL 9016 powder-coated
07.154.0000.780	right rotating	Zinc Die Casting, yellow chromated
07.154.1000.730	left rotating	Zinc Die Casting, silver powder-coated
07.154.1000.740	left rotating	Zinc Die Casting, dark-bronze powder-coated
07.154.1000.750	left rotating	Zinc Die Casting, RAL 9010 powder-coated
07.154.1000.755	left rotating	Zinc Die Casting, RAL 9016 powder-coated
07.154.1000.780	left rotating	Zinc Die Casting, yellow chromated
Information	Material/Surface GD-Zn, yellow chromated for coating by customer convenient.	

Accessories:

Aluminium square rod **page 425**



Cremone bolt

- face-mounted lock
- for 12 mm aluminium square rods

with:

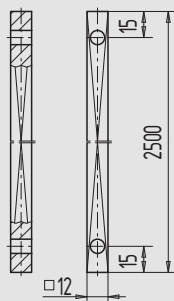
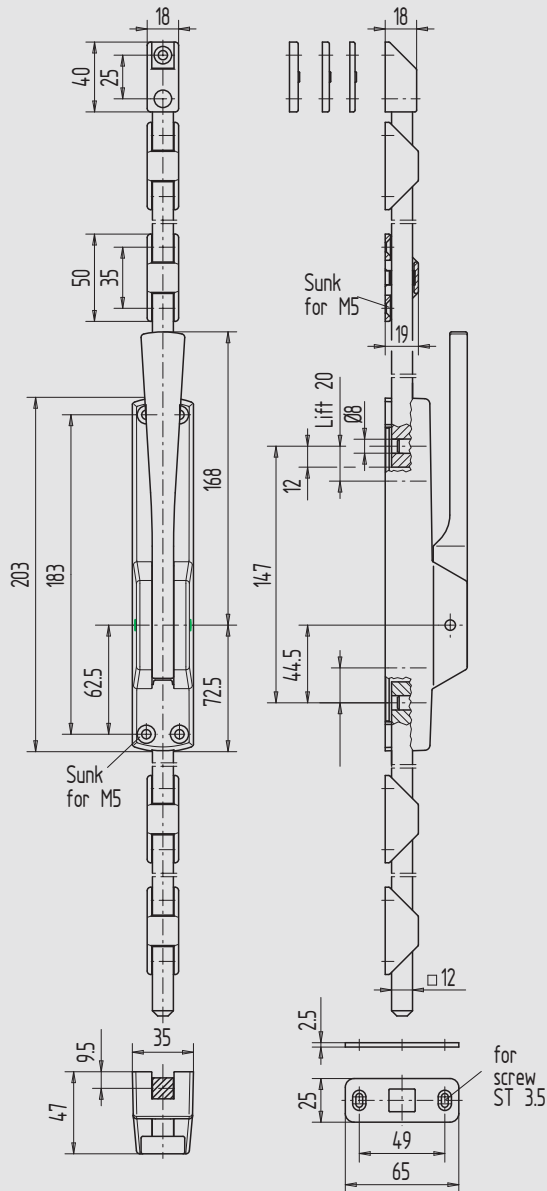
- 4 rod guides and PVC-guide-pieces
- 1 upper locking piece
- 1 Locking plate
- 3 PVC-distance plates (without square rod)

Art.-no.	Material/Surface
07.155.0000.730	Zinc Die Casting, silver powder-coated
07.155.0000.740	Zinc Die Casting, dark-bronze powder-coated
07.155.0000.750	Zinc Die Casting, RAL 9010 powder-coated
07.155.0000.755	Zinc Die Casting, RAL 9016 powder-coated
07.155.0000.780	Zinc Die Casting, yellow chromated

Information Material/Surface GD-Zn, yellow chromated for coating by customer convenient.

Accessories:

Aluminium square rod art.-no. 07.156... (see below)
Mounting angle for escape door hood



Aluminium square rod

- 12 mm square
- both-sided drilled
- length 2500 mm

Art.-no.	Material/Surface
07.156.0000.105	Aluminium, bright
07.156.0000.230	Aluminium, silver powder-coated
07.156.0000.240	Aluminium, dark-bronze powder-coated
07.156.0000.250	Aluminium, RAL 9010 powder-coated
07.156.0000.255	Aluminium, RAL 9016 powder-coated

suitable for:

Cremone bolt, on-laying rods see [page 422](#)

1

2

3

4

5

6

7

8

9

i



1

2

3

4

5

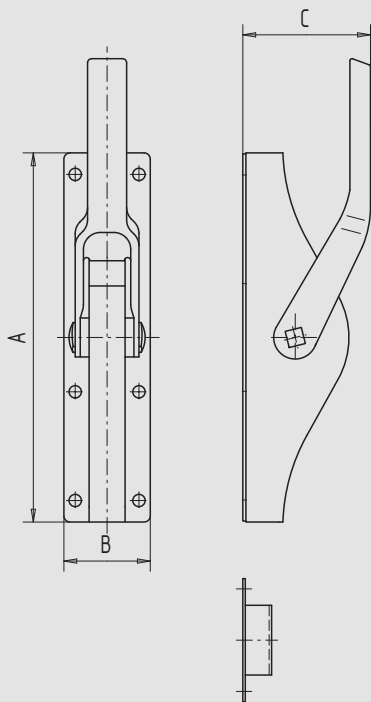
6

7

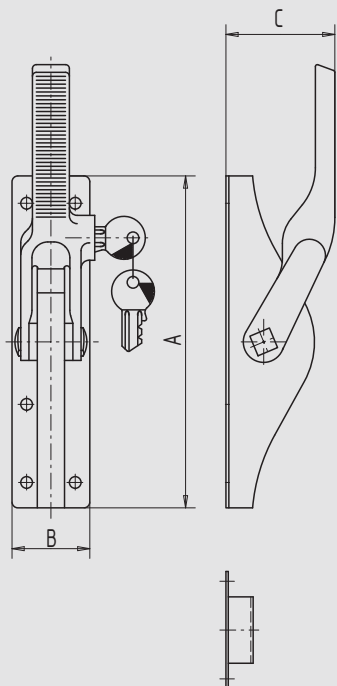
8

9

i



A	B	C	Square
170	35	48	10
180	40	58	13
180	40	58	14
252	55	67	16
280	60	85	19



A	B	C	Square
170	35	53	10
180	40	58	13
237	50	67	16
282	60	85	19

Cremone bolt

- face-mounted lock
- for square rods
- with plate and guiding loops

Art.-no.	for square rods	Quantity of guide loops	Material/Surface
07.180.0010.010	10	2	Steel, zinc-plated
07.180.0013.010	13	3	Steel, zinc-plated
07.180.0013.426	13	3	Stainless Steel V2A, matt brushed
07.180.0014.010	14	3	Steel, zinc-plated
07.180.0016.010	16	3	Steel, zinc-plated
07.180.0019.010	19	4	Steel, zinc-plated

Accessories:

- Square rod [page 431](#)
- Stone bush [page 431](#)

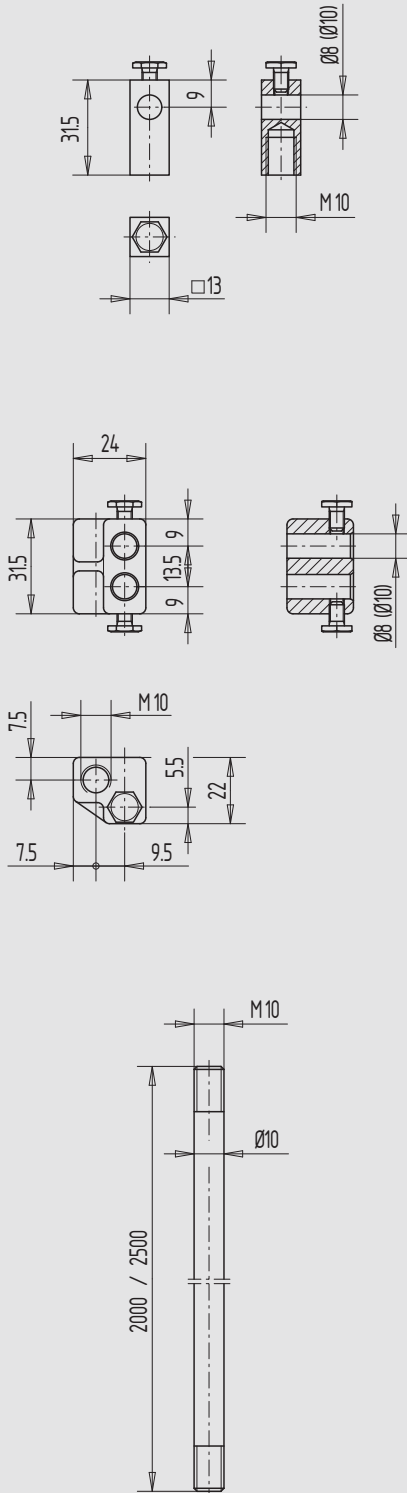
Cremone bolt, lockable

- face-mounted lock
- for square rods
- with plate and guiding loops
- with 2 keys

Art.-no.	for square rods	Quantity of guide loops	Material/Surface
07.181.0010.010	10	2	Steel, zinc-plated
07.181.0013.010	13	3	Steel, zinc-plated
07.181.0016.010	16	3	Steel, zinc-plated
07.181.0019.010	19	4	Steel, zinc-plated

Accessories:

- Square rod [page 431](#)
- Stone bush [page 431](#)



Rod connector

- inner thread M10 and adjustment screw M5
- drilling hole for 8 or 10 mm round bolt

Art.-no.	for bolt	Material/Surface
07.200.0008.010	8 mm Ø	Steel, zinc-plated
07.200.0010.010	10 mm Ø	Steel, zinc-plated

Rod connector

- inner thread M10 and adjustment screw M5
- drilling hole for 8 or 10 mm round bolt

Art.-no.	for bolt	Material/Surface
07.201.0008.010	8 mm Ø	Steel, zinc-plated
07.201.0010.010	10 mm Ø	Steel, zinc-plated

Round rod

- 10 mm diameter
- both sides with thread M10
- length 2000 or 2500 mm

Art.-no.	Length	Material/Surface
07.210.2000.010	2000	Steel, zinc-plated
07.210.2000.105	2000	Aluminium, bright
07.210.2000.114	2000	Aluminium, E6/C-0 anodized
07.210.2000.405	2000	Stainless Steel V2A, bright
07.210.2500.010	2500	Steel, zinc-plated
07.210.2500.105	2500	Aluminium, bright
07.210.2500.114	2500	Aluminium, E6/C-0 anodized
07.210.2500.405	2500	Stainless Steel V2A, bright

1

2

3

4

5

6

7

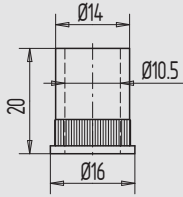
8

9

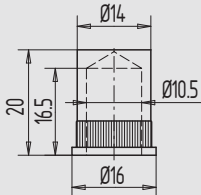
i



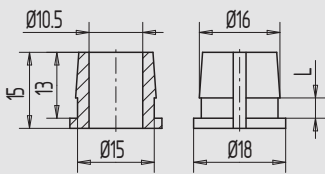
1



2

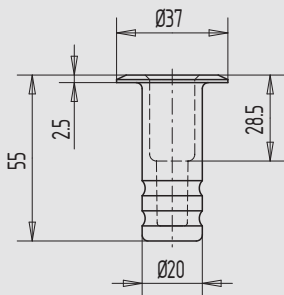


3



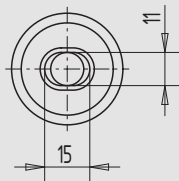
4

5

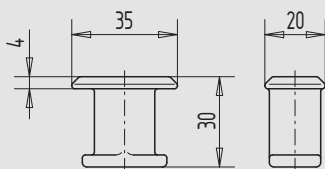


6

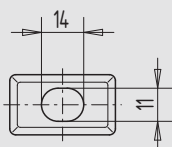
7



8



9



i

Guiding bush, open

■ for 10 mm round rod

Art.-no.	Material/Surface
10.761.0000.375	Brass, nickel plated

Guiding bush, closed

■ for 10 mm round rod

Art.-no.	Material/Surface
10.762.0000.375	Brass, nickel plated

Guiding bush , PVC, open

■ for 10 mm round rod

Art.-no.	L (Wall thickness)	Material/Surface
10.763.0003.505	3	PVC, nature
10.763.0004.505	4	PVC, nature

Floor bush

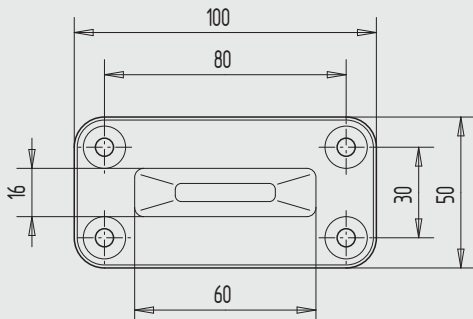
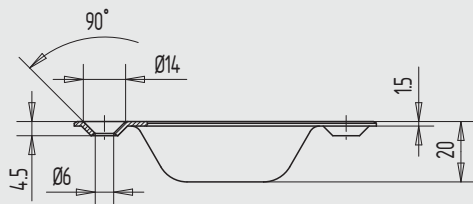
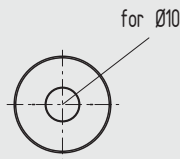
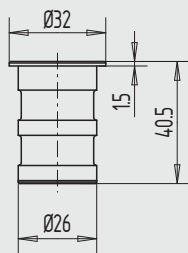
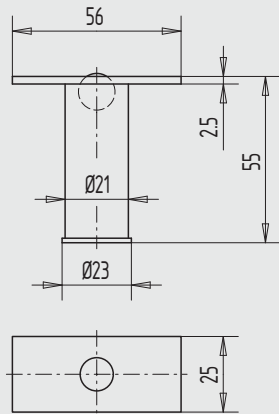
■ for 10 mm round rod

Art.-no.	Material/Surface
07.230.0000.310	Brass, zinc-plated

Floor bush

■ for 10 mm round rod

Art.-no.	Material/Surface
07.231.0000.305	Brass, bright



Floor bush

- for 10 mm round rod
- steel or brass plate
- with spring mounted ball as cover

Art.-no.	Plate
07.232.0000.010	Steel, zinc-plated
07.232.0000.376	Brass, velour nickel-plated

Floor bush

- for 10 mm round rod
- aluminium case
- with springy lock
- with cover plate, stainless steel matt brushed

Art.-no.	Material/Surface
07.233.0000.426	Stainless Steel V2A, matt brushed

Floor locking hutch

- for 10 mm round rod

Art.-no.	Material/Surface
07.234.0000.426	Stainless Steel V2A, matt brushed

1

2

3

4

5

6

7

8

9

i



1

2

3

4

5

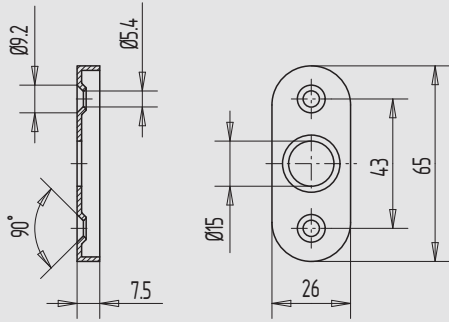
6

7

8

9

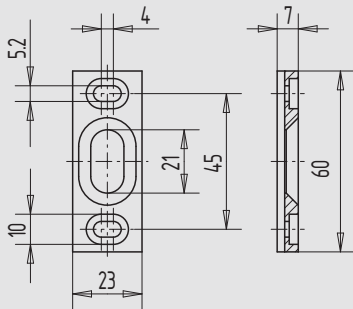
i



Cover rose

- for flush bolt with square follower

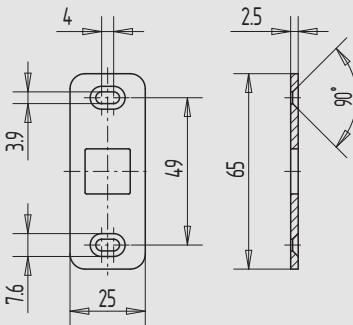
Art.-no.	Material/Surface
07.235.0000.112	Aluminium, E4/C-0 anodized



Locking plate, for 10 mm round rod

- to screw-on

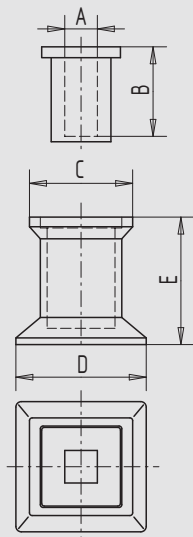
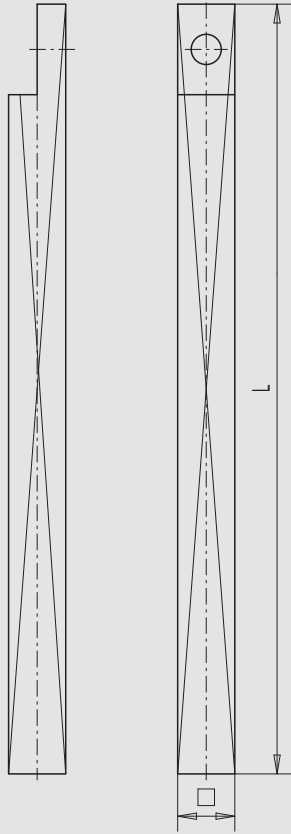
Art.-no.	Material/Surface
07.240.0000.112	Aluminium, E4/C-0 anodized



Locking plate, for 12 mm square rod

- to screw-on

Art.-no.	Material/Surface
07.241.0000.426	Stainless Steel V2A, matt brushed



A	B	C	D	E	Square
12	35	38	48	47	10
15	30	38	48	47	13
17	35	45	52	50	16
21	35	45	52	50	19

Square rod

- one-sided / both-sided notched and punched
- steel zinc plated

Art.-no.	Square	Length	released and punched
07.270.1000.010	9	1000	one-sided
07.270.1501.010	9	1500	both-sided
07.270.2001.010	9	2000	both-sided
07.271.1000.010	10	1000	one-sided
07.271.1250.010	10	1250	one-sided
07.271.1500.010	10	1500	one-sided
07.271.2501.010	10	2500	both-sided
07.272.1000.010	13	1000	one-sided
07.272.1250.010	13	1250	one-sided
07.272.1500.010	13	1500	one-sided
07.272.2501.010	13	2500	both-sided
07.273.1500.010	14	1500	one-sided
07.273.2501.010	14	2500	both-sided
07.274.1000.010	16	1000	one-sided
07.274.1250.010	16	1250	one-sided
07.274.1500.010	16	1500	one-sided
07.724.2000.010	16	2000	one-sided
07.274.2501.010	16	2500	both-sided
07.275.2501.010	19	2500	both-sided
07.275.3001.010	19	3000	both-sided

Stone bush

- with removable dirt-case
- floor-mounted

Art.-no.	Square	Material/Surface
07.280.0010.610	10	Malleable Cast Iron, zinc-plated
07.280.0013.610	13	Malleable Cast Iron, zinc-plated
07.280.0016.610	16	Malleable Cast Iron, zinc-plated
07.280.0019.610	19	Malleable Cast Iron, zinc-plated

1

2

3

4

5

6

7

8

9

i



1

2

3

4

5

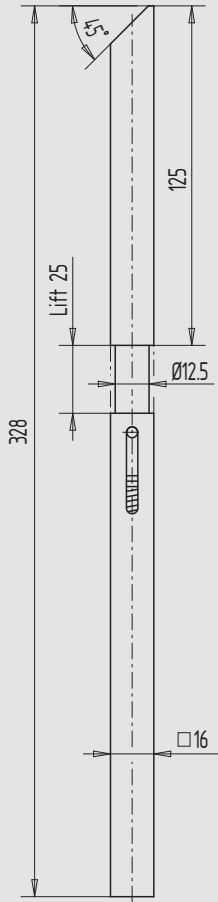
6

7

8

9

i



Rod head, springy

- for use in explosive rooms
- to weld-on to 16 mm square rods

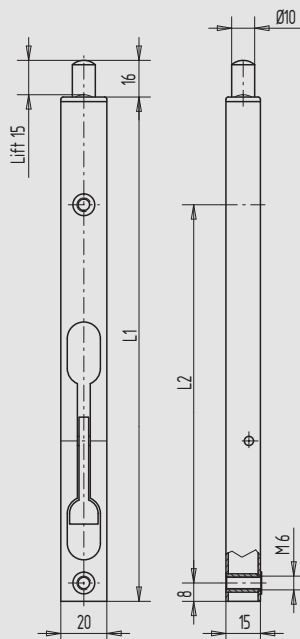
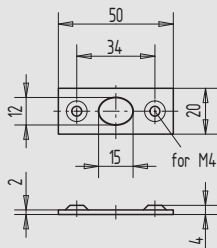
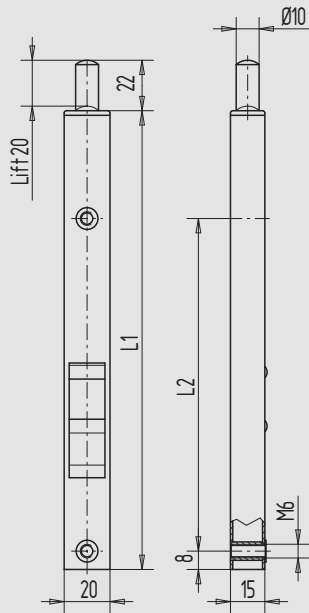
Art.-no.	Material/Surface
07.290.0000.010	Steel, zinc-plated

Tubular flush bolt

- 20 mm broad
- thread bushes M6
- with strike plate

Actuation by slider

Art.-no.	L1	L2	Material/Surface
07.300.0200.010	200	145	Steel, zinc-plated
07.300.0250.010	250	195	Steel, zinc-plated
07.300.0300.010	300	240	Steel, zinc-plated
07.300.0400.010	400	340	Steel, zinc-plated
07.300.0500.010	500	445	Steel, zinc-plated



Actuation by lever

Art.-no.	L1	L2	Material/Surface
07.301.0220.010	220	165	Steel, zinc-plated
07.301.0250.010	250	195	Steel, zinc-plated
07.301.0300.010	300	245	Steel, zinc-plated
07.301.0400.010	400	340	Steel, zinc-plated
07.301.0500.010	500	443	Steel, zinc-plated

1

2

3

4

5

6

7

8

9

i



WSS

Flush bolts

1

2

3

4

5

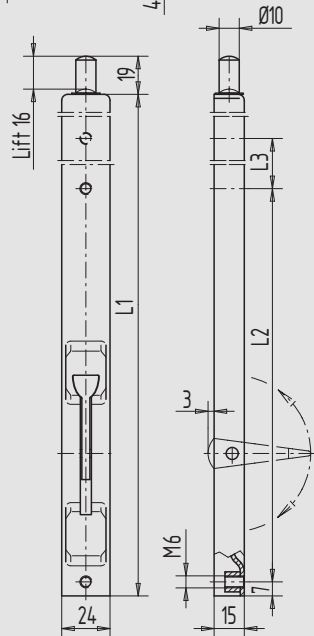
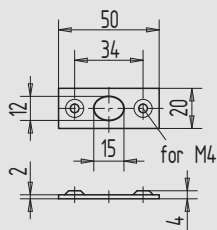
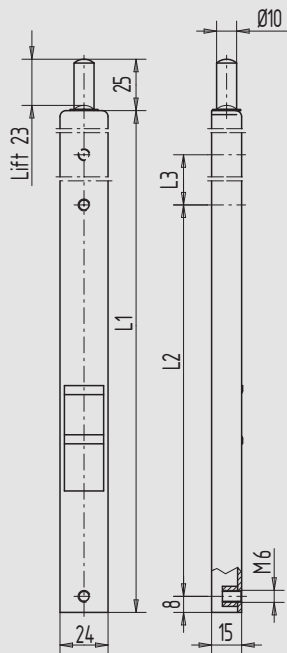
6

7

8

9

i



U-shape flush bolt

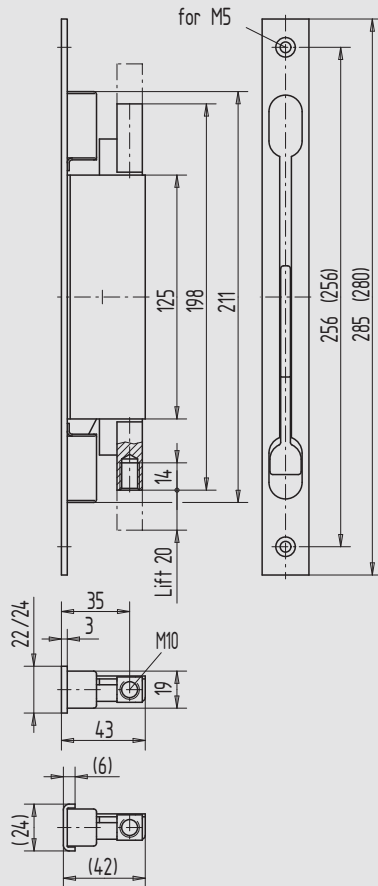
- 24 mm broad
- thread bushes M6
- with strike plate

Actuation by slider

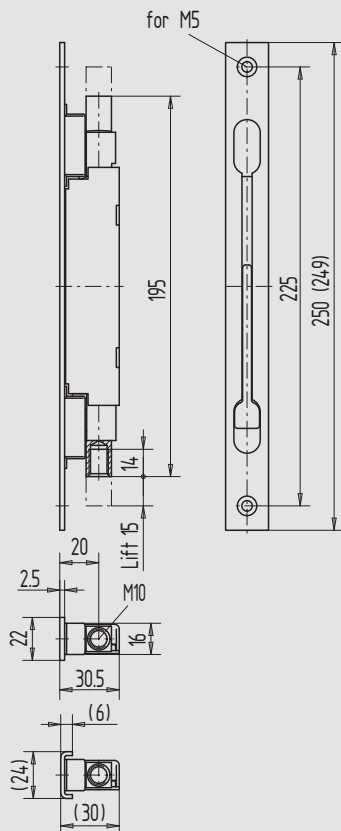
Art.-no.	L1	L2	L3	Material/Surface
07.320.0250.010	250	195	---	Steel, zinc-plated
07.320.0300.010	300	245	---	Steel, zinc-plated
07.320.0400.010	400	205	140	Steel, zinc-plated
07.320.0500.010	500	245	195	Steel, zinc-plated

Actuation by lever

Art.-no.	L1	L2	L3	Material/Surface
07.321.0220.010	220	165	---	Steel, zinc-plated
07.321.0250.010	250	195	---	Steel, zinc-plated
07.321.0300.010	300	245	---	Steel, zinc-plated
07.321.0400.010	400	205	140	Steel, zinc-plated
07.321.0500.010	500	245	200	Steel, zinc-plated



(...) = U-shape front plate



(...) = U-shape front plate

Flush bolt with front plate

- backset 35 mm
- stroke 20 mm
- steel zinc plated
- double-side acting
- with aluminium lever
- rod connectors M10
- front plate, angular

Art.-no.	Front plate dim.	Version	Front plate
07.340.0000.010	22 x 3	Flat front plate	Steel, zinc-plated
07.340.0000.426	22 x 3	Flat front plate	Stainless Steel V2A, matt brushed
07.340.0010.010	24 x 3	Flat front plate	Steel, zinc-plated
07.340.0010.426	24 x 3	Flat front plate	Stainless Steel V2A, matt brushed
07.340.0020.426	24 x 6	U-shape front plate	Stainless Steel V2A, matt brushed

Special Flush bolt also with displaced backset available. (38/40/44/50/54/57/60/65 mm)

Accessories:

Round rod [page 427](#)
Guiding-/floor bushes see [page 428](#)

Flush bolt with front plate

- backset 20 mm
- stroke 15 mm
- steel zinc plated
- double-side acting
- with aluminium lever
- rod connectors M10
- front plate, angular

Art.-no.	Front plate dim.	Version	Front plate
07.341.0000.010	22 x 2,5	Flat front plate	Steel, zinc-plated
07.341.0000.426	22 x 2,5	Flat front plate	Stainless Steel V2A, matt brushed
07.341.0020.426	24 x 6,0	U-shape front plate	Stainless Steel V2A, matt brushed

Special 'Flush bolt also with displaced backset available.

Accessories:

Round rod [page 427](#)
Guiding-/floor bushes see [page 428](#)



1

2

3

4

5

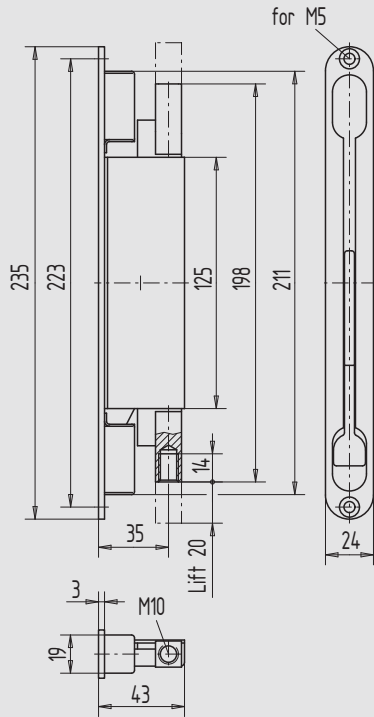
6

7

8

9

i



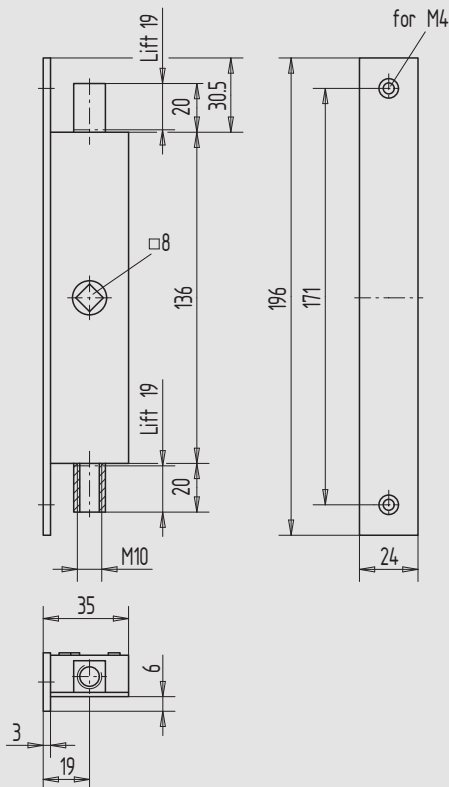
Flush bolt with front plate

- backset 35 mm
- stroke 20 mm
- steel zinc plated
- double-side acting
- with aluminium lever
- rod connectors M10
- rounded front plate
- front plate dimension 235 x 24 x 3 mm

Art.-no.	Front plate
07.342.0000.010	Steel, zinc-plated
07.342.0000.426	Stainless Steel V2A, matt brushed
Special	Flush bolt also with displaced backset available. (38/40/44/50/54/57/60/65 mm)

Accessories:

Round rod [page 427](#)
 Guiding-/floor bushes see [page 428](#)



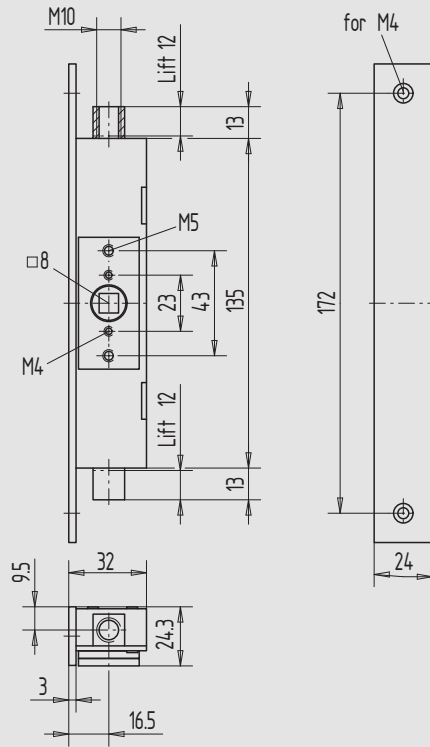
Flush bolt with front plate

- backset 19 mm
- stroke 19 mm
- steel zinc plated
- 8 mm square follower
- rod connectors M10

Art.-no.	Front plate
07.343.0000.010	Steel, zinc-plated
07.343.0000.426	Stainless Steel V2A, matt brushed

Accessories:

Round rod [page 427](#)
 Guiding-/floor bushes see [page 428](#)
 Socket key art.-no. 01.978.0000.625



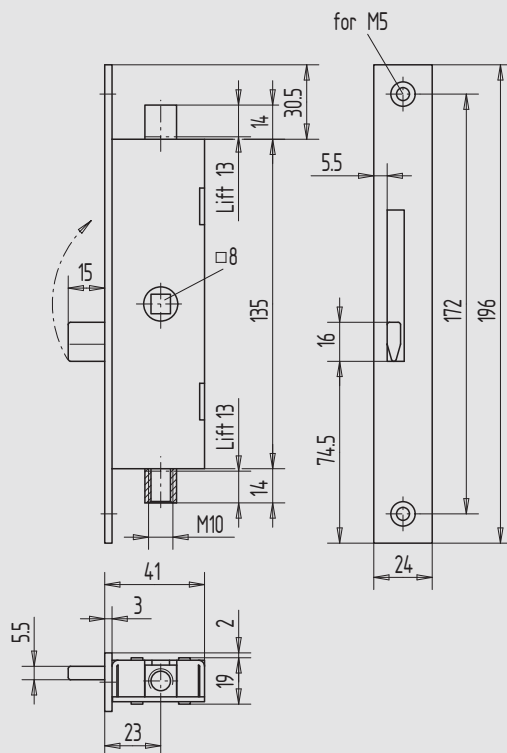
Flush bolt with front plate

- backset 16,5 mm
- stroke 12 mm
- base with thread M5
- steel zinc plated
- 8 mm square follower
- rod connectors M10

Art.-no.	Front plate
07.344.0000.010	Steel, zinc-plated
07.344.0000.426	Stainless Steel V2A, matt brushed

Accessories:

- Round rod [page 427](#)
- Guiding-/floor bushes see [page 428](#)
- Socket key art.-no. 01.978.0000.625



Flush bolt with front plate

- backset 23 mm
- stroke 13 mm
- with dead-point-position and brass guide
- 8 mm square follower
- rod connectors M10

Art.-no.	Material/Surface
07.345.0000.010	Steel, zinc-plated

Accessories:

- Round rod [page 427](#)
- Guiding-/floor bushes see [page 428](#)
- Socket key art.-no. 01.978.0000.625

1

2

3

4

5

6

7

8

9

i



1

2

3

4

5

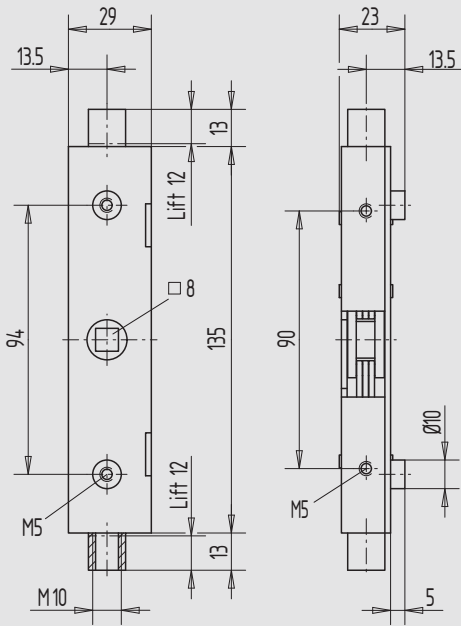
6

7

8

9

i



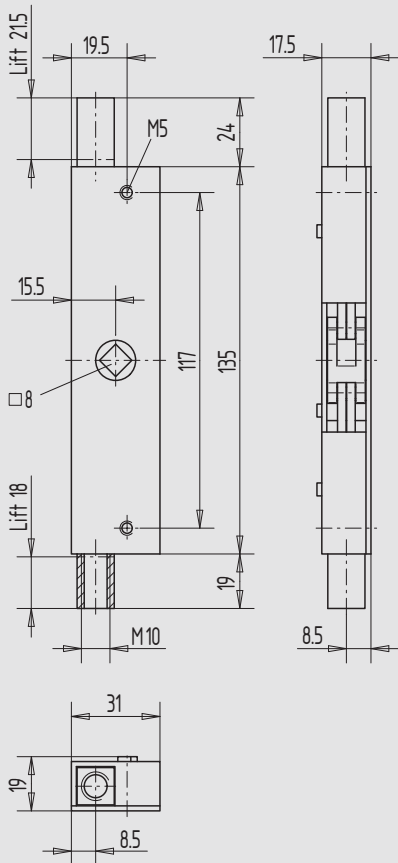
Flush bolt without front plate

- stroke 12 mm
- 8 mm square follower
- rod connectors M10
- thread M5 for fastening

Art.-no.	Material/Surface
07.360.0000.010	Steel, zinc-plated

Accessories:

- Round rod [page 427](#)
- Guiding-/floor bushes see [page 428](#)
- Socket key art.-no. 01.978.0000.625



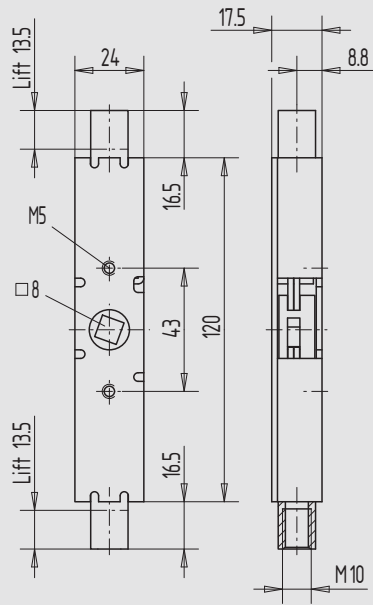
Flush bolt without front plate

- stroke 18/21,5 mm
- 8 mm square follower
- rod connectors M10
- thread M5 for fastening

Art.-no.	Material/Surface
07.361.0000.010	Steel, zinc-plated

Accessories:

- Round rod [page 427](#)
- Guiding-/floor bushes see [page 428](#)
- Socket key art.-no. 01.978.0000.625



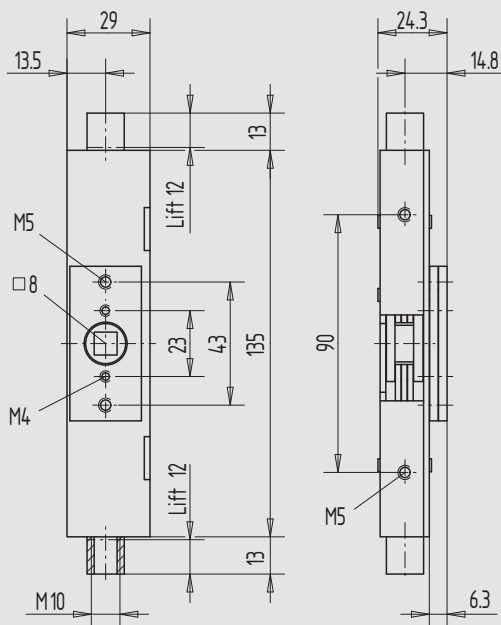
Flush bolt without front plate

- stroke 13,5 mm
- 8 mm square follower
- rod connectors M10
- thread M5 for fastening

Art.-no.	Material/Surface
07.362.0000.010	Steel, zinc-plated

Accessories:

Round rod [page 427](#)
Guiding-/floor bushes see [page 428](#)
Socket key art.-no. 01.978.0000.625



Flush bolt without front plate

- stroke 12 mm
- 8 mm square follower
- rod connectors M10
- thread M5 for fastening

Art.-no.	Material/Surface
07.363.0000.010	Steel, zinc-plated

Accessories:

Round rod [page 427](#)
Guiding-/floor bushes see [page 428](#)
Socket key art.-no. 01.978.0000.625

1

2

3

4

5

6

7

8

9

i



Gear box, lockable

- prepared for profile cylinder
- right and left hand usable
- bolt 9 mm diameter
- with weld-on plate

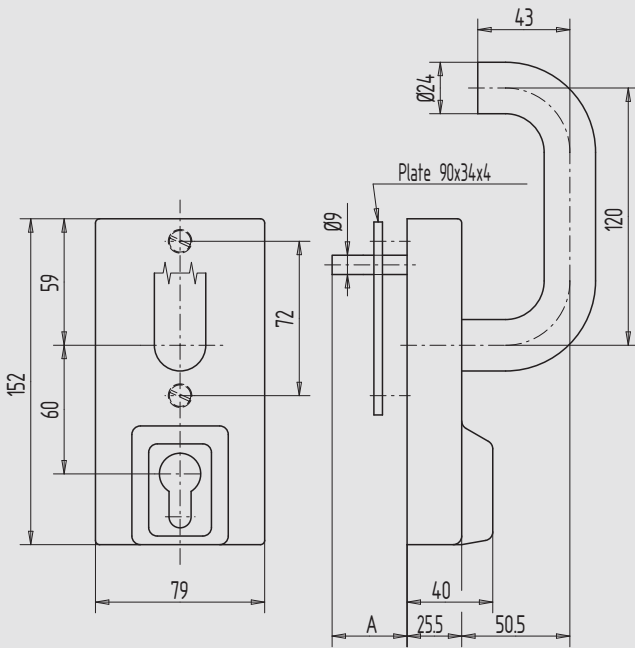
Art.-no.	Bolt length (A)
07.400.0035.---	35
07.400.0045.---	45
07.400.0050.---	50

Surface codes	Material/Surface
---.030	Steel, silver powder-coated
---.065	Steel, deep-black powder-coated
---.095	Steel, RAL powder-coated
---.112	Aluminium, E4/C-0 anodized
---.426	Stainless Steel V2A, matt brushed

Information The combination of lockable gear box with snap-in bolt is certified by MPA-NRW.

suitable for:

Snap-in bolt [page 442](#)



Gear box

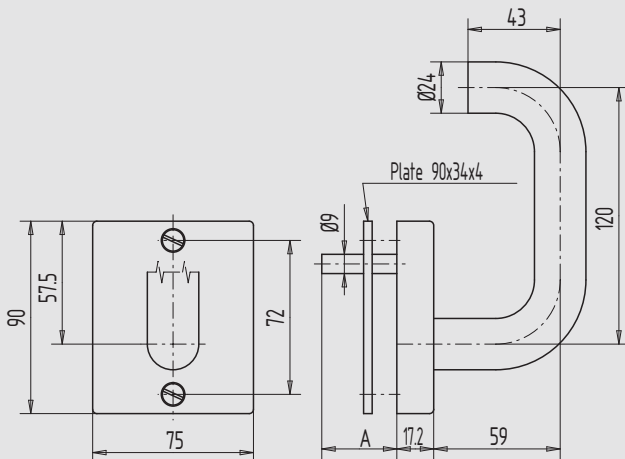
- right and left hand usable
- bolt 9 mm diameter
- with weld-on plate

Art.-no.	Bolt length (A)
07.401.0035.---	35
07.401.0045.---	45
07.401.0050.---	50

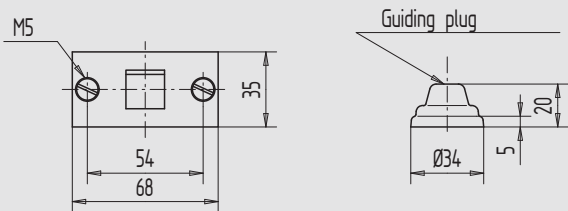
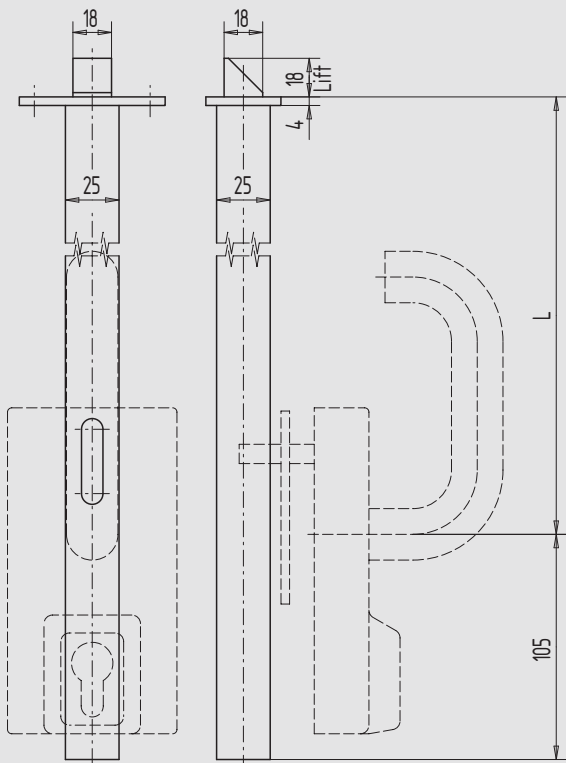
Surface codes	Material/Surface
---.030	Steel, silver powder-coated
---.065	Steel, deep-black powder-coated
---.095	Steel, RAL powder-coated
---.112	Aluminium, E4/C-0 anodized
---.426	Stainless Steel V2A, matt brushed

suitable for:

Snap-in bolt [page 442](#)



1
2
3
4
5
6
7
8
9
i



Latch bolt

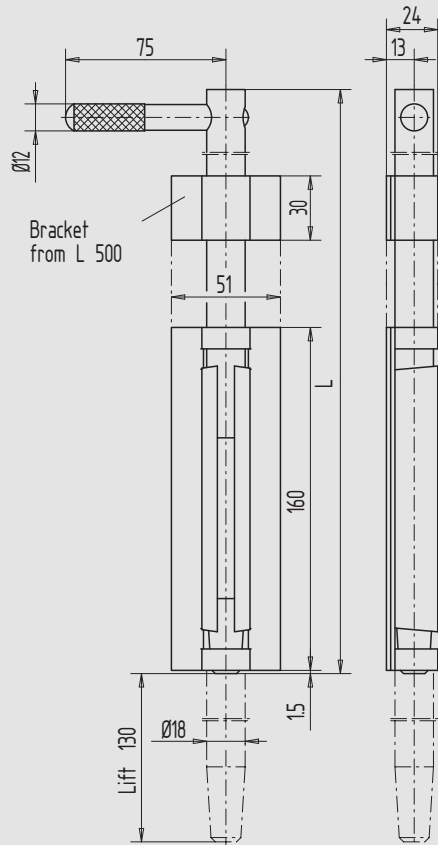


- right and left hand usable
- steel zinc plated
- normal length = 575 mm
- with guiding plug

Art.-no.	L
07.450.0575.010	575
07.450.0675.010	675
07.450.0700.010	700
07.450.0800.010	800
07.450.0825.010	825
07.450.0900.010	900
07.450.0950.010	950
07.450.1000.010	1000
07.450.1100.010	1100
07.450.1250.010	1250
07.450.1500.010	1500

Information The combination of lockable gear box with snap-in bolt is certified by MPA-NRW.

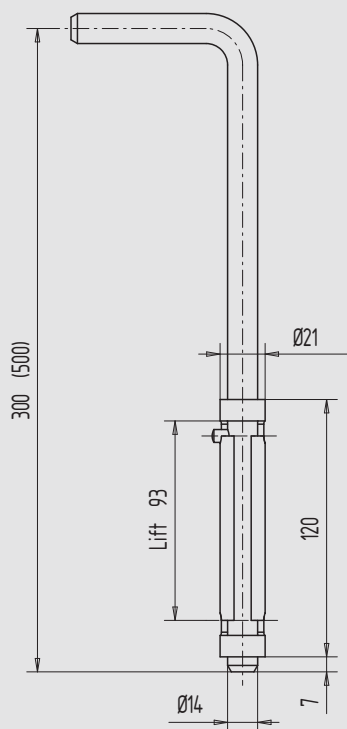
Special Snap-in bolt also in special length available.



Barrel bolt

- base plate to weld-on
- bolt 18 mm diameter
- stroke 130 mm
- right and left hand usable

Art.-no.	Length	Material/Surface
07.500.0030.010	300	Steel, zinc-plated
07.500.0040.010	400	Steel, zinc-plated
07.500.0040.405	400	Stainless Steel V2A, bright
07.500.0050.010	500	Steel, zinc-plated
07.500.0060.010	600	Steel, zinc-plated
07.500.0080.010	800	Steel, zinc-plated
07.500.0100.010	1000	Steel, zinc-plated



Barrel bolt

- bush to weld-on
- bolt 14 mm diameter
- stroke 93 mm
- right and left hand usable

Art.-no.	Length	Material/Surface
07.501.0030.010	300	Steel, zinc-plated
07.501.0050.010	500	Steel, zinc-plated

1

2

3

4

5

6

7

8

9

i



1

2

3

4

5

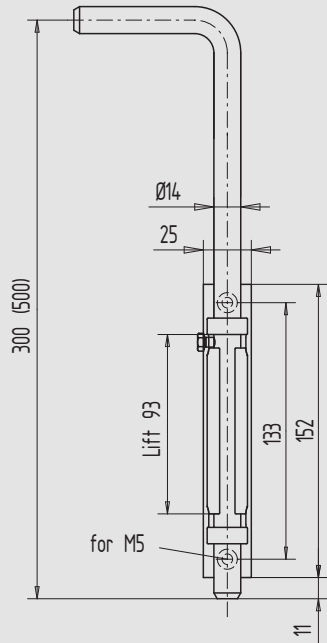
6

7

8

9

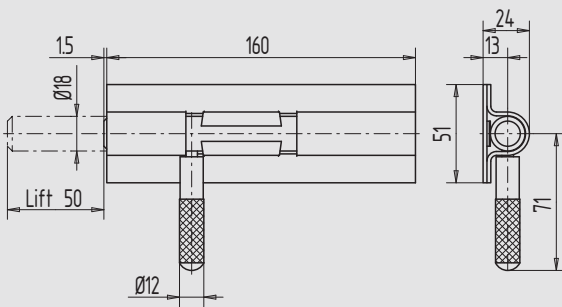
i



Barrel bolt

- base plate to screw-on
- bolt 14 mm diameter
- stroke 93 mm
- right and left hand usable

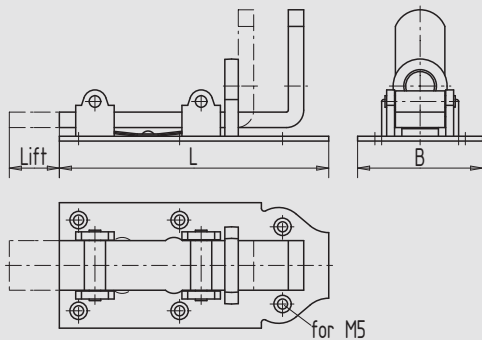
Art.-no.	Length	Material/Surface
07.502.0030.010	300	Steel, zinc-plated
07.502.0050.010	500	Steel, zinc-plated



Barrel bolt

- bolt 18 mm diameter
- stroke 50 mm
- right and left hand usable

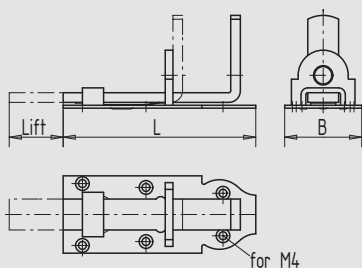
Art.-no.	Lift	Material/Surface
07.503.0000.010	50	Steel, zinc-plated



Roller bolt

- handle slider with hole for pad lock
- steel zinc plated

Art.-no.	L	B	Lift	Material/Surface
07.550.0160.010	160	70	36	Steel, zinc-plated
07.550.0180.010	180	78	46	Steel, zinc-plated
07.550.0200.010	200	78	46	Steel, zinc-plated
07.550.0250.010	250	78	68	Steel, zinc-plated



Locking bolt , stainless steel

- handle slider with hole for pad lock
- stainless steel V2A matt brushed

Art.-no.	L	B	Lift	Material/Surface
07.551.0100.405	100	40	28	Stainless Steel V2A, bright
07.551.0120.405	120	45	33	Stainless Steel V2A, bright
07.551.0140.405	140	52	41	Stainless Steel V2A, bright



Lever handle

- lever, one-sided
- round rose to screw-on

straight guide

Art.-no.	Direction	Material/Surface
07.600.0000.010	right	Steel, zinc-plated
07.600.0000.416	right	Stainless Steel V2A, polished
07.601.0000.010	left	Steel, zinc-plated
07.601.0000.416	left	Stainless Steel V2A, polished

cropped guide

Art.-no.	Direction	Material/Surface
07.602.0000.010	right	Steel, zinc-plated
07.603.0000.010	left	Steel, zinc-plated

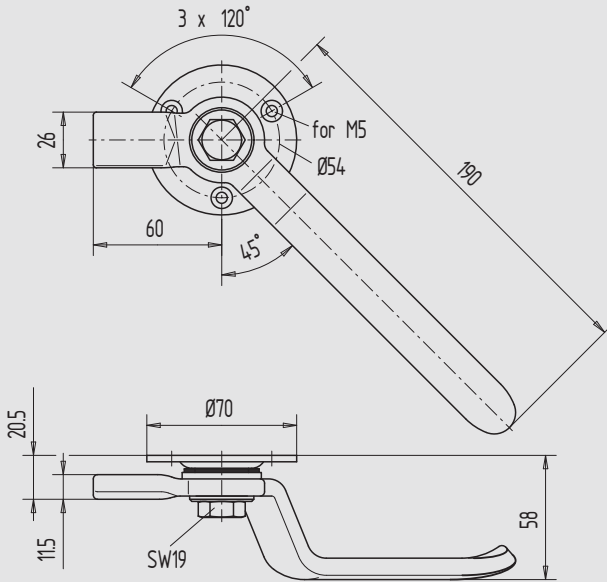


Illustration shows left lever handle

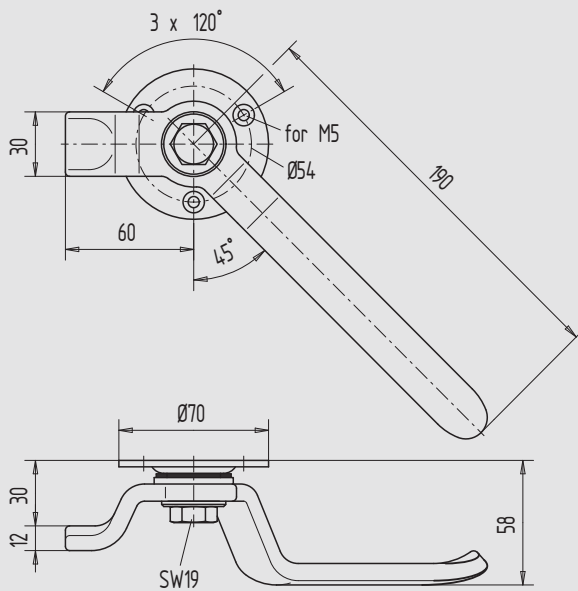


Illustration shows left lever handle

1

2

3

4

5

6

7

8

9

i

1
2
3
4
5
6
7
8
9
i

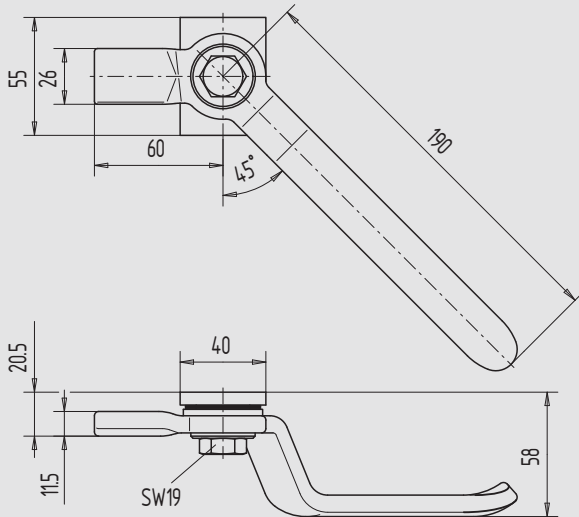


Illustration shows left lever handle

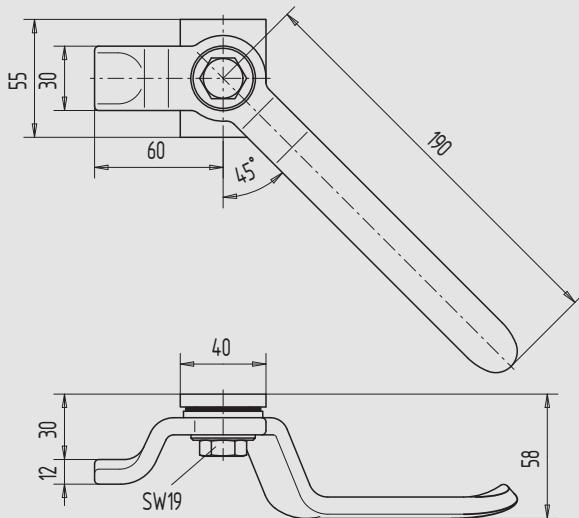


Illustration shows left lever handle

Lever handle

- lever, one-sided
- rectangular rose to weld-on

straight guide

Art.-no.	Direction	Material/Surface
07.604.0000.005	right	Steel, bright
07.605.0000.005	left	Steel, bright

cropped guide

Art.-no.	Direction	Material/Surface
07.606.0000.005	right	Steel, bright
07.607.0000.005	left	Steel, bright

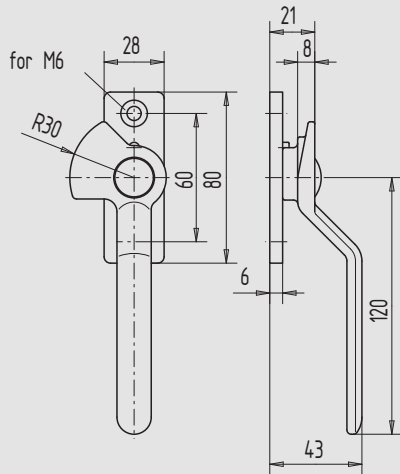


Illustration shows left lever handle

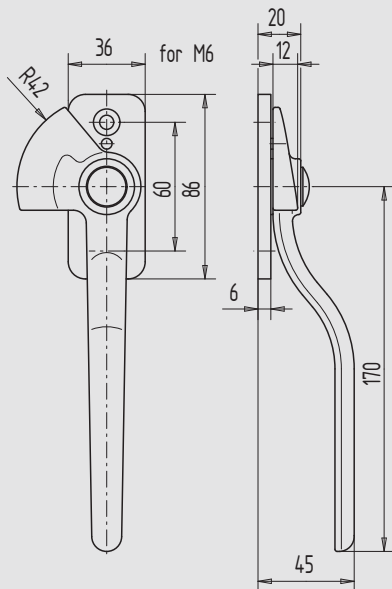


Illustration shows left lever handle

Lever handle

- lever, one-sided, 120 mm long
- rectangular rose to screw-on
- steel or brass

Art.-no.	Direction	Material/Surface
07.608.0000.610	right	Malleable Cast Iron, zinc-plated
07.609.0000.610	left	Malleable Cast Iron, zinc-plated

Lever handle

- lever, one-sided, 170 mm long
- rectangular rose to screw-on
- malleable cast iron or brass

Art.-no.	Direction	Material/Surface
07.610.0000.610	right	Malleable Cast Iron, zinc-plated
07.611.0000.610	left	Malleable Cast Iron, zinc-plated

1

2

3

4

5

6

7

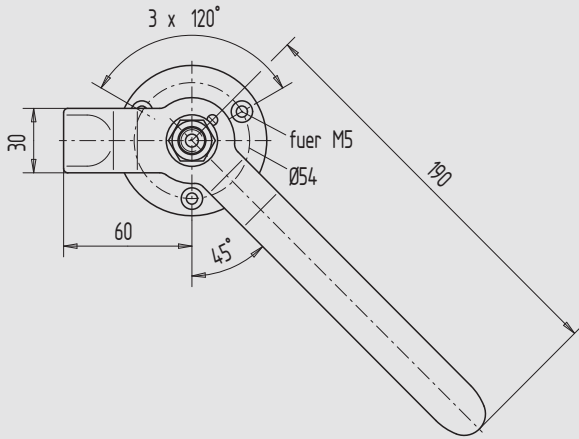
8

9

i

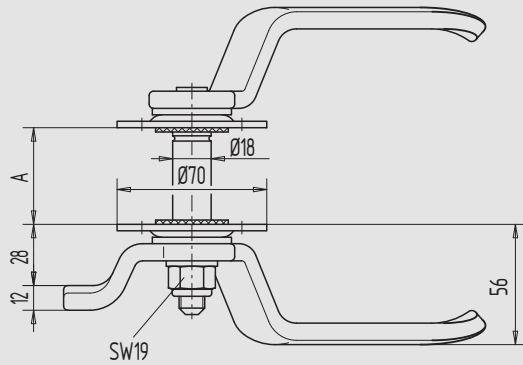


1



2

3



4

5

Illustration shows left lever handle

6

7

8

9

i

Lever handle

- cropped guide
- double-sided lever
- round roses to screw-on
- steel or stainless steel
- with security screw-nut and sealing-rings

Art.-no.	Direction	A (Door thickness)
07.620.0020.---	right	20
07.621.0020.---	left	20
07.620.0025.---	right	25
07.621.0025.---	left	25
07.620.0030.---	right	30
07.621.0030.---	left	30
07.620.0035.---	right	35
07.621.0035.---	left	35
07.620.0040.---	right	40
07.621.0040.---	left	40
07.620.0045.---	right	45
07.621.0045.---	left	45
07.620.0050.---	right	50
07.621.0050.---	left	50
07.620.0055.---	right	55
07.621.0055.---	left	55
07.620.0063.---	right	63
07.621.0063.---	left	63
07.620.0090.---	right	
07.621.0090.---	left	

Surface codes	Material/Surface
---.010	Steel, zinc-plated
---.416	Stainless Steel V2A, polished

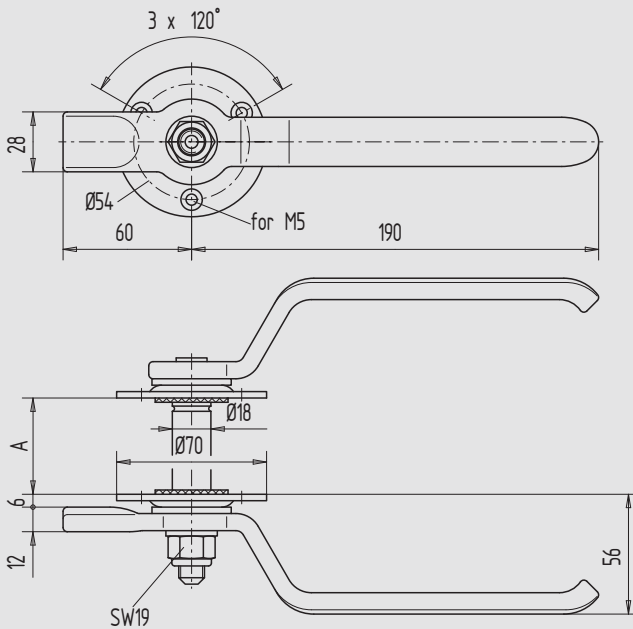


Lever handle

- lever, double-sided
- round roses to screw-on
- with security screw-nut and seal-ring
- right and left usable

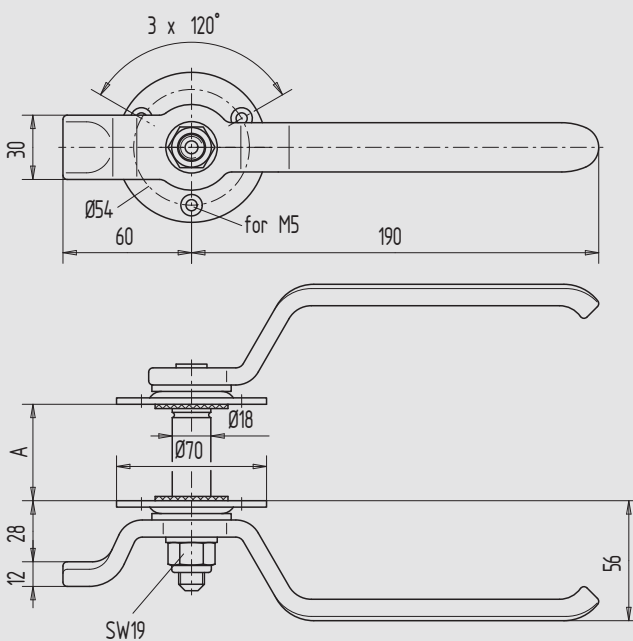
straight guide

Art.-no.	A (Door thickness)	Material/Surface
07.622.0040.010	40	Steel, zinc-plated



cropped guide

Art.-no.	A (Door thickness)	Material/Surface
07.623.0020.010	20	Steel, zinc-plated
07.623.0025.010	25	Steel, zinc-plated
07.623.0030.010	30	Steel, zinc-plated
07.623.0035.010	35	Steel, zinc-plated
07.623.0040.010	40	Steel, zinc-plated
07.623.0045.010	45	Steel, zinc-plated
07.623.0050.010	50	Steel, zinc-plated
07.623.0055.010	55	Steel, zinc-plated
07.623.0063.010	63	Steel, zinc-plated



1

2

3

4

5

6

7

8

9

i



1

2

3

4

5

6

7

8

9

i

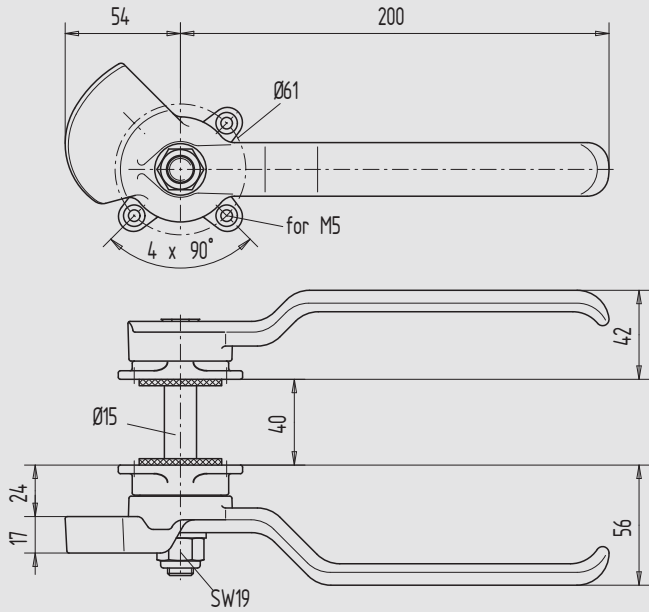


Illustration shows left lever handle

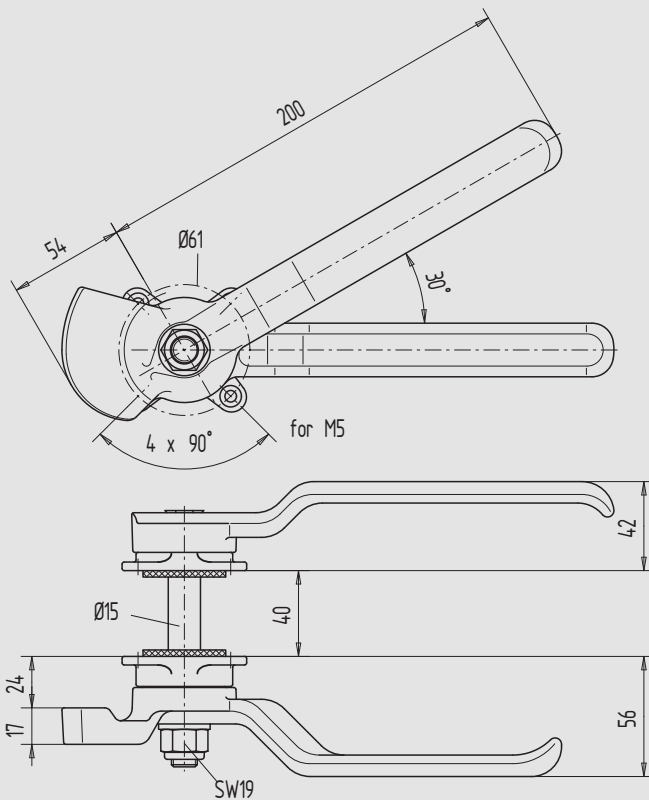


Illustration shows left lever handle

Lever handle

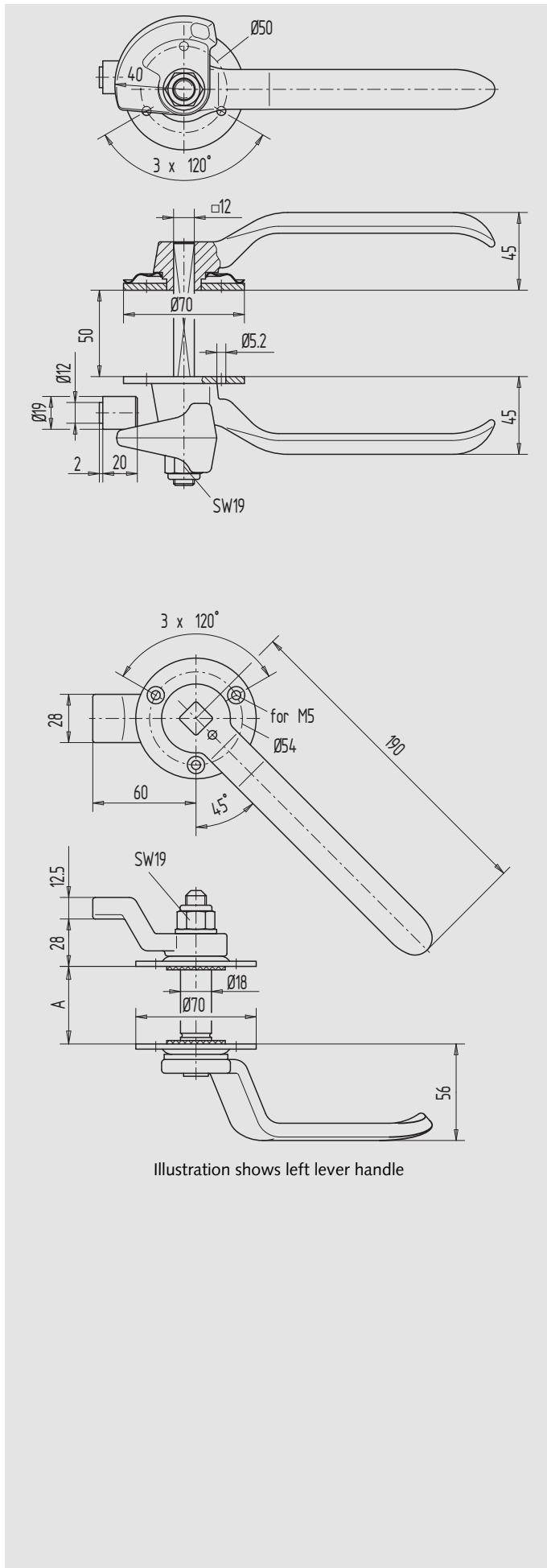
- lever, double-sided
- to screw-on
- with security screw-nut and seal-ring
- Door thickness 40 mm

Horizontal lever

Art.-no.	Direction	Material/Surface
07.624.0040.610	right	Malleable Cast Iron, zinc-plated
07.625.0040.610	left	Malleable Cast Iron, zinc-plated

lever 30°, beveled

Art.-no.	Direction	Material/Surface
07.626.0040.610	right	Malleable Cast Iron, zinc-plated
07.627.0040.610	left	Malleable Cast Iron, zinc-plated



Lever handle

- double-sided lever
- round roses to screw-on
- inside: with conic locking shim
- outside: with cover rose
- door thickness 50 mm

Art.-no.	Material/Surface
07.628.0050.610	Malleable Cast Iron, zinc-plated

Lever handle

- with lever on the one side
- with cropped guide on the other side
- round roses to screw-on
- with security screw-nut and sealing rings

Art.-no.	Direction	Door thickness (A)	Material/Surface
07.630.0020.010	right	20	Steel, zinc-plated
07.631.0020.010	left	20	Steel, zinc-plated
07.630.0025.010	right	25	Steel, zinc-plated
07.631.0025.010	left	25	Steel, zinc-plated
07.630.0030.010	right	30	Steel, zinc-plated
07.631.0030.010	left	30	Steel, zinc-plated
07.630.0035.010	right	35	Steel, zinc-plated
07.631.0035.010	left	35	Steel, zinc-plated
07.630.0040.010	right	40	Steel, zinc-plated
07.631.0040.010	left	40	Steel, zinc-plated
07.630.0045.010	right	45	Steel, zinc-plated
07.631.0045.010	left	45	Steel, zinc-plated
07.630.0050.010	right	50	Steel, zinc-plated
07.631.0050.010	left	50	Steel, zinc-plated
07.630.0055.010	right	55	Steel, zinc-plated
07.631.0055.010	left	55	Steel, zinc-plated
07.630.0063.010	right	63	Steel, zinc-plated
07.631.0063.010	left	63	Steel, zinc-plated

Illustration shows left lever handle



1

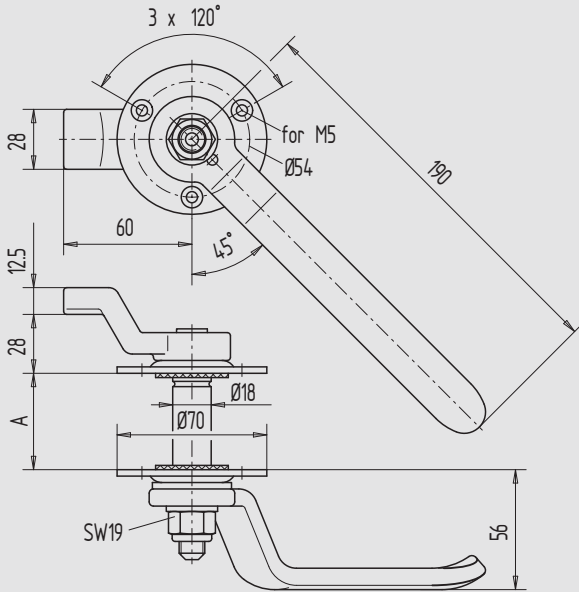


Illustration shows left lever handle

2

3

4

5

6

7

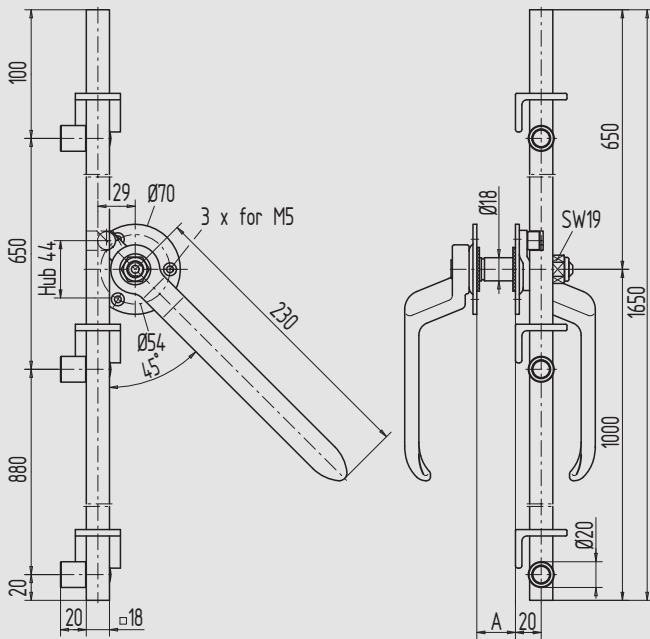


Illustration shows left lever handle

8

9

i

Lever handle

- with lever on the one side
- with cropped guide on the other side
- round roses to screw-on
- with security screw-nut and sealing rings

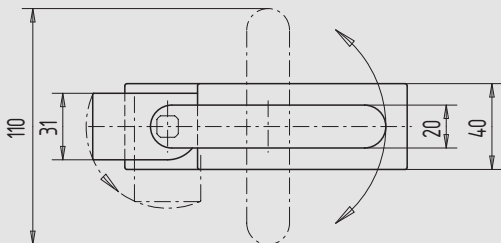
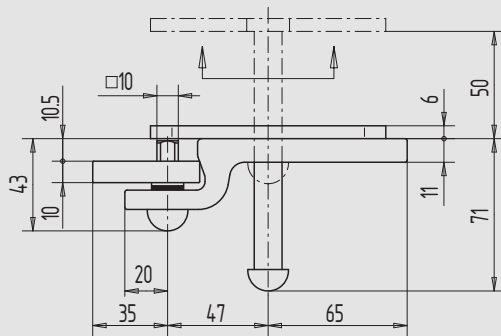
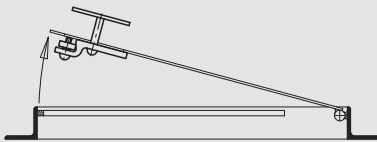
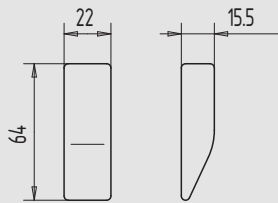
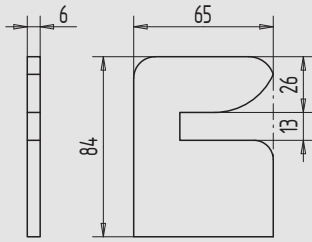
Art.-no.	Direction	Door thickness (A)	Material/Surface
07.632.0045.010	right	45	Steel, zinc-plated
07.633.0045.010	left	45	Steel, zinc-plated

Information Lever handles also for other door thicknesses available. (please specify the quantity)

Lever locking device

- triply locking
- actuation from inside and outside
- with square rod 18 x 18 mm, 1650 mm long
- brass roller pin, 20 mm diameter
- with rod guides

Art.-no.	Direction	Maß A (Door thickness)	Material/Surface
07.634.0020.010	right	20	Steel, zinc-plated
07.635.0020.010	left	20	Steel, zinc-plated
07.634.0025.010	right	25	Steel, zinc-plated
07.635.0025.010	left	25	Steel, zinc-plated
07.634.0030.010	right	30	Steel, zinc-plated
07.635.0030.010	left	30	Steel, zinc-plated
07.634.0035.010	right	35	Steel, zinc-plated
07.635.0035.010	left	35	Steel, zinc-plated
07.634.0040.010	right	40	Steel, zinc-plated
07.635.0040.010	left	40	Steel, zinc-plated
07.634.0045.010	right	45	Steel, zinc-plated
07.635.0045.010	left	45	Steel, zinc-plated
07.634.0050.010	right	50	Steel, zinc-plated
07.635.0050.010	left	50	Steel, zinc-plated
07.634.0063.010	right	63	Steel, zinc-plated
07.635.0063.010	left	63	Steel, zinc-plated



Strike plate

- for lever handles
- to weld-on
- steel or stainless steel

Art.-no.	Material/Surface
07.680.0000.005	Steel, bright
07.680.0000.010	Steel, zinc-plated
07.680.0000.416	Stainless Steel V2A, polished

Shim-piece

- for lever handles
- to weld-on
- drop-forged

Art.-no.	Material/Surface
07.681.0000.005	Steel, bright
07.681.0000.010	Steel, zinc-plated

Locking device for chute cover

- actuation by 10 mm square arbor key

Art.-no.	Material/Surface
07.682.0000.610	Malleable Cast Iron, zinc-plated

Function	
	At locked position, the T-form malleable cast iron lever lays in the cut-out of the flap. Thereby it can be entered or driven riskless.
	The lever must be lifted and turned about 90° to open the flap. Thereby the sash fastener becomes accessible and can be opened by a 10 mm square arbor key.

1

2

3

4

5

6

7

8

9

i

1

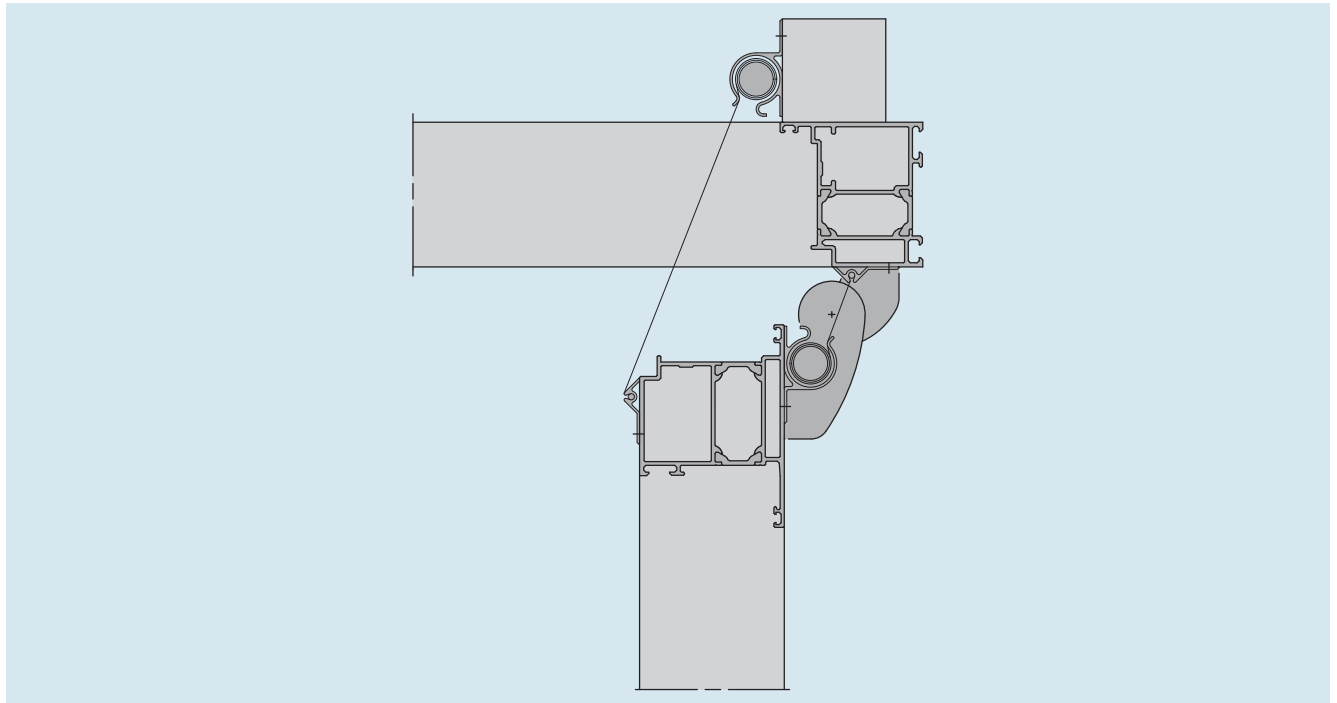
Finger protection rollo-system and profile

2

3

4

5



6

As effective protection against clamping the fingers between the door and the frame, WSS provides the rollo-system and the protection profiles. These components are often used in buildings like kindergartens, schools, hospitals and so on.

The rollo-system covers the door slit while opening automatically. Therefore, the rollo-case must be installed to the door frame. The black rollo covers the slit reliably.

7

8

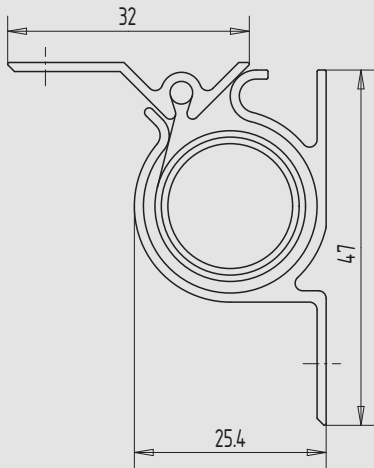
9

i

When the door is closed, the rollo-system is invisible and protected. It is not suitable for outside doors.

Different versions (form, size) can be chosen.

When use of door hinges with large distance of center of rotation (see illustration), the rollo system can be used for finger protection on the hinge-side instead of a protection profile.



Finger protection system

- protection against clamping the fingers between leaf and frame (hinge-side)
- black curtain covers the door crack when the door is open
- installation on hinge opposite side
- standard length 1925 mm, not cuttable
- minimum length 290 mm
- aluminium case

Art.-no.	Length	Material/Surface
07.900.1925.105	1925	Aluminium, bright
07.900.1925.112	1925	Aluminium, E4/C-0 anodized
07.900.1925.152	1925	Aluminium, E4/C-34 anodized
07.900.1925.250	1925	Aluminium, RAL 9010 powder-coated

Special	Protection profiles also with fixed length from 290 mm up to 1924 mm available.
----------------	---

Finger protection profiles

- hinge-sided protection profile against clamping the fingers in the door crack on hinge-side
- standard length 1355 mm
- minimum length 290 mm
- customer-defined shortenable

Profile I

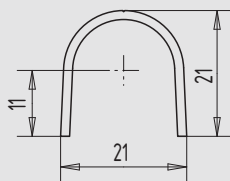
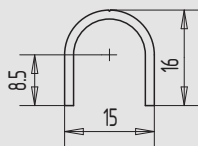
- hinge-diameter 16 mm

Art.-no.	Length	Material/Surface
07.950.1355.105	1355	Aluminium, bright
07.950.1355.112	1355	Aluminium, E4/C-0 anodized
07.950.1355.152	1355	Aluminium, E4/C-34 anodized
07.950.1355.250	1355	Aluminium, RAL 9010 powder-coated

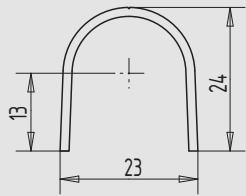
Profile II

- hinge-diameter 20 mm

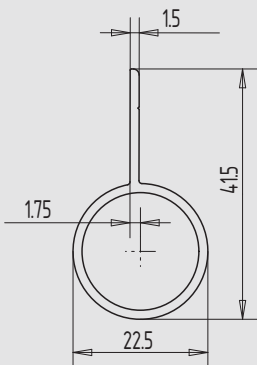
Art.-no.	Length	Material/Surface
07.951.1355.105	1355	Aluminium, bright
07.951.1355.112	1355	Aluminium, E4/C-0 anodized
07.951.1355.152	1355	Aluminium, E4/C-34 anodized
07.951.1355.250	1355	Aluminium, RAL 9010 powder-coated



1



2



3

4

5

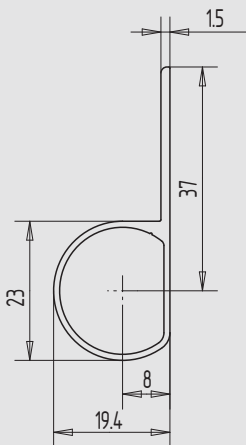
6

7

8

9

i



Profile III

- hinge-diameter 22 mm

Art.-no.	Length	Material/Surface
07.952.1355.105	1355	Aluminium, bright
07.952.1355.112	1355	Aluminium, E4/C-0 anodized
07.952.1355.152	1355	Aluminium, E4/C-34 anodized
07.952.1355.250	1355	Aluminium, RAL 9010 powder-coated

Profile V

- blunt doors

Art.-no.	Length	Material/Surface
07.953.1355.105	1355	Aluminium, bright
07.953.1355.112	1355	Aluminium, E4/C-0 anodized
07.953.1355.152	1355	Aluminium, E4/C-34 anodized
07.953.1355.250	1355	Aluminium, RAL 9010 powder-coated

Profile VI

- blunt doors

Art.-no.	Length	Material/Surface
07.954.1355.105	1355	Aluminium, bright
07.954.1355.112	1355	Aluminium, E4/C-0 anodized
07.954.1355.152	1355	Aluminium, E4/C-34 anodized
07.954.1355.250	1355	Aluminium, RAL 9010 powder-coated

Special Protection profiles also with fixed length from 290 mm up to 3000 mm available.